



# Infrastructure Investment and Jobs Act

What it means for Florida and Tampa Bay

Leadership Tampa Bay

JANUARY 2022





**NATIONAL FIRM**  
**LOCAL PRESENCE**

**CORPORATE**  
561.687.2220

**ARLINGTON**  
571.438.9440

**AUSTIN**  
512.669.5560

**CHARLOTTE**  
704.716.8000

**CHICAGO**  
630.307.3800

**DALLAS**  
214.307.4767

**DENVER**  
720.398.6060

**FT. LAUDERDALE**  
954.660.1660

**GAINESVILLE**  
352.565.6850

**HOUSTON**  
832.730.1901

**INDIANAPOLIS**  
317.735.3349

**JACKSONVILLE**  
904.470.4503

**KALAMAZOO**  
269.381.2222

**MIAMI**  
305.553.0500

**ORLANDO**  
407.581.1221

**PORT ST. LUCIE**  
772.408.5258

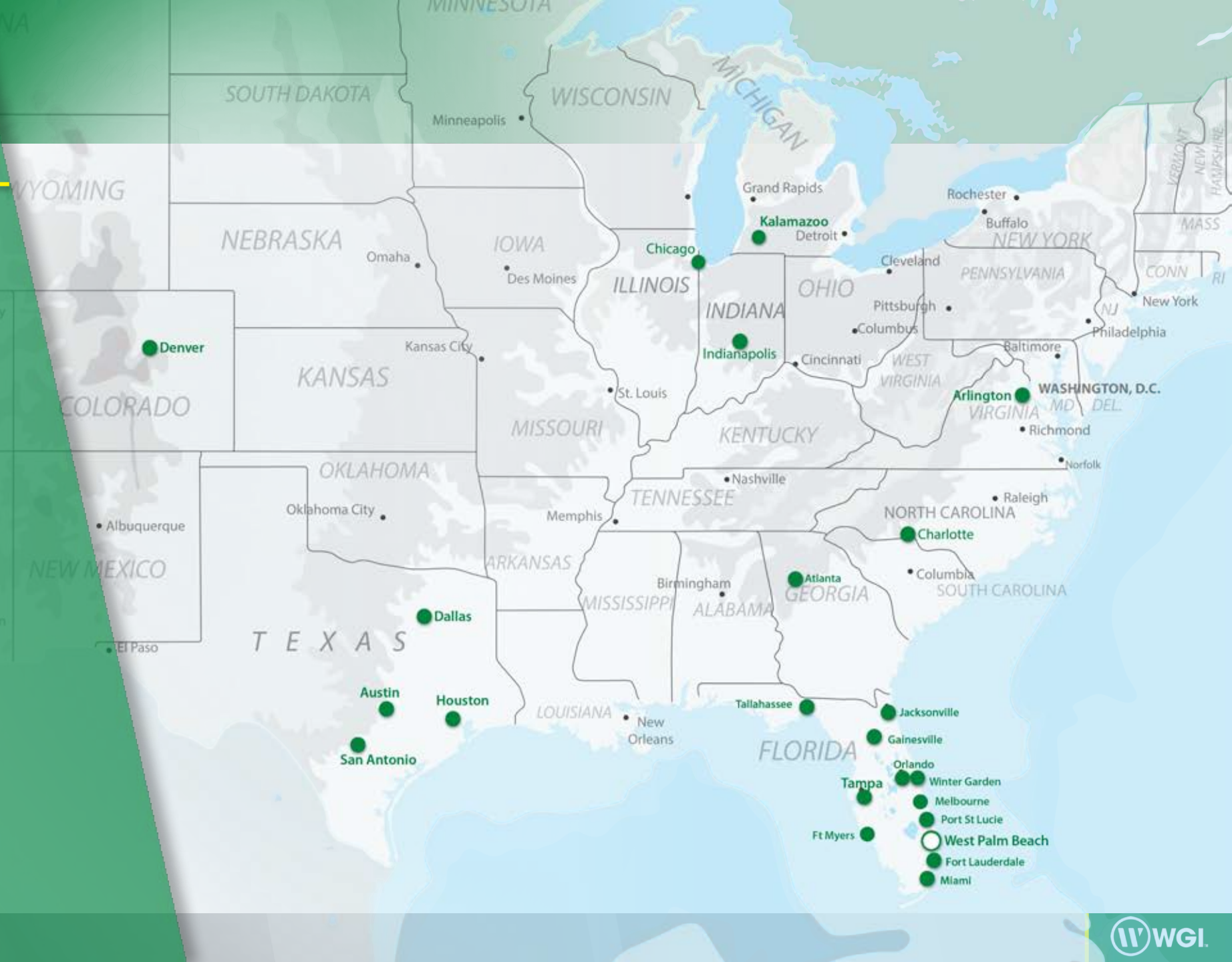
**SAN ANTONIO**  
210.860.9224

**TALLAHASSEE**  
850.210.0101

**TAMPA**  
813.574.3190

**WINTER GARDEN**  
407.581.1221

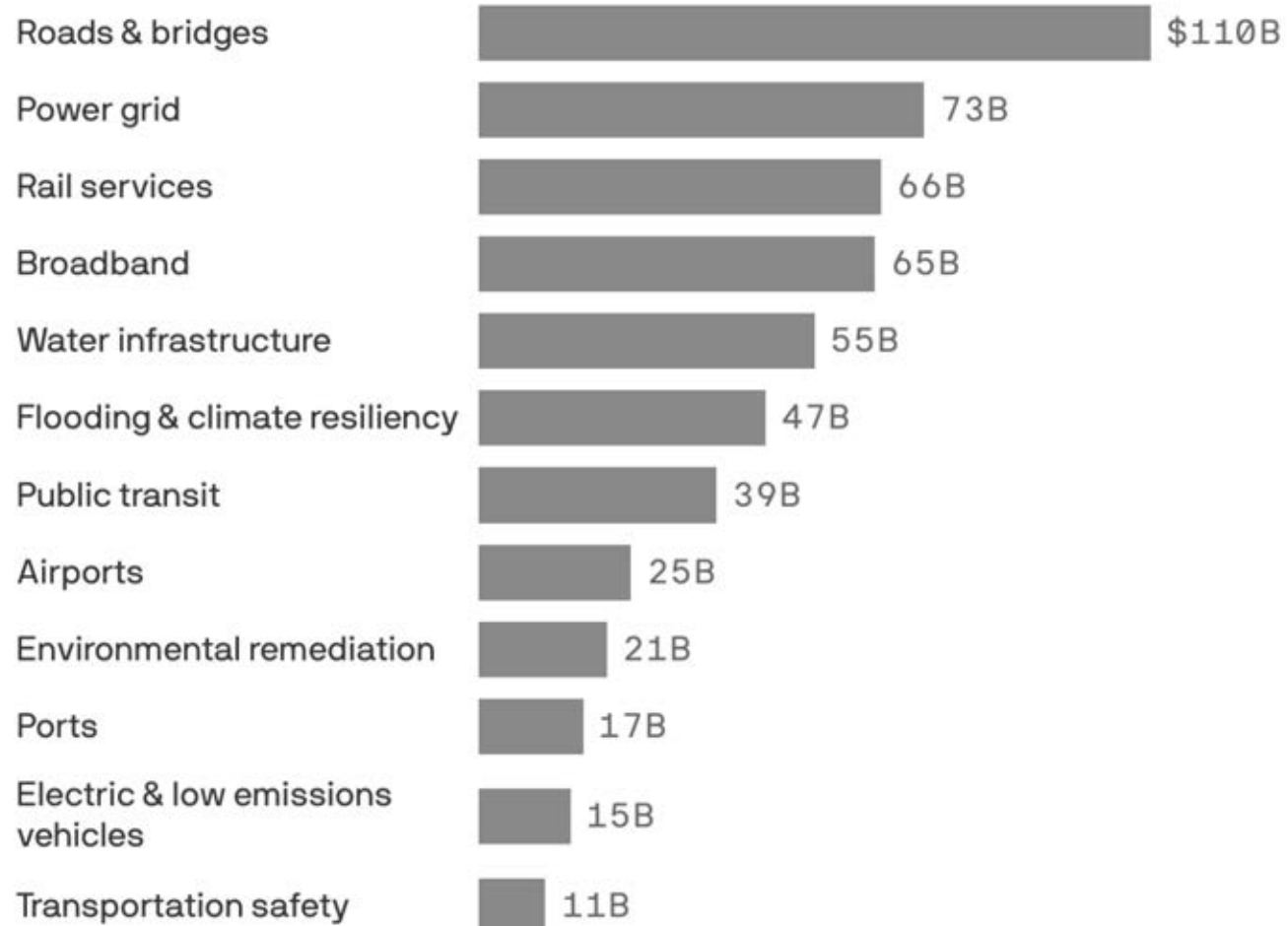
*Coming soon –  
Raleigh, NC*





# Big Picture- Infrastructure Investment and Jobs Act

\$550B of one-time new spending + \$500B reauthorization of 5-year surface transportation bill



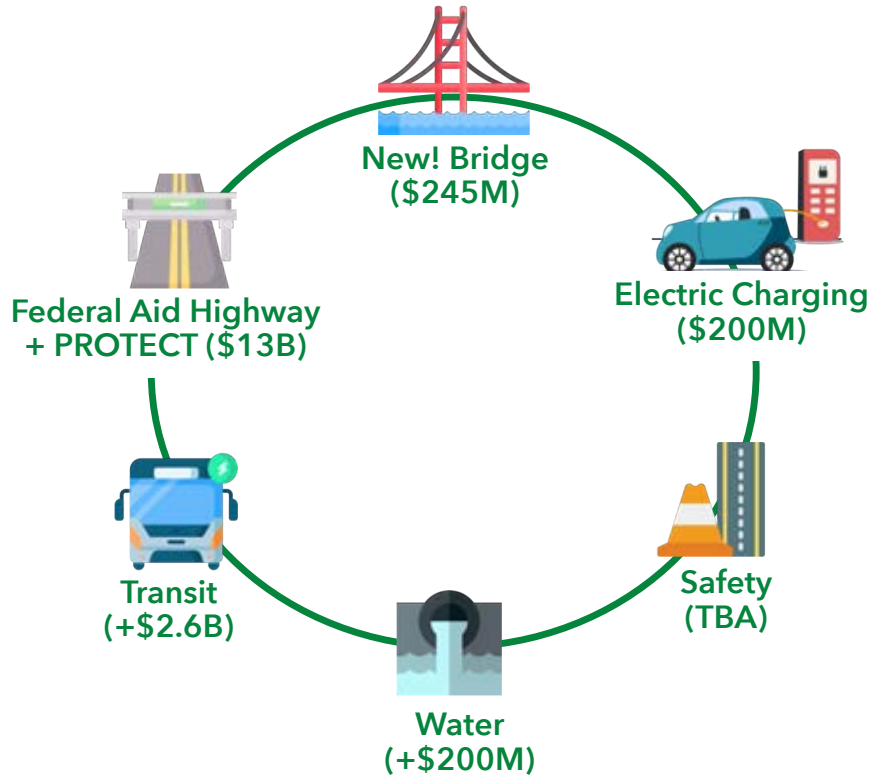




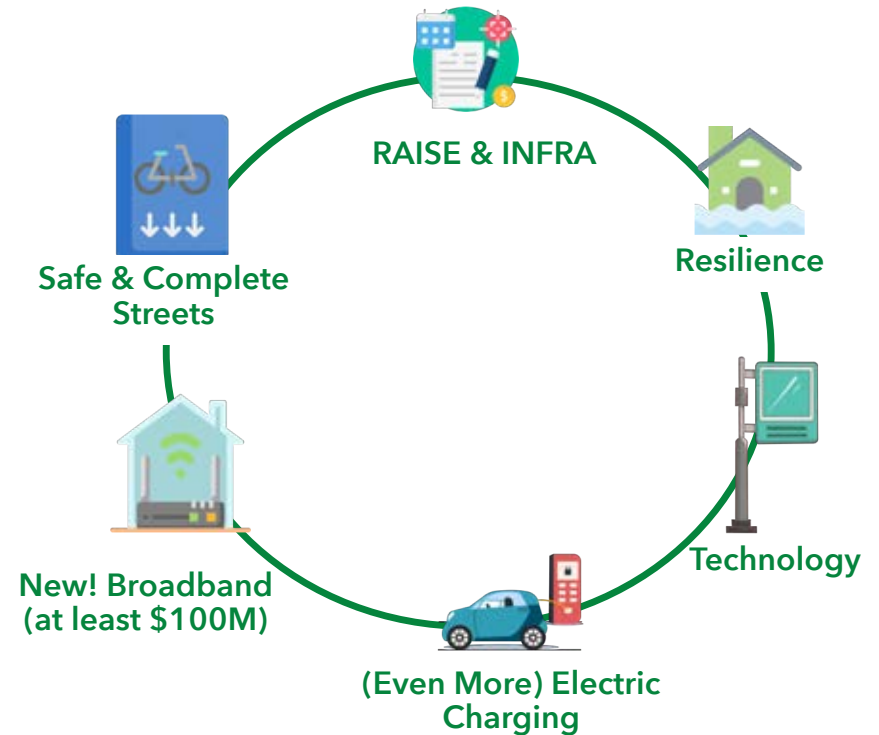
# Infrastructure Funds – Snapshot Florida

Overall - \$16.7B over next 5 years

## Formula Funds - \$13.5B



## USDOT Discretionary Funds >\$3B





# RAISE 2021!

**Jacksonville**

Ultimate Urban Circulator

**Tampa Heights**

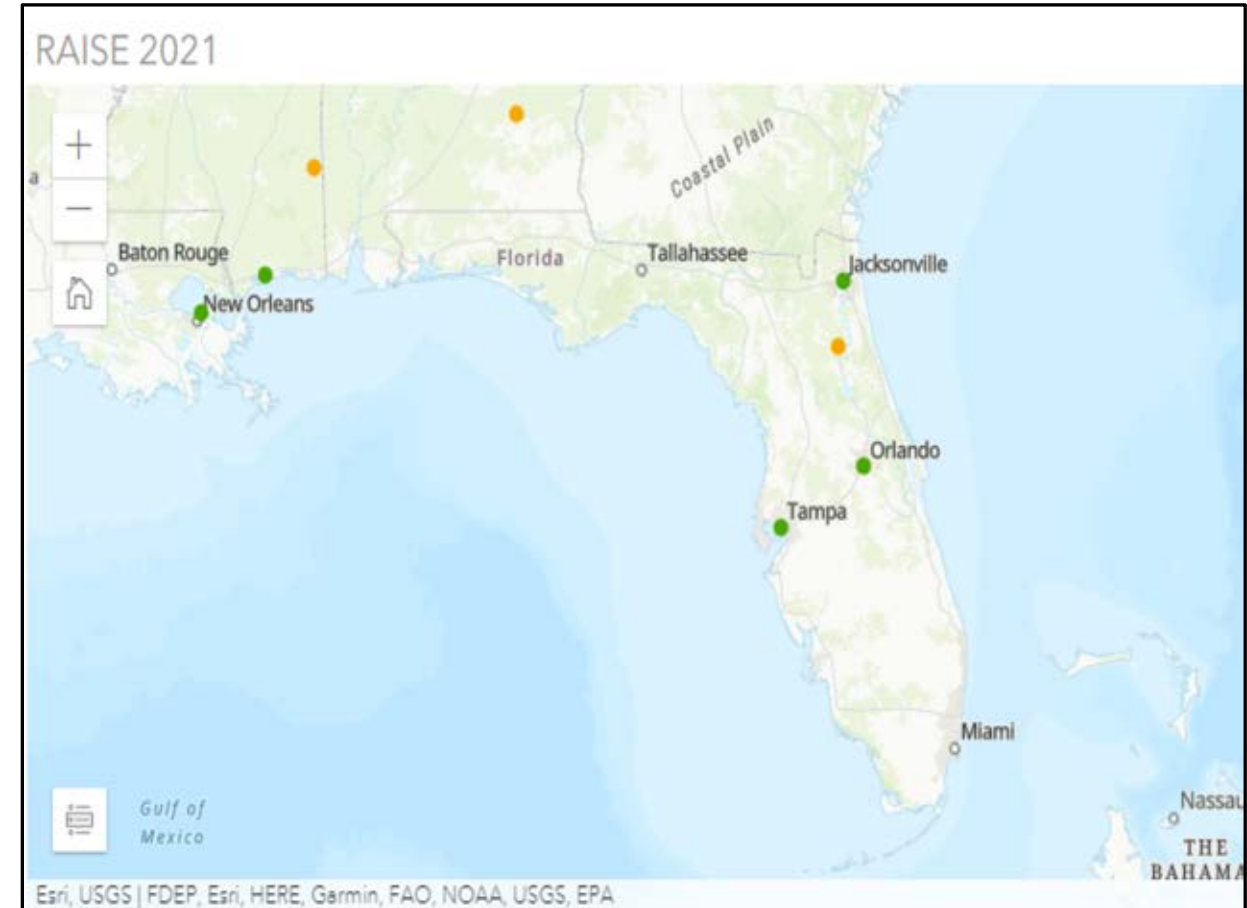
Dedicated Transitway

**Palatka**

Amtrack station improvements

**Orlando**

Vision Zero Plan

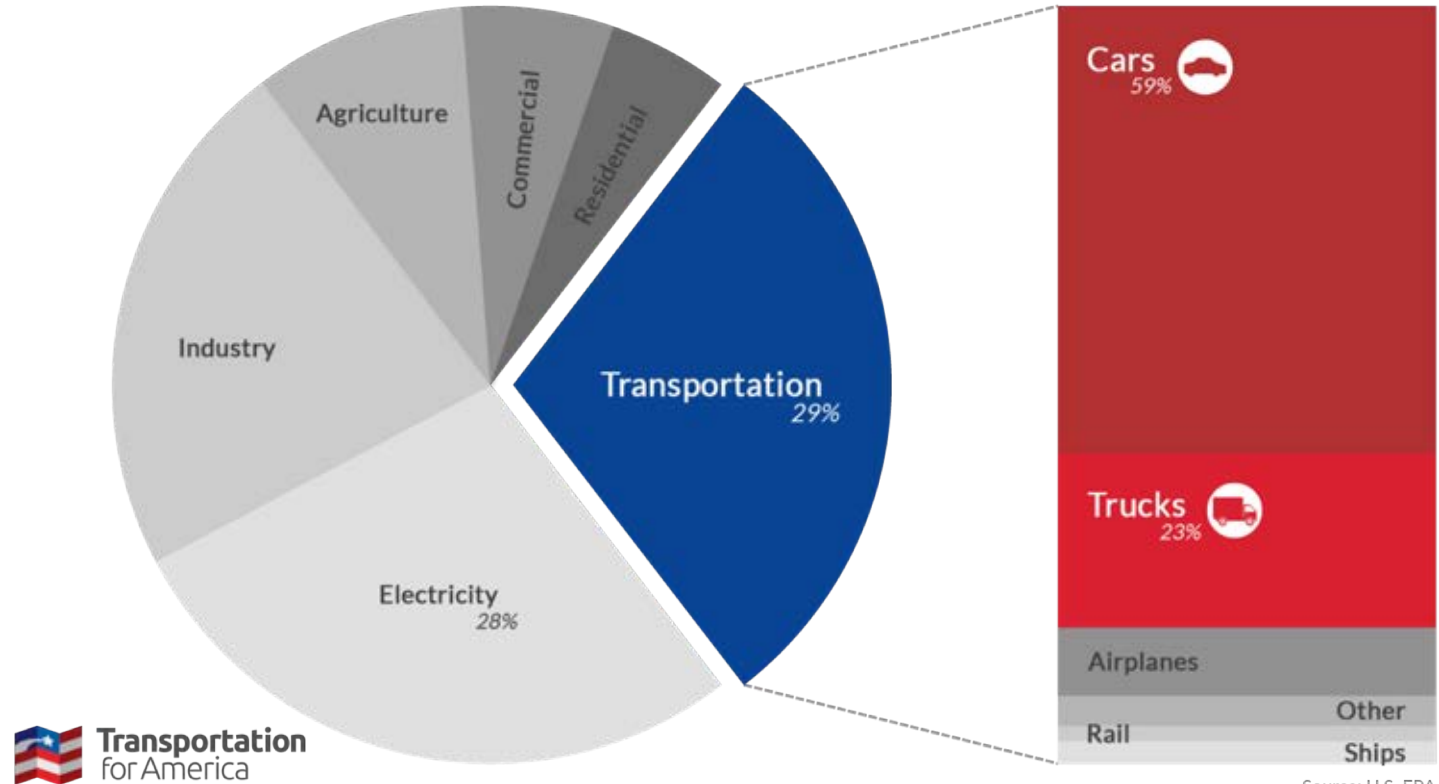




# Transformation in IJA

## U.S. Carbon Emissions, 2017

Transportation  
highest-ranking  
contributor

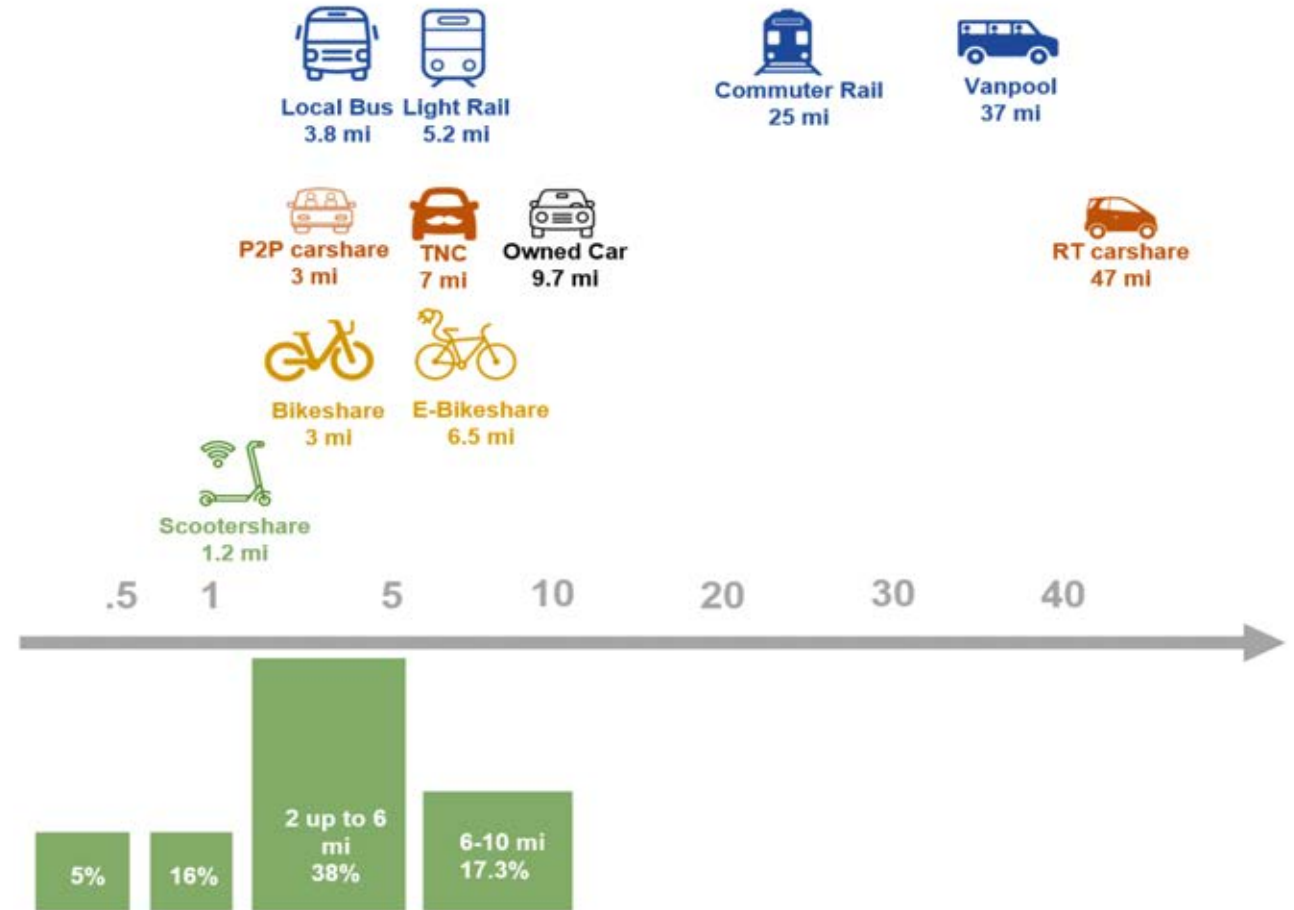




# Why is Transformation Needed?

Almost 60% of all trips < 6 miles

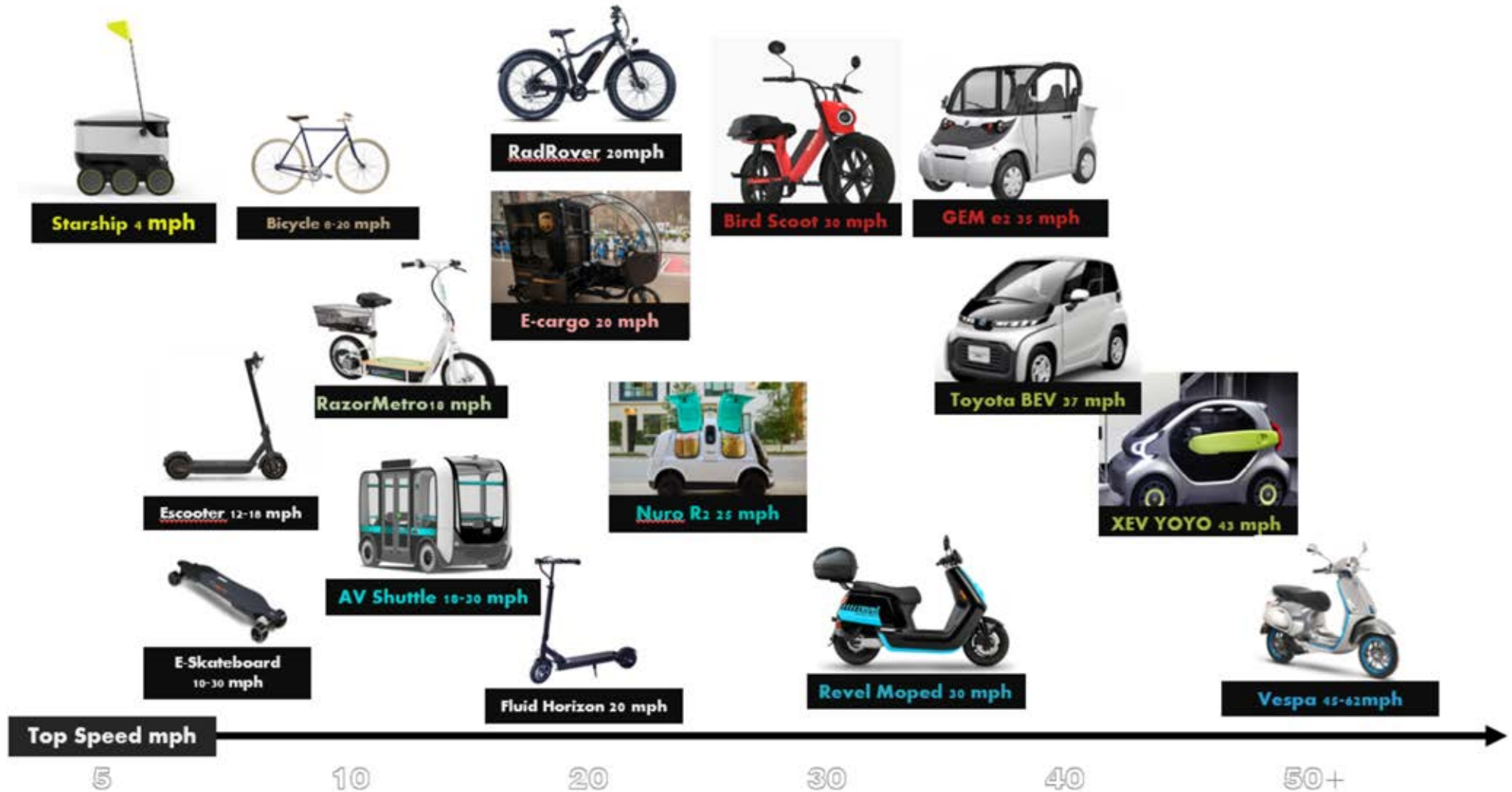
35% of all **car** trips are < 2 miles



i, APTA 2019 Fact Book



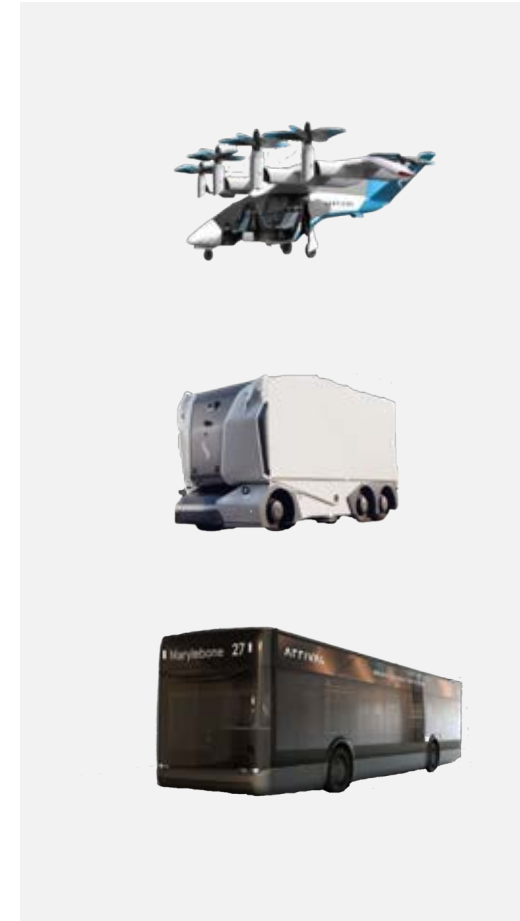
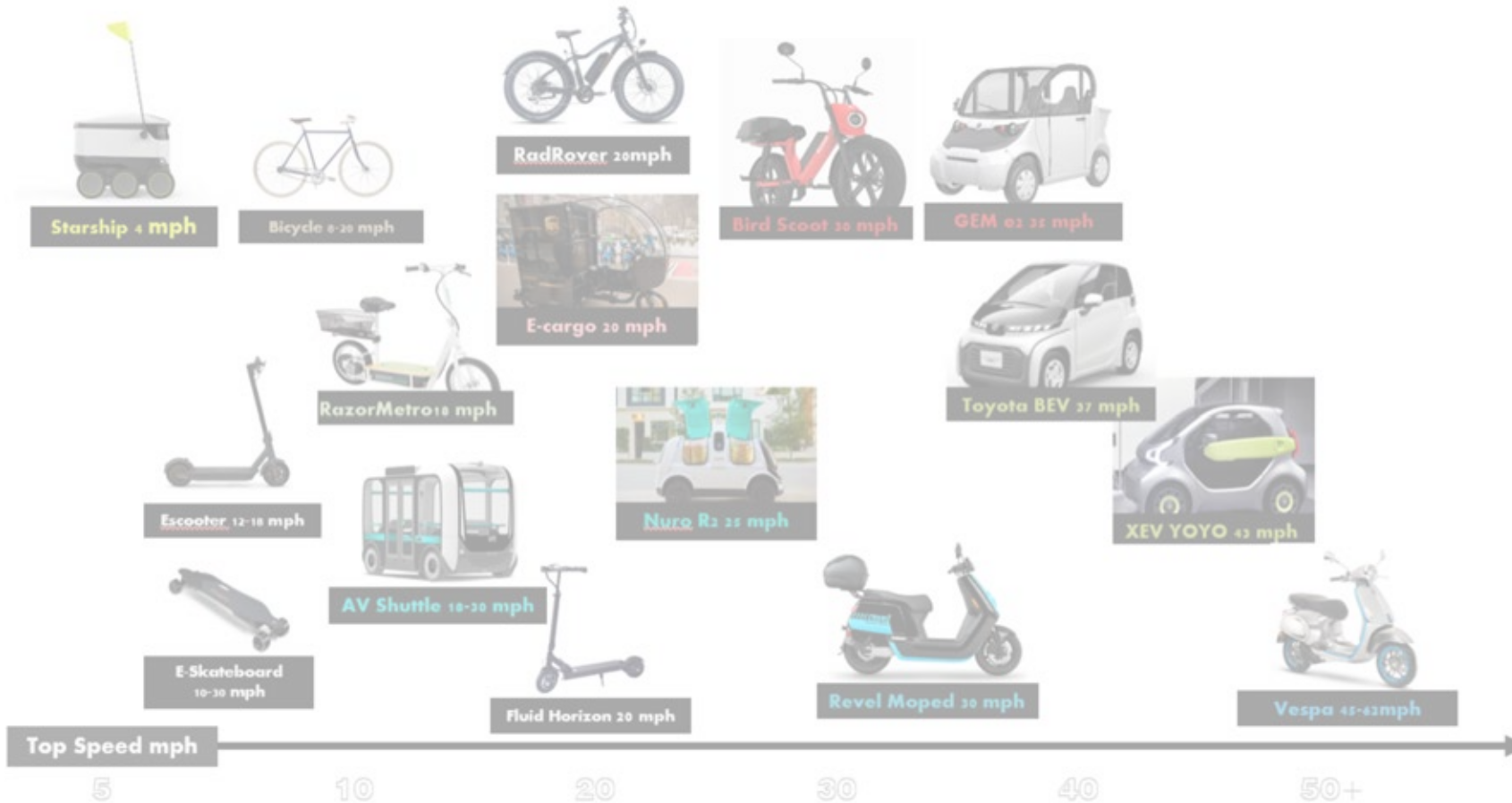
# Why is Transformation Needed?







# Why is Transformation Needed?





# Why is Transformation Needed?



Last "5 mile" Broadband



Changing Fleet Mix



Robotic Infrastructure



Intuitive Transit



Self Parking Vehicles



Hybrid Delivery-Tech



# Why is Transformation Needed?

## Overhauls

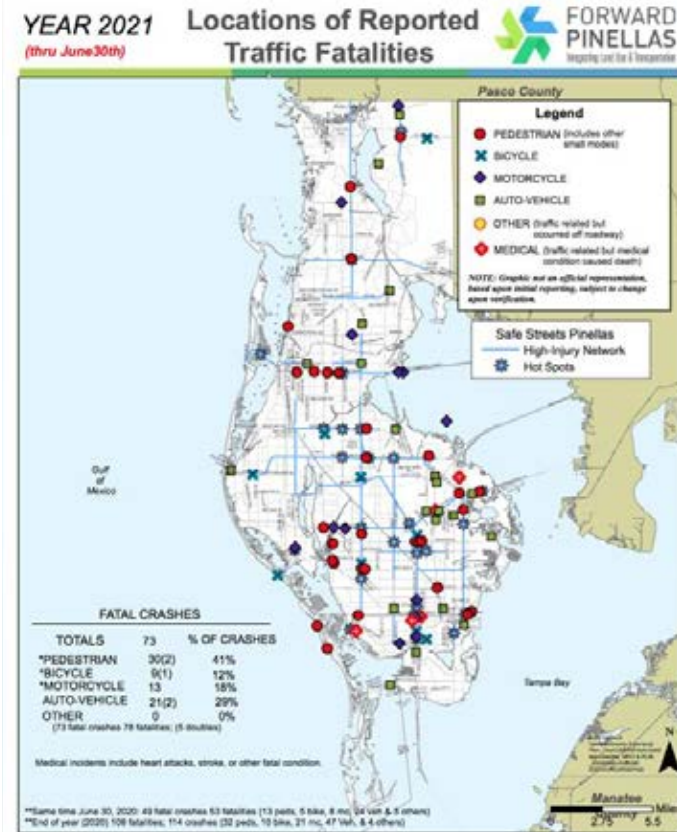
- MUTCD – speed controls
- Travel Demand Data & Modeling
- Project Prioritization Pilot Program

## Future of Funding

- Pilot on Road Usage Fees
- Expansion of use of highway funds to local roads



## Fatal crashes spike in Tampa Bay in first half of 2021







# Safety & Safe Systems Approach

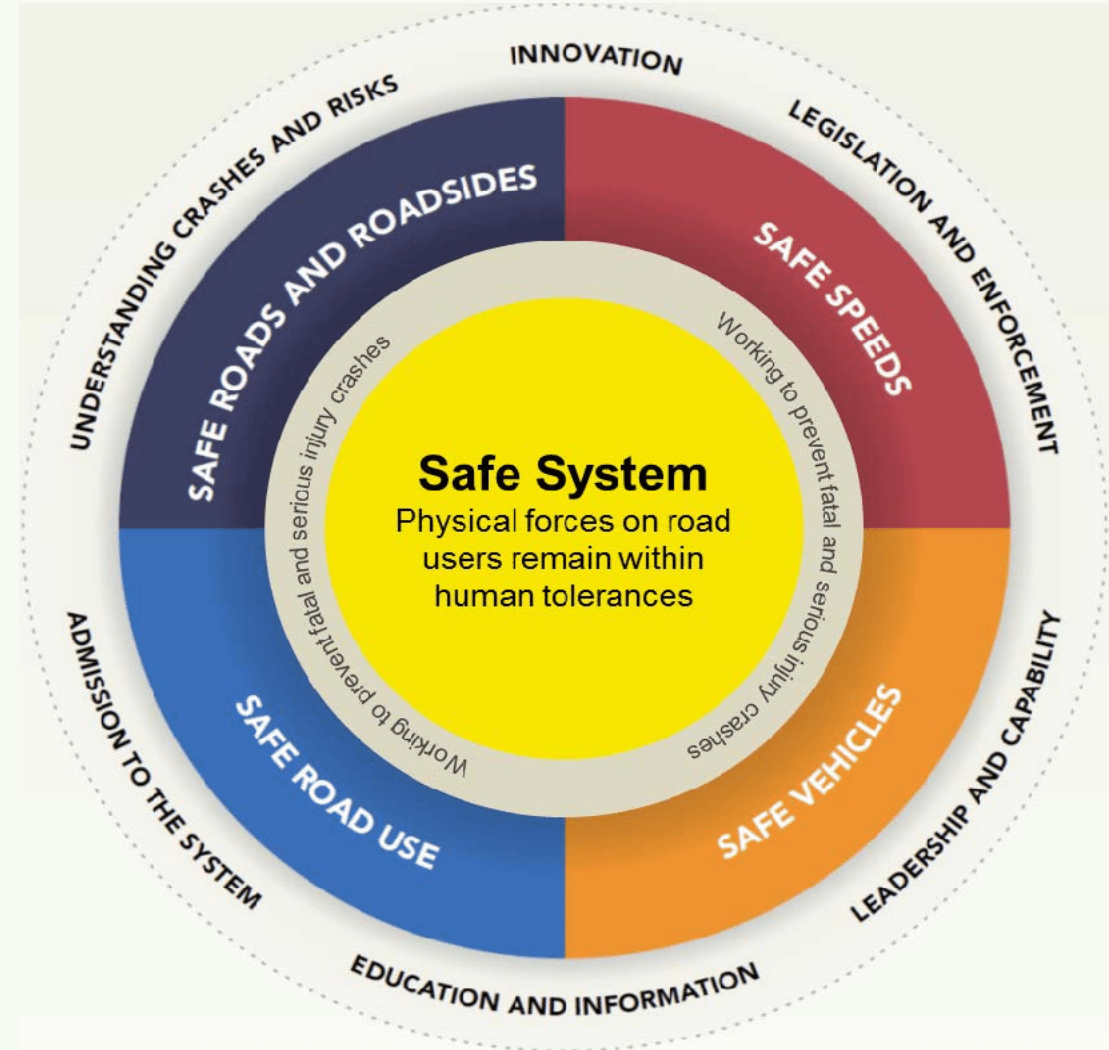
## What's Different?

Eliminate casualties by

*anticipating errors and reducing crash severity*

through *improved vehicle and roadway design*

that *lowers force factors for travelers inside & outside vehicles*







## What's Different?

Focal shift from auto throughput -> **access** to important destinations/services



### OBJECTIVES

Increase access to jobs, education, health, and other services for all residents

Increase the reliability and efficiency of people and freight trips

Increase alternatives to single occupancy vehicles



### PROGRESS INDICATORS

- Access to jobs
- Access to education and healthcare
- Broadband access
- Transportation options for traditionally underserved communities
- Percent of people working remotely
- Travel time reliability
- Truck travel time reliability index
- Person-hours of delay
- On time departure or arrival for aviation and passenger rail
- Freight hours/cost of delay
- Supply chain efficiency/resilience
- Person trips by mode, including bicycle/pedestrian and micromobility
- Number of automated and connected vehicles sold

*Florida's Transportation Plan (2020)*



# Resilience

## What's Different?

Climate mitigation and adaptation as primary infrastructure investments in largest programs

New emphasis on natural infrastructure



Mitigation is now highway funding purpose;  
green infrastructure an allowable project type

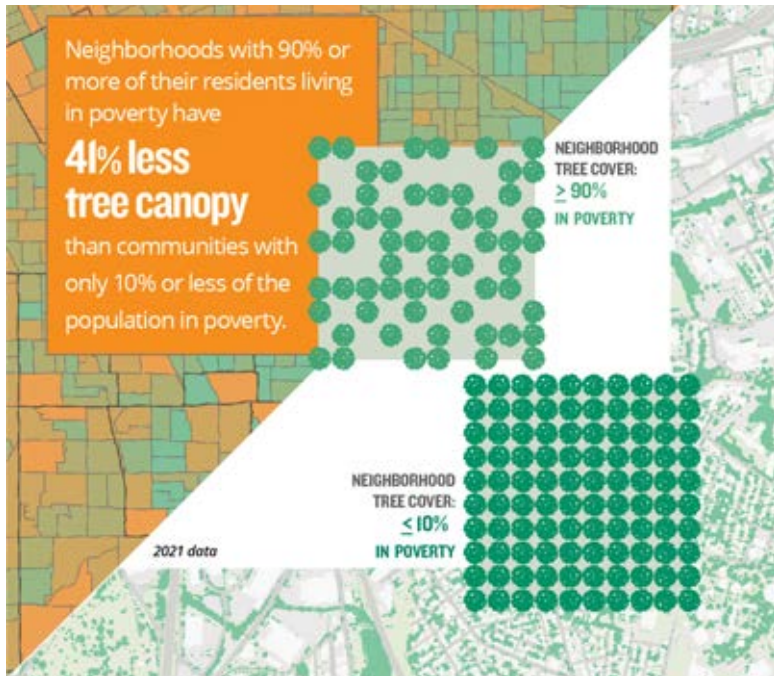
Listed in selection criteria

Highway funds to mitigate recurring damage  
or the cost of future repairs for local roads  
>\$1B in Florida



## What's Different?

Action to redress inequitable investments in infrastructure and multi-modal transportation (including income, age, and ability). The balance of investment and displacement.



American Forests

Equity analysis required for funding

Equity in selection criteria

Healthy Streets

Equity implications of AVs





# Fleet Electrification

## What's Different?

Accelerated investment in charging infrastructure & electric vehicles



Envoy

Recharging equipment an eligible project in **multiple** programs

Power and Grid investments (\$73B)

Low-Carbon and Zero-Emission  
School Buses & Ferries: \$7.5B





# Technology

## What's Different?

Accelerated investment in all realms of technology



USDOT



Cybersecurity



V2X  
(Vehicle to  
Everything)



Revenue

# Transit Oriented Development





# TOD – Transit Oriented Development



FTA defines TOD as development near or around a transit station or facility. Encourages a dense, walkable, mixed-use development near transit facilities attracts people and adds to vibrant, connected communities.

Successful TOD includes:

- Increased ridership and transit revenue
- Incorporates public and private sector engagement and investment
- Revitalize neighborhoods
- Improves housing options
- Economic improvement
- Congestion relief
- Improved safety for pedestrians and bicyclists



# TOD – Transit Oriented Development

- Mobility options
- Walkable and flexible
- Safe Communities
- Improve infrastructure and services for the area
- Reduce parking facilities and requirements
- Substantial differentiator in development
- Capitalize on external funding





# TOD Land use/ ROW

TOD allows creative use of space

- Reduced vehicle lanes and parking
- Multi-use areas
- Agencies encourage TOD with economic incentives
- Works for new, existing and repurposed properties

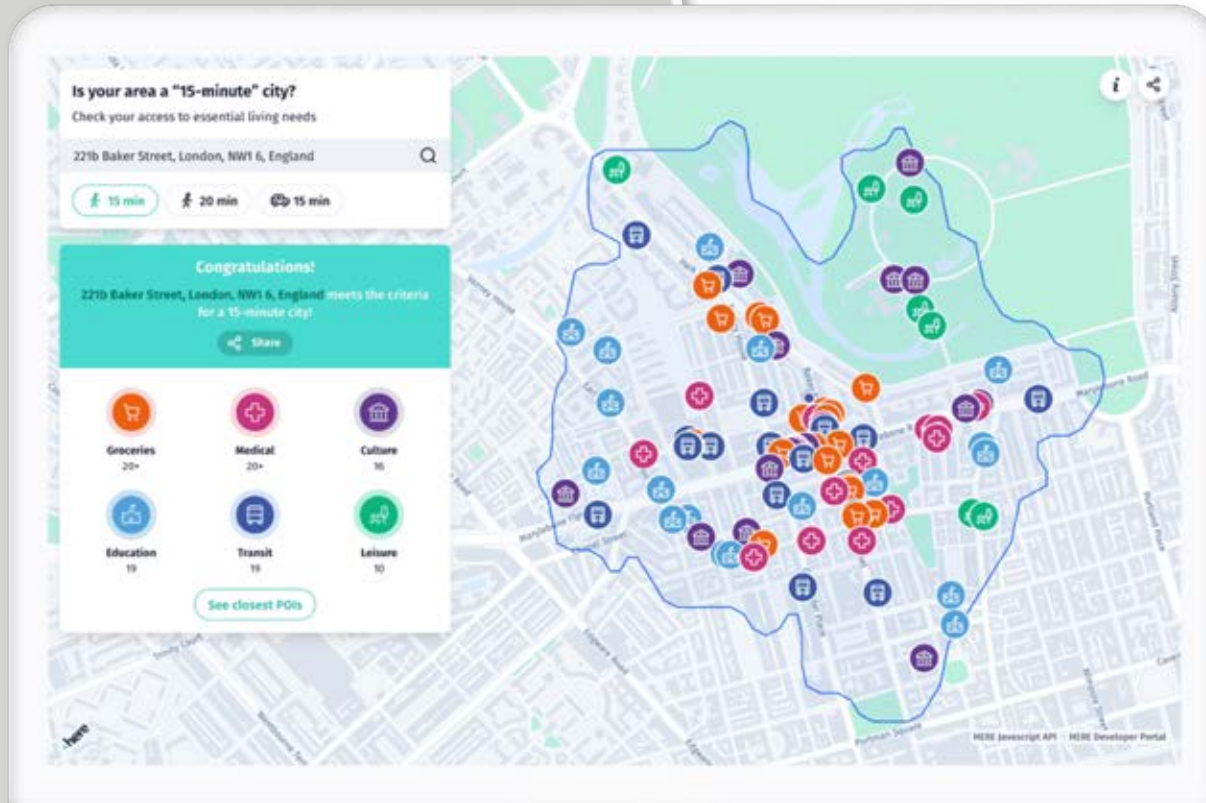


# The 15-Minute City

Urban Planning strategy to maximize access for residents

- Grocery
- Parks
- Daycare/ School
- Restaurants
- Shopping
- Medical
- Transit Hub

Concept wins 2021 Obel Prize for people centric and sustainable urban environments







# Transit Use Case

## Jacksonville Transit Authority

- Autonomous Transit Shuttles
- Improve mobility in downtown corridor
- Service special events, major employers, medical facilities
- Coordinate with local agencies, improve infrastructure for all

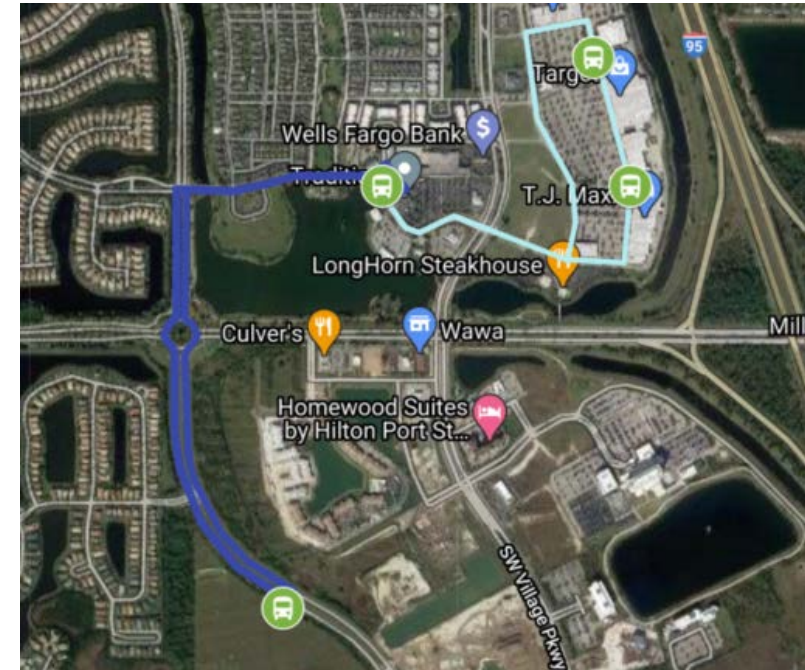




# Residential Use Case

## Mattamy Homes – Traditions Community

- Reduce parking needs and congestion in multi-zoned communities
- Improve pedestrian/bicycle safety
- Novel multi-use path design for active transportation and AV shuttles
- Improve retail/restaurant traffic inside development
- Unique amenities/ stand out
- Benefits young and old





# Retail/ED Use Case

## Dallas Mid-Town Galleria Mall Ara

- Encourages easy travel between retail facilities
- Reduced congestion/ Reduced parking needs
- Connects to larger transit hub stop in area
- Encourages more trips and more shopping!



Q & A



**Acey Roberts, PE**  
*Traffic Systems Manager*  
Tampa, FL

Acey.Roberts@WGInc.com  
813.638.8543

---

**Lisa Nisenson**  
*VP New Mobility & Connected Communities*  
West Palm Beach, FL

Lisa.Nisenson@WGInc.com  
561-268-5675

