

# ENR THE TOP 500

Overview p. 46 // Profitability p. 46 // Top 500 Volume p. 46 // Backlog p. 46 // Markets' Share of Total Revenue p. 47  
Revenue by Owner Type p. 47 // Domestic and International Staff Hiring p. 47 // International Market Analysis p. 48  
Past Decade's Design Revenue p. 48 // Harry W. Nice Bridge Replacement p. 49 // Top 500 Dialogue pp. 50, 59  
Top 20 Design Firms by Sector pp. 52-56 // East Midtown Greenway p. 60 // Top 50 Designers in International Markets p. 60  
Top 100 Pure Designers p. 63 // Miami Signature Bridge Pour p. 64 // DEI in Design p. 66 // How To Read the Tables p. 66  
Top 500 Design Firms List pp. 68-77 // Where To Find the Top 500 p. 78-79

NUMBER 107

## ELEVATE

Populous, along with Stantec and S2 Architecture, designed the \$500-million expansion of Calgary's BMO Centre.



RENDERING COURTESY OF POPULOUS

## Top Firms Invest to Do More

As federal spending drives project plans, firms draw owners a roadmap in a tricky market By Emell Adolphus and Jonathan Keller



**M**oney from the \$1.2-trillion Infrastructure Investment and Jobs Act has yet to reach most state agencies, but design firms report being busy with value engineering projects up to the shovel-ready phase. Owners appear revved up and ready to take advantage of federal funding, needing design firms more than ever to keep projects from getting stalled in a market plagued by shortages.

Overwhelmingly, the Top 500 Design Firms say staffing is their No. 1 priority going into the COVID-19 pandemic's third year, but revenue numbers show that firms are learning to do more with fewer hands on deck—at least for now. For the sixth consecutive year, total revenue for the Top 500 listed firms increased—rising 2.2% to \$107.11 billion in 2021. Median firm revenue has also rebounded after a dip last year, rising 3.8%, to \$67.45 million.

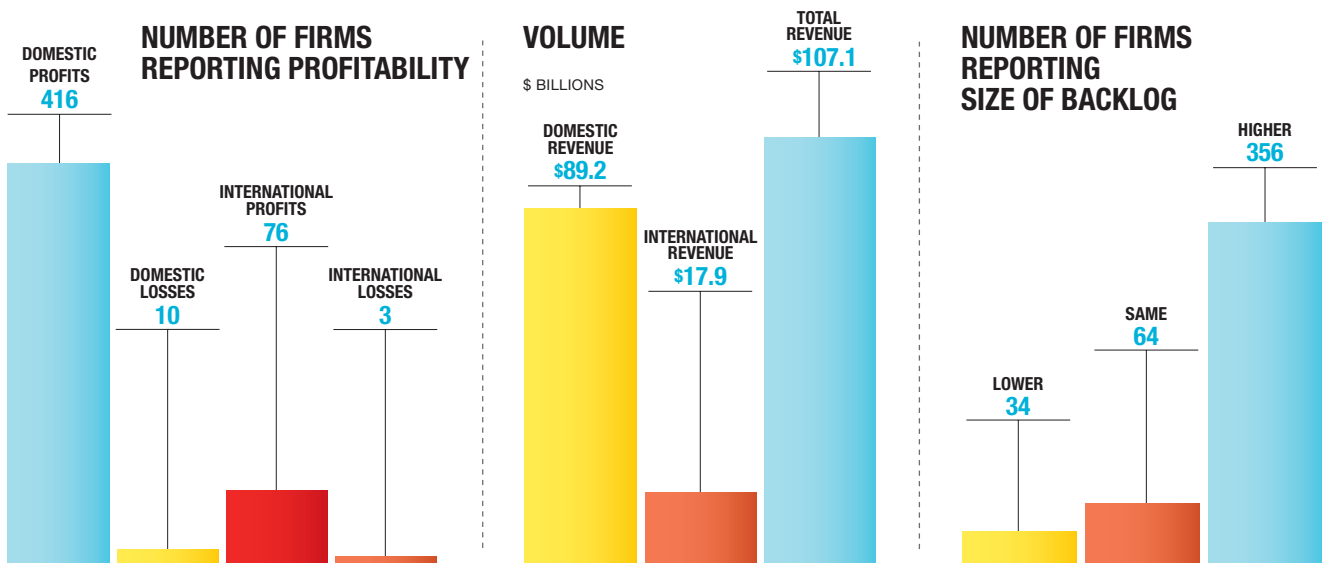
Keeping revenue in the Top 25 strong are big firms that win big projects requiring increased capacity to meet speed-to-market demands, such as building man-

ufacturing facilities for semiconductors and electric vehicle batteries.

For Kimley-Horn, which rose to No. 10 from No. 15 last year, one of the company's "fastest-growing markets focuses on the rapid transition to zero-emissions vehicles," says Jenna McDavid, its electric vehicles practice director. Funding from the IIJA is already having a significant influence on the company's scope of programs with local and state agencies.

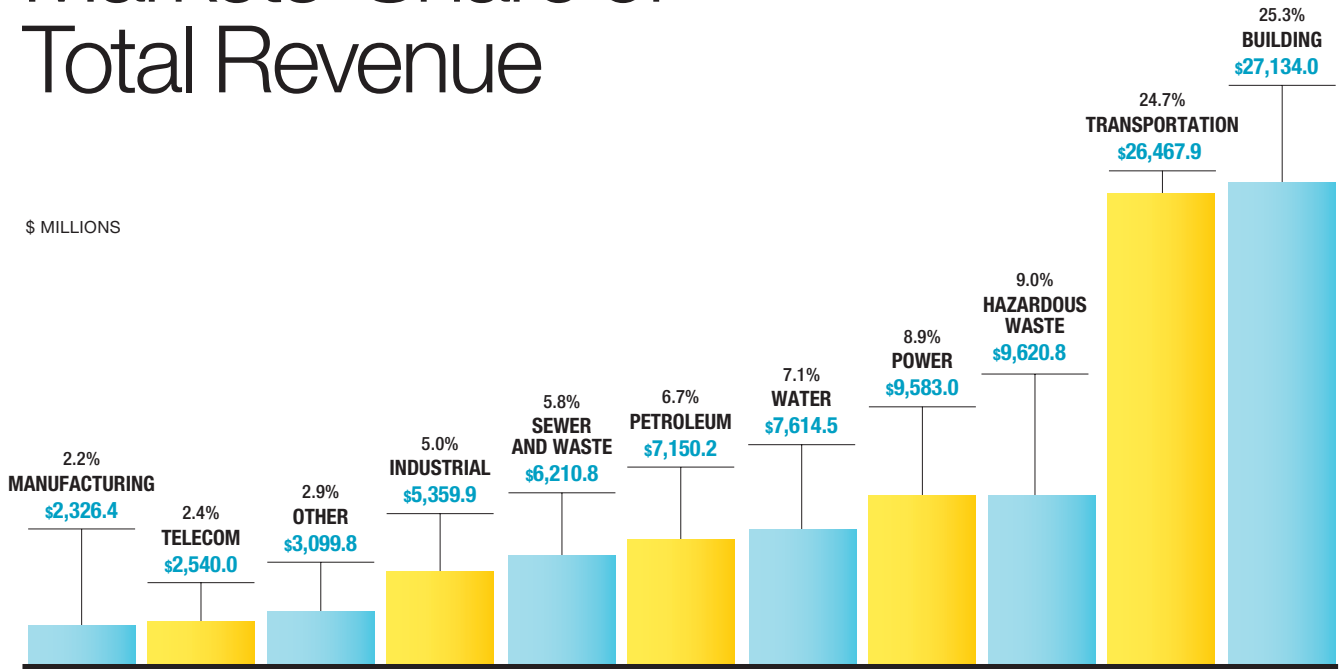
Mid-tier firms ranked from No. 50 to No. 100 also seem to be prepping to grab their share of federally funded projects. Revenue numbers show that they

## 2021-22 at a Glance



# Markets' Share of Total Revenue

\$ MILLIONS



increased their profit margins last year, and gross revenue rose 11.1%, on average.

Faced with rising inflation costs, firms are finding that they need greater capacity to meet demands for compressed delivery of design packages and construction schedules to avoid potential cost increases.

“The name of the game is building a strong AEC team committed to serving clients to help them meet their goals,” says Kevin McNutt, director of engineering at BSA LifeStructures. A team must be “open and flexible to the unexpected along the way,” he adds.

How firms go about creating these teams seems to be as diverse as the firms themselves.

## Data-Driven Decisions

As part of scaling up the breadth of its design services, Jacobs says the company is thinking far “beyond traditional scope, schedule and budget” to meet demands of the market and changing client needs. The firm has held the No. 1 position on the Top 500 list since 2018.

On March 3, Jacobs announced the creation of a new data solutions accelerator that will integrate cloud,

**465**

Top 500 firms sent in surveys last year.

**70.1%**

of firms report revenue rose between 2020 and 2021.

**\$39.6**

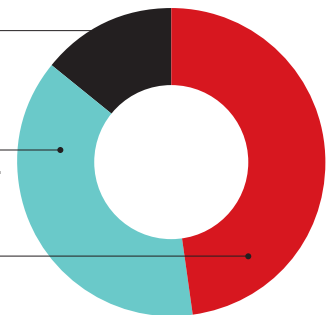
million: median revenue among architecture firms.

## PERCENT SHARE OF TOTAL REVENUE BY OWNER TYPE

FEDERAL  
**14.1%**

STATE/LOCAL  
**37.9%**

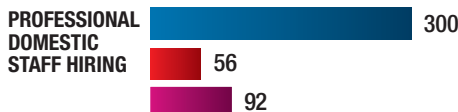
PRIVATE  
**48%**



cyber and data-management technologies for clients across all of its design markets.

“This move recognizes the significant progress we’ve made,” says Steve Arnette, president of its Critical Mission Solutions unit.

“More than that,” Arnette adds, “it acknowledges the importance of embracing disruption and innova-

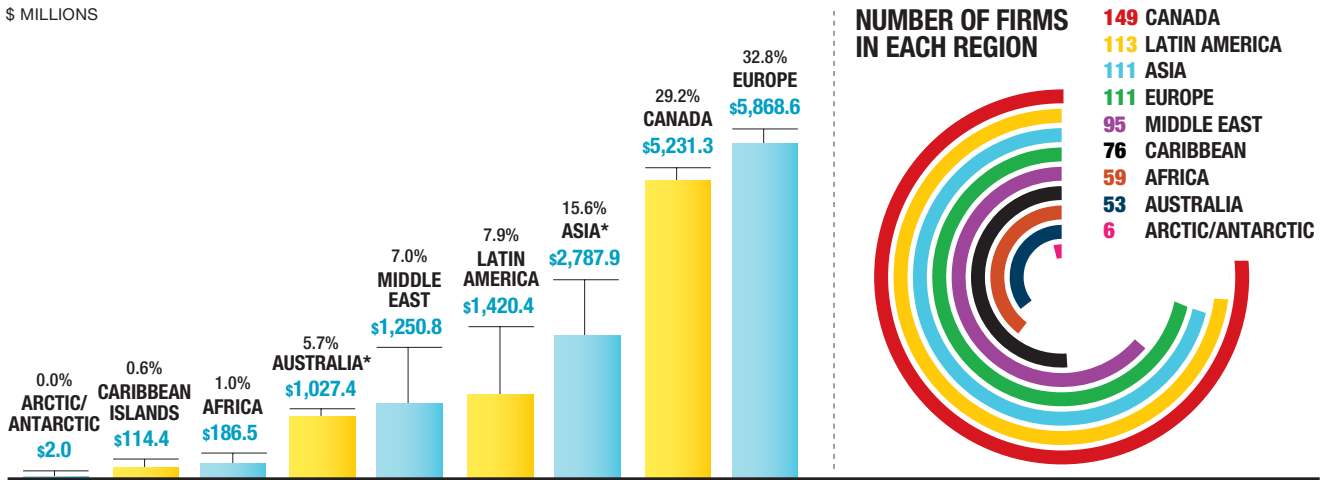


(MEASURED IN FIRMS REPORTING)

SOURCE: ENR

# International Market Analysis

\$ MILLIONS



tion to drive solutions horizontally across the company and create value for our clients.”

For Burns & McDonnell, moving company operations to cloud-based platforms has allowed for better resilience, availability, cost management and security, says chairman and CEO Ray Kowalik. “Our clients continue to move toward more integrated delivery



**“There is a positive shift in the company to ensure data of all types is treated as a core, crucial asset.”**

Dave Freeman, VP, operations controller, Kiewit

models,” he says. “They are increasingly wanting one entity to handle their project safely, on schedule and on budget,” Kowalik says, which makes protection of client data even more paramount.

“Cloud computing has been an area of explosive growth, and we are working with the biggest names in

tech to develop data centers around the world,” he says. “Our data center, architecture, engineering and construction teams have grown significantly to meet these needs.”

To help the firm better calculate operational and financial risks long before shovels hit the dirt, Kiewit Corp. has also rolled out major investments in data technology, says vice president and operations controller Dave Freeman.

“We’ve placed greater emphasis on capturing the right data to drive better analysis and operational improvements,” he says.

In addition to changes to the company’s overall data management processes and structure, Kiewit has added data stewards for “monitoring data use to ensure accountability,” Freeman points out.

“There is a positive shift in the company to ensure data of all types is treated as a core, crucial asset to better estimate our work at the right price, build work at the lowest cost, and manage our people and assets,” Freeman adds.

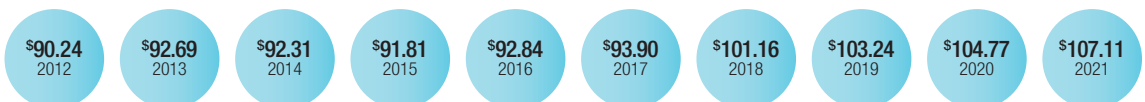
### Putting Technology to Work

In the last several years, Hargrove Engineers + Constructors has made what it says are significant investments in its in-house laser-scanning team, with numer-

### COMPARING THE PAST DECADE’S DESIGN REVENUE

\$ BILLIONS

SOURCE: ENR





ous technologies, including drones, laser scanners, ground-penetrating radar and electromagnetic detection systems. Team members receive Federal Aviation Authority certification to operate drones.

“This equipment can maximize the data collected and minimize the number of trips to client facilities,” says President and CEO Ralph A. Hargrove. “This team is also able to incorporate [virtual reality] elements to our client-facing materials in the design phases of a project, making communication clearer and more precise.”

Additionally, Hargrove finds more clients are expecting digital-twin technology and process modeling packaged as value-added services. “Examples of services offered include equipment analysis and trouble-

shooting, optimizing real-time process controls, and predictive maintenance,” says Hargrove. “Expected client benefits include increased throughput and quality, lower operating costs and increased equipment uptime.”

Barr Engineering says the company is continually learning by experimenting with technology applications, including integrating 3D scan data with simulation and augmented reality. The firm recently acquired an augmented reality platform that allows it to view and interact with GIS and 3D designs overlaid on real-world data and imagery.

“We’ve been piloting the platform for the past few months and will be using it for an upcoming client project,” says Ward Swanson, president and CEO.

### Mist on the Water | By Jonathan Keller



KCI Technologies (**No. 48**) is providing construction management and inspection services on the replacement of the Governor Harry W. Nice Memorial/Senator Thomas ‘Mac’ Middleton Bridge over the Potomac River between Maryland and Virginia. Built north of the existing bridge, the new structure will double available lanes from two to four, and enable tall ships to pass beneath. Upon completion of the new bridge, the existing structure will be demolished and materials will be used to create an artificial fish reef in the Chesapeake Bay watershed.

# The Top 500 Dialogue

## Where has your firm seen the most success retaining qualified staff amid labor shortages?

**#268**  
on the  
Top 500 List



**JENNA KNUDSEN, MANAGING PRINCIPAL**  
**CO ARCHITECTS**  
Los Angeles

We encourage staff to propose initiatives in support of continual improvement. Going back 12 years, a group of women started a Women of CO employee group to provide mentorship and professional advancement among our female staff. We're more than 50% female.

**#32**  
on the  
Top 500 List



**RANDY GRASS, CHIEF STRATEGY OFFICER**  
**POWER ENGINEERS**  
Hailey, Idaho

When you are reasonably satisfied with your retention numbers, this is the time to double down. Don't get complacent. Talk to your current employees, do a company-wide survey, find out what is important and work on it.

## How do you anticipate funding from the Infrastructure Investment and Jobs Act will change your work?

**#10**  
on the  
Top 500 List



**DAVID WHYTE, MARKETING MANAGER**  
**KIMLEY-HORN**  
Raleigh, N.C.

We are seeing a definitive uptick in business with localities and regional and state agencies, all of which are exhibiting confidence in their infrastructure programs and asking for increasing assistance in delivering them.

**#261**  
on the  
Top 500 List



**KUMAR BUVANENDARAN, PRESIDENT/CEO**  
**PRIME AE GROUP INC.**  
Baltimore

Because of how inclusive it is, once funding starts, it will be imperative that we are staffed appropriately to meet the needs of our clients. We foresee a bit of a juggling act—achieving parity where tactical utilization offsets anticipatory preparation.

# The Top 20 Design Firms by Sector

1 TRANSPORTATION			2 GENERAL BUILDING			3 INDUSTRIAL PROCESS/PETROLEUM		
Top 20 Revenue: \$15.9 Billion Top 20 Market Share: 60.1%			Top 20 Revenue: \$10.2 Billion Top 20 Market Share: 37.5%			Top 20 Revenue: \$9.8 Billion Top 20 Market Share: 78.1%		
RANK	2022	2021	RANK	2022	2021	RANK	2022	2021
1	1	AECOM	1	1	AECOM	1	1	FLUOR
2	2	JACOBS	2	2	GENSLER	2	3	WOOD
3	3	HNTB COS.	3	3	JACOBS	3	4	JACOBS
4	4	WSP USA	4	5	KIMLEY-HORN	4	2	WORLEY
5	6	HDR	5	4	PERKINS&WILL	5	**	INTERTEK-PSI
6	5	PARSONS CORP.	6	7	HDR	6	5	BECHTEL
7	8	KIMLEY-HORN	7	6	STANTEC INC.	7	6	KIEWIT CORP.
8	11	T.Y. LIN INTERNATIONAL	8	8	HKS	8	8	BURNS & MCDONNELL
9	7	STANTEC INC.	9	9	HOK	9	7	S&B ENGINEERS AND CONSTRUCTORS LTD.
10	10	STV GROUP INC.	10	10	TERRACON CONSULTANTS INC.	10	9	HARGROVE ENGINEERS + CONSTRUCTORS
11	9	SNC-LAVALIN INC.	11	12	WSP USA	11	12	CRB
12	14	GANNETT FLEMING	12	15	CANNONDESIGN	12	14	IPS-INTEGRATED PROJECT SERVICES LLC
13	12	MICHAEL BAKER INTERNATIONAL	13	18	TETRA TECH INC.	13	**	FOTH
14	13	MOTT MACDONALD	14	17	SMITHGROUP	14	**	BARRY-WEHMILLER DESIGN GROUP
15	16	JOHNSON MIRMIRAN & THOMPSON INC. (JMT)	15	**	UNIVERSAL ENGINEERING SCIENCES	15	19	STANTEC INC.
16	17	RS&H INC.	16	19	IBI GROUP INC.	16	18	TRC COS. INC.
17	18	EXP	17	11	SKIDMORE OWINGS & MERRILL	17	**	DENNIS GROUP
18	**	TRANSYSTEMS	18	16	PERKINS EASTMAN	18	**	KLEINFELDER
19	**	MOFFATT & NICHOL	19	**	ARCADIS NORTH AMERICA/CALLISON RTKL	19	**	AECOM
20	**	KIEWIT CORP.	20	13	DLR GROUP	20	**	THE YATES COS. INC.

In the areas of AI and data science, the firm is developing what it refers to as a “Data Science Pipeline” to streamline its ability to perform advanced analysis on project data.

“We’ve seen a large increase in the size of data we are collecting, recently moving from billions of



**“We understand that our work has lasting impacts on people's lives, so the center ensures every WSP project integrates equity.”**

Lou Cornell, CEO, WSP

records to a project requiring us to collect over a trillion records during the lifetime of the project,” says Swanson, explaining that he foresees projects evolving to “require a deeper understanding of what normally occurs through typical data analysis and visualization.”

### Adding DEI to Design Services

As much as COVID-19 has put a focus on digital innovation, firms are also finding themselves having deeper discussions with clients about long-term design packages that help cut carbon emissions, execute ESG goals and meet diversity, equity and inclusion (DEI) markers for stakeholders.

Steinberg Hart President and CEO David Hart says the firm’s focus on DEI has been its biggest success.

“I think it’s the path to even greater successes for our firm in the future,” says Hart. “We’re having real conversations with our clients and actively pursuing ways to improve processes and outcomes on our projects. It’s a long-term plan.

“This has always been something we strived for, but the pandemic really pushed us to the next level,” he adds.

Recognizing how infrastructure spending could transform communities and leave others behind, WSP USA recently formed the Equity Center of Excellence to “drive the transformation of infrastructure to full and equitable access for underserved, marginalized and disinvested communities,” says CEO Lou Cornell.

Equity has become a measure of progress tied to many infrastructure developments as a vital lifeline for communities, he notes.

# The Top 20 Design Firms by Sector

4		HAZARDOUS WASTE		5		POWER		6		WATER	
RANK		Top 20 Revenue: \$8.7 Billion Top 20 Market Share: 90.5%		RANK		Top 20 Revenue: \$6.8 Billion Top 20 Market Share: 70.5%		RANK		Top 20 Revenue: \$5.6 Billion Top 20 Market Share: 73.9%	
2022	2021			2022	2021			2022	2021		
1	1	JACOBS		1	1	BURNS & MCDONNELL		1	1	TETRA TECH INC.	
2	2	AECOM		2	2	BLACK & VEATCH		2	3	JACOBS	
3	6	FLUOR		3	3	POWER ENGINEERS INC.		3	2	AECOM	
4	3	ARCADIS NORTH AMERICA/CALLISON RTKL		4	7	JACOBS		4	4	CDM SMITH	
5	4	TETRA TECH INC.		5	4	SARGENT & LUNDY		5	5	HDR	
6	5	LEIDOS		6	5	TRC COS. INC.		6	6	STANTEC INC.	
7	8	BECHTEL		7	6	KIEWIT CORP.		7	8	ARCADIS NORTH AMERICA/CALLISON RTKL	
8	7	TRC COS. INC.		8	8	AECOM		8	7	BLACK & VEATCH	
9	9	WOOD		9	10	WSP USA		9	9	CAROLLO ENGINEERS INC.	
10	10	GHD INC.		10	9	LEIDOS		10	14	HAZEN AND SAWYER	
11	11	GEOSYNTEC CONSULTANTS		11	11	TETRA TECH INC.		11	12	GHD INC.	
12	**	OBG PART OF RAMBOLL		12	13	NV5 GLOBAL INC.		12	10	MICHAEL BAKER INTERNATIONAL	
13	12	PARSONS CORP.		13	**	EN ENGINEERING LLC		13	13	GANNETT FLEMING	
14	13	SNC-LAVALIN INC.		14	12	HDR		14	11	BROWN AND CALDWELL	
15	15	WSP USA		15	14	WOOD		15	15	WOOD	
16	14	TERRACON CONSULTANTS INC.		16	17	STANTEC INC.		16	17	MOTT MACDONALD	
17	18	BURNS & MCDONNELL		17	15	ENERCON		17	18	NV5 GLOBAL INC.	
18	17	CDM SMITH		18	**	FUGRO USA		18	16	FREESE AND NICHOLS INC.	
19	16	LANGAN		19	20	ULTEIG ENGINEERS INC.		19	**	BURNS & MCDONNELL	
20	19	HALEY & ALDRICH INC.		20	**	MESA ASSOCIATES INC.		20	19	DEWBERRY	

“We understand that our work has lasting impacts on people’s lives, so the center ensures that every WSP project integrates equity into its processes, from planning to resourcing to implementation and use,” Cornell explains.

Clients measuring a design firm’s culture, values and DEI programs against their own quickly are becoming the norm, says Greg Hurd, president and CEO of BKF Engineers.

“When selecting consultants, owners are seemingly more interested in working with firms that amplify diversity and align with their own cultures and values, rather than the portfolio of our services,” says

Hurd. “While services and experience are a key aspect of selecting BKF, we are seeing more owners interested in our culture and how we incorporate DEI into our design philosophy.”

Design firms that are engineering diversity, equity and inclusion philosophy into projects is another way they can add more to their scope of services with minimal risk, says Huckabee CEO Christopher M. Huckabee.

“For many clients, we are developing COVID-19 market impact statements that are tailored to their community and based on research and our experience,” says Huckabee.

In the education market, Huckabee helps clients communicate with stakeholders on project impacts. It’s an opportunity for the firm to provide wrap-around services, such as communication strategy, but also serve as a voice in the industry, says Huckabee.

More than a project consultant, clients are looking for a partner that will help them navigate the fluctuating construction market, he says.

“Huckabee works with our educational partners to develop strategies that involve prototype design, early design packages pre-bond, shorter duration in between bonds and different construction delivery methods,” says Huckabee.



**“We are seeing more owners interested in our culture and how we incorporate DEI into our design philosophy.”**

Greg Hurd, President and CEO, BKF Engineers



# The Top 20 Design Firms by Sector

7 SEWER AND WASTE			8 TELECOMMUNICATIONS			9 MANUFACTURING		
Top 20 Revenue: \$4.1 Billion Top 20 Market Share: 66.0%			Top 20 Revenue: \$1.9 Billion Top 20 Market Share: 76.5%			Top 20 Revenue: \$1.7 Billion Top 20 Market Share: 74.4%		
RANK	2022	2021	RANK	2022	2021	RANK	2022	2021
1	1	1	1	1	1	1	1	1
2	2	2	2	4	4	2	2	2
3	3	3	3	3	3	3	**	INTERTEK-PSI
4	4	4	4	5	5	4	3	GHAFARI ASSOCIATES LLC
5	10	10	5	6	6	5	4	SSOE GROUP
6	5	5	6	2	2	6	**	MERRICK & CO.
7	6	6	7	7	7	7	7	WARE MALCOMB
8	7	7	8	15	15	8	10	LEIDOS
9	9	9	9	16	16	9	6	BURNS & MCDONNELL
10	11	11	10	10	10	10	5	EXYTE AMERICAS HOLDING INC.
11	8	8	11	12	12	11	**	WUNDERLICH-MALEC ENGINEERING INC.
12	12	12	12	13	13	12	**	TAI ENGINEERING
13	13	13	13	8	8	13	**	WSP USA
14	14	14	14	14	14	14	14	SNC-LAVALIN INC.
15	15	15	15	**	**	15	15	MATRIX TECHNOLOGIES INC.
16	17	17	16	17	17	16	**	OBG PART OF RAMBOLL
17	20	20	17	**	**	17	9	CHA CONSULTING INC. (CHA)
18	**	**	18	20	20	18	11	RS&H INC.
19	19	19	19	**	**	19	**	GRESHAM SMITH
20	16	16	20	18	18	20	**	GZA



**“For many clients, we are developing COVID-19 market impact statements that are tailored to their community.”**

Christopher M. Huckabee, CEO, Huckabee

Design firms are facing two distinct challenges in staffing needs and managing pressures of construction costs. “Very different items, but also very intertwined,” he says. How design firms holistically find solutions for both will play a big role in whether infrastructure act spending strengthens the economy.

### Private Equity Pushes Performance

Firms did not just see a rise in gross revenue this year. Out of 426 firms that reported domestic profitability, 97.6% saw a profit, a slight increase from 2020. The average profit margin was 14.2%, up significantly from last year’s 10.5%. Additionally, 29.2% of firms

reported a lower backlog compared to last year’s 2021 Top 500 survey. That percentage dropped to 7.5% on this year’s survey.

After recovering somewhat last year, revenue numbers for the petroleum design market plummeted 27.6% in 2021, down to \$7.15 billion. The market is at its lowest level since the 2004 Top 500 list.

The largest riser is the industrial process market, up 32.5% to \$5.36 billion. That is the highest total revenue the market has seen since 2013.

Longer term, the share of Top 500 revenue owned by the leading 10 firms has decreased significantly in the past decade. The top 10 accounted for 43.3% of total 2012 Top 500 revenue. That number dropped to 35.5% on this year’s list. Medium-sized firms have been the particular beneficiaries of this change. Firms ranked between Nos. 126 and 250 have increased their share of revenue to 11.5% this year from 8.3% in 2012. Firms ranked from Nos. 251 to 375 have risen from 4.7% to 6.2% of the total. This trend has already been spotted by industry observers.

Studies done by Morrissey Goodale, a Natick, Mass.-based management consultant and M&A adviser, point to the influx of private equity into the

# The Top 500 Dialogue

**What markets are proving to be the hottest for your firm? Any plans to delve into new markets?**

**#398**  
on the  
Top 500 List



**KRAIG C. KERN, VICE PRESIDENT**  
**WK DICKSON**  
Charlotte, N.C.

We have ventured into the energy market, specifically natural gas, because all of this rapid development needs new utilities and relocations, including gas. This has been very lucrative for us, and we have seen 25% revenue gains year after year for the last five years.

**#338**  
on the  
Top 500 List



**ABUL ISLAM, PRESIDENT/CEO**  
**AI ENGINEERS**  
Middletown, Conn.

Conventional transportation, bridge, transit, civil and facilities with storage capacity and residential work are proving to be hot markets due to an influx of consumer and infrastructure spending. We are expanding our portfolio to include private sector work to supplement our public infrastructure work.

**In what ways would you say your firm has evolved the most over the past year?**

**#383**  
on the  
Top 500 List



**SHANE JEFFERIES, DIRECTOR OF IT**  
**MILHOUSE**  
Chicago

To accelerate our organization's digital transformation over the last two years, we have focused on collecting pertinent data to drive business decisions, proactively automate strategy and better position the organization to increase positive business outcomes.

**#130**  
on the  
Top 500 List



**PATRICK SHEEHAN, PRESIDENT/CEO**  
**GZA**  
Norwood, Mass.

Besides accelerating our ability to truly work anywhere, we feel increased cross-company communications during the pandemic have only improved our ability to connect efficiently and effectively with each other and our clients.

industry as a prime mover. According to the firm’s data, the median revenue of private equity-backed firms in the top 100 of ENR’s Top 500 list grew 31% between 2017 and 2020. Publicly traded firms grew 8%.

“If you look at the [2021] ENR Top 10, it’s predominantly populated by ‘old line’ larger publicly traded firms,” says Mick Morrissey, managing principal at Morrissey Goodale, noting that eight of the top 10 were publicly traded firms. There are no private equity-backed firms in the top 10.

Much of that private equity-backed growth is built through acquisition. Purchase deals backed by private equity firms increased to 35% of the total number of U.S. deals last year, from 10% in 2013, according to Morrissey Goodale data.

In contrast, the share of acquisitions made by public firms has been dropping steadily. These accounted for 25% of all acquisitions in 2007 but are down to just 6% year-to-date in 2022. Morrissey sees a market where it is increasingly difficult for publicly traded firms to outbid their private equity rivals. “In some cases PE firms have as much capital available to deploy as these big public firms,” he says.

Ardurra fits that profile, making 20 acqui-

**Caissons** | By Jonathan Keller



Tectonic Engineering Consultants, Geologists and Land Surveyors (No. 186) is providing inspection services on Manhattan’s East Midtown Greenway project. It involves construction of a series of walkways and small parks, projecting out into the East River south of the Queensboro Bridge, on caisson-supported platforms. Construction is expected to be complete by 2023.

## The Top 50 Designers in International Markets

RANK 2022	RANK 2021	FIRM
1	1	AECOM
2	3	JACOBS
3	2	FLUOR
4	4	TETRA TECH INC.
5	6	WOOD
6	9	EXP
7	13	HDR
8	8	INTERTEK-PSI
9	10	PARSONS CORP.
10	15	IBI GROUP INC.
11	12	BECHTEL
12	14	T.Y. LIN INTERNATIONAL
13	16	GHD INC.
14	11	BLACK & VEATCH
15	17	GENSLER
16	7	WORLEY
17	32	ARCADIS NORTH AMERICA/CALLISON RTKL

RANK 2022	RANK 2021	FIRM
18	19	CDM SMITH
19	18	KOHN PEDERSEN FOX ASSOCIATES PC
20	24	PERKINS&WILL
21	22	MOTT MACDONALD
22	20	SKIDMORE OWINGS & MERRILL
23	36	BURNS & MCDONNELL
24	34	KIEWIT CORP.
25	23	MORRISON HERSHFIELD
26	25	HOK
27	**	JENSEN HUGHES
28	27	ARUP
29	**	BEAM LONGEST & NEFF
30	28	NORR
31	35	SARGENT & LUNDY
32	29	PERKINS EASTMAN
33	30	POPULOUS
34	38	THORNTON TOMASETTI

RANK 2022	RANK 2021	FIRM
35	33	PAGE
36	37	GEOSYNTEC CONSULTANTS
37	26	INTEGRAL GROUP
38	41	IPS-INTEGRATED PROJECT SERVICES LLC
39	39	WATG
40	**	WOOLPERT INC.
41	43	WSP USA
42	40	HKS
43	42	STANLEY CONSULTANTS
44	**	CRB
45	46	GANNETT FLEMING
46	**	WALDEMAR S. NELSON AND CO. INC.
47	44	POWER ENGINEERS INC.
48	50	NV5 GLOBAL INC.
49	**	FUGRO USA
50	47	COWI NORTH AMERICA

# The Top 100 Pure Designers

RANK	FIRM	FIRM TYPE	RANK	FIRM	FIRM TYPE	RANK	FIRM	FIRM TYPE
1	JACOBS	EAC	36	RS&H INC.	EA	71	VOLKERT INC.	E
2	TETRA TECH INC.	E	37	WILLDAN	E	72	MEAD & HUNT INC.	EA
3	HDR	EA	38	WOOLPERT INC.	O	73	ENERCON	E
4	WSP USA	E	39	SKIDMORE OWINGS & MERRILL	AE	74	GEI CONSULTANTS INC.	E
5	STANTEC INC.	EA	40	CANNONDESIGN	AE	75	CORGAN	A
6	KIMLEY-HORN	O	41	HAZEN AND SAWYER	E	76	PENNONI	E
7	HNTB COS.	EA	42	LJA ENGINEERING	E	77	WARE MALCOMB	AE
8	GENSLER	A	43	CAROLLO ENGINEERS INC.	E	78	HALFF ASSOCIATES INC.	EA
9	ARCADIS NORTH AMERICA/CALLISON RTKL	EA	44	EN ENGINEERING LLC	E	79	STANLEY CONSULTANTS	EA
10	TRC COS. INC.	E	45	JOHNSON MIRMIRAN & THOMPSON INC. (JMT)	EA	80	DAVID EVANS ENTERPRISES INC.	E
11	LEIDOS	E	46	CHA CONSULTING INC. (CHA)	EA	81	ALFRED BENESCH & CO.	E
12	TERRACON CONSULTANTS INC.	E	47	VHB	E	82	CIVIL & ENVIRONMENTAL CONSULTANTS INC.	E
13	INTERTEK-PSI	EC	48	SMITHGROUP	AE	83	GARVER	E
14	NV5 GLOBAL INC.	E	49	ENGINEERING CONSULTING SERVICES (ECS)	E	84	SAM LLC	E
15	EXP	EA	50	THORNTON TOMASETTI	EA	85	FREESE AND NICHOLS INC.	E
16	GHD INC.	O	51	FUGRO USA	GE	86	BGE INC.	E
17	MICHAEL BAKER INTERNATIONAL	EA	52	FOTH	E	87	BARR ENGINEERING CO.	E
18	GANNETT FLEMING	EA	53	PERKINS EASTMAN	A	88	POPULOUS	A
19	MOTT MACDONALD	E	54	GREENMAN-PEDERSEN INC. (GPI)	E	89	BRAUN INTERTEC CORP.	GE
20	T.Y. LIN INTERNATIONAL	EA	55	IMEG CORP.	E	90	WESTWOOD PROFESSIONAL SERVICES	E
21	POWER ENGINEERS INC.	E	56	DLR GROUP	AE	91	KOHN PEDERSEN FOX ASSOCIATES PC	A
22	PERKINS&WILL	A	57	RK&K	E	92	WHITMAN REQUARDT AND ASSOCIATES LLP	EA
23	SARGENT & LUNDY	E	58	OLSSON INC.	E	93	MERRICK & CO.	EA
24	STV GROUP INC.	EA	59	WOODARD & CURRAN	E	94	ARDURRA GROUP INC.	E
25	DEWBERRY	EA	60	CONSOR ENGINEERS	E	95	WISS JANNEY ELSTNER ASSOCIATES	EA
26	BROWN AND CALDWELL	E	61	TRANSYSTEMS	E	96	HGA	AE
27	ARUP	E	62	SALAS O'BRIEN	EA	97	PAPE-DAWSON ENGINEERS INC.	E
28	IBI GROUP INC.	AE	63	CARDNO INC.	E	98	BOWMAN CONSULTING GROUP	E
29	GEOSYNTEC CONSULTANTS	E	64	JENSEN HUGHES	E	99	AFFILIATED ENGINEERS INC.	E
30	HOK	AE	65	ATWELL LLC	E	100	S&ME INC.	E
31	UNIVERSAL ENGINEERING SCIENCES	GE	66	MOFFATT & NICHOL	E			
32	HKS	A	67	ZGF ARCHITECTS	A			
33	KLEINFELDER	EA	68	GRESHAM SMITH	AE			
34	LANGAN	E	69	KPFF CONSULTING ENGINEERS	E			
35	KCI TECHNOLOGIES INC.	EC	70	PAGE	AE			

**KEY TO TYPE OF FIRM**

A=architect, E=engineer, EC=engineer-contractor  
 AE=architect-engineer, EA=engineer-architect  
 ENV=environmental, GE=geotechnical engineer  
 L=landscape architect, P=planner and O=other.  
 Other combinations are possible. Firms classified themselves.

sitions as part of an expansion program implemented in 2017.

“We set out to build and grow a culture-focused firm with the driving philosophy centered around providing opportunities for our employees and exceptional service to our clients,” says CEO Ernesto Aguilar. “This foundation has guided us in expanding existing services and territories, as well as penetrating new markets and geographies.”

Ardurra’s strategic plan sets goals for acquisitive growth at 20% and organic growth at about 15% per year, says Aguilar, and tactics to achieve goals must align with its market share expansion strate-

**On the Web**

For expanded content on ENR’s Top Lists, see [ENR.com/toplists](http://ENR.com/toplists).

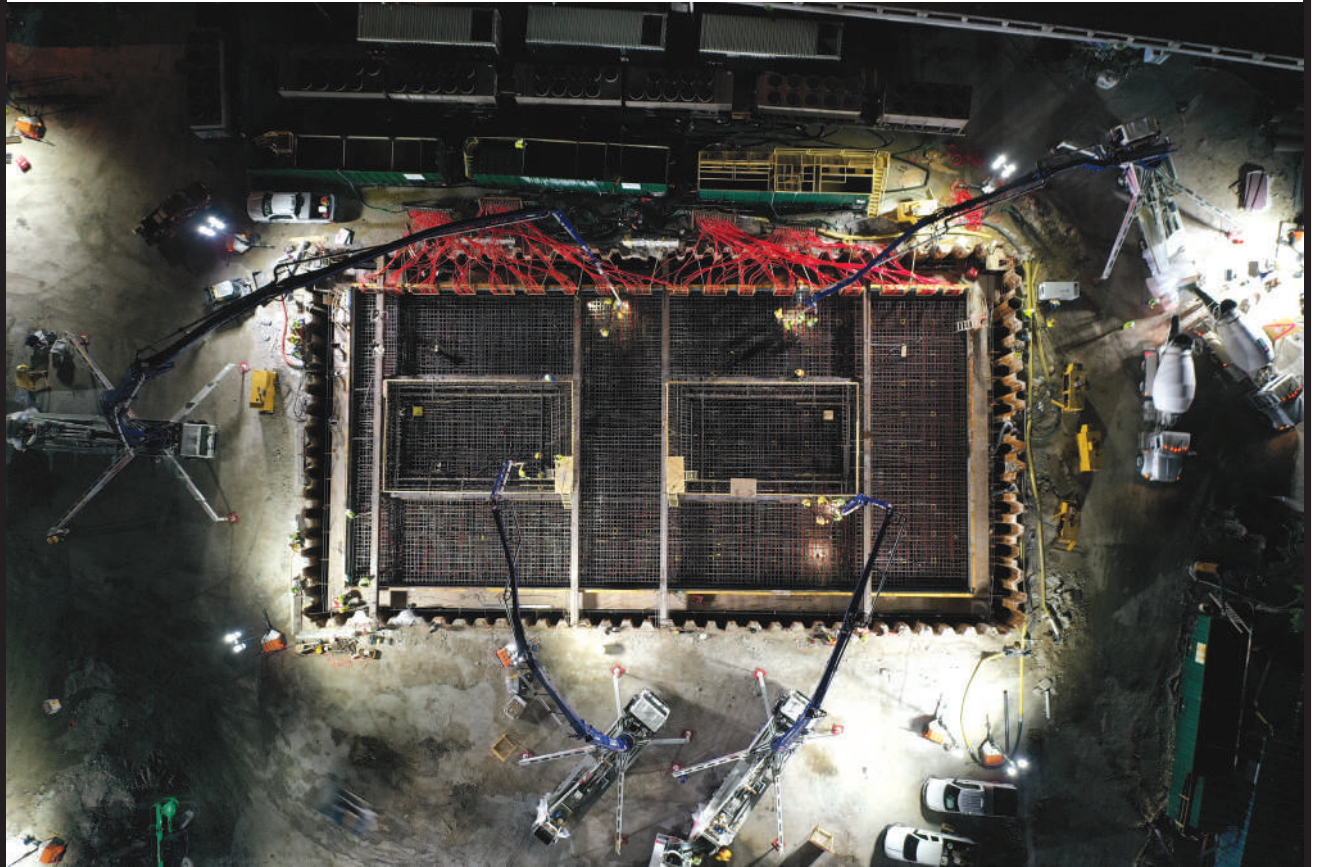
gies. The company recently entered the transportation design services market as a result of its acquisitions, he adds.

At CMTA, recent mergers and acquisitions have enabled the company to implement significant geographical expansion. The company became a portfolio firm for equity investor Blackstone in 2021.

“Within our family of companies, we can now help our clients create and raise funds for projects, provide them with high performance-based engineering design, and provide solutions to design, build, lease, operate and guarantee performance, including systems installation and construction man-



**Foundations** | By Jonathan Keller



Universal Engineering Sciences (No. 42) was part of the team that placed 5,000 cu yd of 8,000-psi concrete into what will be the center pier of the Miami Signature Bridge. The pour took 33 hours, and featured 1.7 million lb of rebar. The center pier will be the principle foundation for the bridge's six arches, the tallest of which is 330 ft. The bridge is part of the broader I-395/SR836/I-95 project. More than 30 acres of community space will be created under the bridge when completed.

agement,” explains Tony Hands, electrical engineer and vice president.

Outside of ENR’s Top 10, other factors are contributing to a growth in market share for firms.

A study group of industry veterans from Gerry Salontai of Verdantas, Rod Hoffman of Smith Hoffman Consulting, Colvin Matheson of Matheson Financial Partners and Paul Chinowsky, professor of civil engineering at the University of Colorado, Boulder, has been tracking the trend over the last four years, using data from the ENR Top 500, the U.S. Bureau of Labor Statistics, U.S. Sector Economic Statistics and interviews with over 150 C-suite executives.

“What we have found through interviews is that the very large/large and mid-sized are preferred by clients due to being part of their community and

being local—understanding local dynamics to get work done effectively,” the group says. The group defines ENR firms 11-100 as large and firms 101-500 as midsized. Firms not on the Top 500 list are defined as small.

They add that the largest firms also may be turning their attention to larger, programmatic contracts “that generate revenue over a period of years rather than months.” The group also sees the largest firms focusing their efforts outside of the U.S., as well as moving towards a more “transactional and economically driven approach.”

**People as a Priority**

A major part of the IIJA is navigating its stipulations for funding. The moment Congress passed the act, many firms found a need for scaling up their staffing

to simply provide assistance for helping clients understand opportunities available to them.

“The world has changed in many ways over the past few years, and if your organization has not changed with it, retaining talent will be very difficult,” says Sasaki CEO James Miner. There have been multiple studies that show work-life balance, wages and quality of work and culture all play a role in staff retention, adds Miner.

Where AECOM believes it sets itself apart is through a focus on shared success.

“On one hand, providing our people with challenging work on exciting, impactful projects while encouraging continuous learning and technical skills development,” explains president Lara Poloni. “On the other hand, driving career satisfaction, success and balance through competitive compensation, a growing benefits offering and a commitment to genuine workplace flexibility via our Freedom to Grow philosophy.”

These elements combined to drive both professional and organizational growth, she adds, but there is no one size fits all for recruitment.

Houston-based civil engineering firm DEC says it has filled most of its staffing requirements using typical recruiting methods.

But on the other end, SmithGroup says that it still has 150 positions to fill despite hiring more than 150 people in the last six months.

“Our challenge is not unique,” says president and managing partner Mike Medici. “Our workload continues to grow, which is a positive thing, but we must continue to find high-quality talent to fulfill our clients’ needs.”

He adds, “It may sound cliché, but we have found that our strongest selling point (and retention tool) is our culture.”

When the company culture is the right fit, firms find they don’t have to do much more to build dynamic teams. ■

DEI in Design | By Emell Adolphus

## A Critical Eye on Design



Aaron Betsky



Cruz Garcia

Virginia Gov. Glenn Youngkin (R) signed an executive order “ending the teaching of inherently divisive concepts, including critical race theory” in K-12 public education on his first day in office on Jan 17. The directive fell short of a promise to ban state agencies from teaching so-called divisive concepts, but Aaron Betsky, professor at Virginia Tech, warns that similar actions around the country could have grave consequences on the future of design education.

Design is divisive, says Betsky, who doesn’t teach critical race theory but history to help students learn how to create more inclusive spaces.

“The way that laws are worded more and more is that any discussion that makes people of any race feel guilt or angst or confusion about their legacy should not be allowed,” he says. “That’s absurd because then it’s almost impossible to have a historical discussion.”

Betsky adds to a larger collective of educators and organizations, such as Design As Protest and Designing Justice + Designing Spaces, around

the country that are aiming to add equity to how buildings and cities are designed. Doing this requires asking what is “good” architecture, design and why.

“We are living in a very diverse nation,” says Betsky. “Serving those populations as a design professional, you need to understand and be to some extent part of the legacy and discussions of those populations.”

Architect Cruz Garcia, an adjunct assistant professor at Columbia University Graduate School of Architecture, Planning and Preservation, co-founded the WAI Architecture Think Tank to improve access to materials that view the profession through the lens of diversity, equity and inclusion.

“We hope people can become really critical and think about other ways of worldmaking,” says Cruz.

The pandemic has been brutal on infrastructure systems, says Cruz. “For disenfranchised communities, it’s been very brutal,” he says. “So we can’t ignore the way our cities are built and the way our towns are accessed.” ■

### How To Read the Tables

#### KEY TO TYPE OF FIRM

**A** architect, **E** engineer, **EC** engineer-contractor, **AE** architect-engineer, **EA** engineer-architect, **ENV** environmental, **GE** geotechnical engineer, **L** landscape architect, **P** planner and **O** other. Other combinations are possible. Firms classified themselves.

**Companies** are ranked according to revenue for design services performed in 2021 in \$ millions (\*). Those with subsidiaries are indicated by (†). For information on subsidiaries and where each firm worked outside of the U.S., see [www.enr.com](http://www.enr.com). \*\*Firms not ranked last year. Some markets may not add up to 100% due to omission of “other” miscellaneous

market category and rounding. NA-Not available.

**General Building** as a category includes commercial buildings, offices, stores, educational facilities, government buildings, hospitals, medical facilities, hotels, apartments, housing, etc.

**Hazardous Waste** includes chemical and nuclear waste treatment, asbestos and lead abatement, etc.

**Industrial Process** comprises pulp and paper mills, steel mills, nonferrous metal refineries, pharmaceutical plants, chemical plants, food and other processing plants, etc.

**Manufacturing** includes auto, electronic assembly, textile plants, etc.

**Petroleum** includes refineries, petrochemical plants, offshore facilities, pipelines, etc.

**Power** comprises thermal and hydroelectric power plants, waste-to-energy plants, transmission lines, substations, cogeneration plants, etc.

**Sewerage / Solid Waste** includes sanitary and storm sewers, treatment plants, pumping plants, incinerators, industrial waste facilities, etc.

**Telecommunications** comprises transmission lines and cabling, towers and antennae, data centers, etc.

**Transportation** includes airports, bridges, roads, canals, locks, dredging, marine facilities, piers, railroads, tunnels, etc.

**Water Supply** includes dams, reservoirs, transmission pipelines, distribution mains, irrigation canals, desalination and potability treatment plants, pumping stations, etc.

RANK 2022	RANK 2021	FIRM	FIRM TYPE	2021 REVENUE \$ MIL.		GENERAL BUILDING	MANUFACTURING	POWER	WATER SUPPLY	SEWER / WASTE	INDUS. / PETROLEUM	TRANSPORTATION	HAZARDOUS WASTE	TELECOM
				TOTAL	INT'L									
1	1	JACOBS, Dallas, Texas†	EAC	10,691.3	3,582.0	9	7	5	10	7	12	27	20	4
2	2	AECOM, Dallas, Texas	EA	7,913.2	3,768.2	21	0	4	13	5	1	41	13	1
3	3	FLUOR, Irving, Texas†	EC	3,519.6	2,355.2	0	0	1	0	0	74	0	23	0
4	4	TETRA TECH INC., Pasadena, Calif.	E	3,296.0	979.0	9	1	8	42	12	2	5	21	0
5	6	HDR, Omaha, Neb.†	EA	2,477.1	373.1	20	0	9	10	11	1	44	1	3
6	7	WOOD, Houston, Texas	EC	2,349.8	735.4	4	6	8	3	3	55	10	11	0
7	8	WSP USA, New York, N.Y.	E	2,342.2	40.8	15	1	13	1	1	3	53	7	3
8	9	BURNS & MCDONNELL, Kansas City, Mo.†	EAC	2,126.4	108.9	11	2	40	3	3	16	9	5	9
9	10	STANTEC INC., Irvine, Calif.†	EA	1,774.0	0.0	27	1	11	13	10	7	26	2	0
10	15	KIMLEY-HORN, Raleigh, N.C.	O	1,507.7	5.3	48	0	5	3	5	0	34	0	5
11	12	HNTB COS., Kansas City, Mo.	EA	1,479.1	3.6	1	0	0	1	0	0	97	0	0
12	5	WORLEY, Houston, Texas†	EC	1,397.5	208.1	0	0	8	0	0	66	0	0	0
13	14	GENSLER, Los Angeles, Calif.	A	1,369.2	251.8	89	0	0	0	0	0	9	0	2
14	16	ARCADIS NORTH AMERICA/CALLISON RTKL, Highlands Ranch, Colo.	EA	1,361.1	163.7	20	0	0	13	6	0	8	54	0
15	11	PARSONS CORP., Centreville, Va.†	EC	1,259.5	335.8	6	0	1	3	0	1	74	14	1
16	13	BLACK & VEATCH, Overland Park, Kan.†	EC	1,226.7	253.0	9	0	49	12	13	6	0	1	9
17	19	TRC COS. INC., Windsor, Conn.	E	1,036.2	15.8	0	0	49	1	1	9	12	27	0
18	18	KIEWIT CORP., Omaha, Neb.†	EC	996.0	108.6	1	0	35	4	0	35	24	0	0
19	22	LEIDOS, Reston, Va.	E	968.2	15.2	0	6	30	0	0	0	0	64	0
20	17	SNC-LAVALIN INC., Tampa, Fla.†	O	951.1	0.0	8	4	6	6	0	4	45	19	0
21	24	TERRACON CONSULTANTS INC., Olathe, Kan.†	E	912.0	2.9	40	1	12	3	1	5	16	18	4
22	21	INTERTEK-PSI, Arlington Heights, Ill.†	EC	850.9	371.2	22	14	1	0	1	54	7	0	0
23	25	CDM SMITH, Boston, Mass.†	EC	790.5	144.2	0	0	0	32	28	0	25	14	0
24	27	NV5 GLOBAL INC., Hollywood, Fla.†	E	777.3	22.9	28	0	32	10	4	0	24	2	0
25	23	BECHTEL, Reston, Va.†	EC	772.0	297.0	0	0	4	0	0	46	3	38	8
26	26	EXP, Chicago, Ill.	EA	750.0	417.7	34	1	2	4	0	5	34	1	18
27	28	GHD INC., Irvine, Calif.†	O	690.3	263.6	13	0	1	15	15	3	13	35	0
28	31	MICHAEL BAKER INTERNATIONAL, Pittsburgh, Pa.†	EA	613.4	11.1	16	0	1	16	0	2	61	2	2
29	30	GANNETT FLEMING, Camp Hill, Pa.	EA	605.6	30.7	9	0	2	15	9	2	64	0	0
30	29	MOTT MACDONALD, Iselin, N.J.†	E	581.8	123.4	2	0	6	14	8	13	55	1	0
31	35	T.Y. LIN INTERNATIONAL, San Francisco, Calif.†	EA	581.8	283.7	14	0	0	0	3	0	81	0	0
32	33	POWER ENGINEERS INC., Hailey, Idaho	E	580.6	23.6	0	0	93	0	0	7	0	0	0
33	32	PERKINS&WILL, Chicago, Ill.†	A	572.5	126.0	92	0	0	0	0	0	7	0	0
34	36	SARGENT & LUNDY, Chicago, Ill.†	E	565.5	71.3	0	0	93	0	0	1	0	6	0
35	34	STV GROUP INC., New York, N.Y.†	EA	531.8	11.5	10	0	0	4	3	0	84	0	0
36	37	DEWBERRY, Fairfax, Va.†	EA	488.1	5.8	33	1	5	13	7	0	36	0	4
37	38	BROWN AND CALDWELL, Walnut Creek, Calif.†	E	453.6	0.0	0	0	0	19	62	0	0	19	0
38	40	ARUP, New York, N.Y.†	E	450.2	88.1	49	0	0	2	0	0	49	0	0
39	45	IBI GROUP INC., Columbus, Ohio	AE	442.0	311.1	65	2	0	0	4	0	11	0	0
40	42	GEOSYNTEC CONSULTANTS, Boca Raton, Fla.†	E	431.4	65.0	0	0	12	9	21	3	0	56	0
41	39	HOK, New York, N.Y.	AE	430.0	89.1	88	0	0	0	0	0	12	0	0
42	85	UNIVERSAL ENGINEERING SCIENCES, Orlando, Fla.†	GE	421.4	0.0	70	2	1	0	1	4	18	0	0
43	41	HKS, Dallas, Texas	A	400.5	40.5	100	0	0	0	0	0	0	0	0
44	44	S&B ENGINEERS AND CONSTRUCTORS LTD., Houston, Texas†	EC	399.7	5.1	0	0	1	0	0	86	13	0	0
45	46	KLEINFELDER, San Diego, Calif.†	EA	394.1	16.6	14	1	10	10	9	23	18	0	0
46	**	OBG PART OF RAMBOLL, Arlington, Va.	O	393.1	0.0	7	8	7	7	10	4	0	57	0
47	52	LANGAN, Parsippany, N.J.†	E	374.0	12.5	56	0	12	0	0	0	4	29	0
48	48	KCI TECHNOLOGIES INC., Sparks, Md.†	EC	368.3	0.0	12	0	11	3	8	0	43	2	18
49	47	RS&H INC., Jacksonville, Fla.†	EA	355.0	0.0	7	7	0	0	0	0	86	0	0
50	43	WILLDAN, Anaheim, Calif.	E	353.8	0.0	38	0	32	0	0	0	14	0	9



RANK 2022	RANK 2021	FIRM	FIRM TYPE	2021 REVENUE \$ MIL.		GENERAL BUILDING	MANUFACTURING	POWER	WATER SUPPLY	SEWER / WASTE	INDUS. / PETROLEUM	TRANSPORTATION	HAZARDOUS WASTE	TELECOM
				TOTAL	INT'L									
51	59	WOOLPERT INC., Dayton, Ohio†	O	352.2	45.2	11	0	3	1	5	0	18	0	0
52	49	SKIDMORE OWINGS & MERRILL, New York, N.Y.†	AE	350.3	118.6	82	0	0	0	0	0	18	0	0
53	65	CANNONDESIGN, New York City, N.Y.	AE	345.0	6.0	100	0	0	0	0	0	0	0	0
54	54	HAZEN AND SAWYER, New York, N.Y.	E	344.2	1.6	0	0	0	33	67	0	0	0	0
55	57	LJA ENGINEERING, Houston, Texas†	E	342.9	0.0	0	0	0	5	5	3	22	5	4
56	50	CAROLLO ENGINEERS INC., Walnut Creek, Calif.	E	340.5	0.0	0	0	0	39	61	0	0	0	0
57	55	HARGROVE ENGINEERS + CONSTRUCTORS, Mobile, Ala.†	EC	335.7	2.1	2	1	4	0	0	94	0	0	0
58	70	EN ENGINEERING LLC, Warrenton, Ill.†	E	334.0	3.0	0	2	72	0	1	16	0	0	8
59	73	SCS ENGINEERS, Long Beach, Calif.†	ENV	331.7	1.6	0	0	0	0	85	0	0	15	0
60	51	JOHNSON MIRMIRAN & THOMPSON INC. (JMT), Hunt Valley, Md.†	EA	328.7	0.0	3	0	0	0	4	0	93	0	0
61	53	CHA CONSULTING INC. (CHA), Albany, N.Y.†	EA	320.0	8.1	37	8	13	2	6	4	27	2	0
62	56	VHB, Watertown, Mass.	E	314.4	0.0	27	0	7	0	3	0	57	5	0
63	66	SMITHGROUP, Detroit, Mich.	AE	302.3	3.1	99	0	0	0	0	0	1	0	0
64	68	ENGINEERING CONSULTING SERVICES (ECS), Chantilly, Va.†	E	297.9	0.0	57	4	2	2	0	1	7	0	1
65	62	THORNTON TOMASETTI, New York, N.Y.	EA	290.0	66.2	79	0	3	0	0	2	15	0	1
66	**	FUGRO USA, Houston, Texas†	GE	280.9	20.1	5	0	48	7	0	22	12	0	0
67	101	CRB, Kansas City, Mo.	EA	280.3	30.8	0	0	0	0	0	100	0	0	0
68	103	FOTH, De Pere, Wis.†	E	276.7	0.0	0	0	0	0	5	77	14	4	0
69	67	PERKINS EASTMAN, New York, N.Y.†	A	274.7	68.8	100	0	0	0	0	0	0	0	0
70	64	GREENMAN-PEDERSEN INC. (GPI), Babylon, N.Y.†	E	274.7	0.0	14	0	4	1	1	2	73	0	0
71	77	IMEG CORP., Rock Island, Ill.	E	271.8	0.0	91	3	0	0	0	3	3	0	0
72	60	DLR GROUP, Minneapolis, Minn.	AE	268.7	16.5	100	0	0	0	0	0	0	0	0
73	61	RK&K, Baltimore, Md.	E	268.5	0.0	3	0	0	3	8	2	84	0	0
74	76	OLSSON INC., Lincoln, Neb.	E	263.2	0.0	53	0	10	7	3	0	16	1	7
75	71	WOODARD & CURRAN, Portland, Maine	E	262.9	0.0	2	1	0	22	50	2	1	22	0
76	69	CONSOR ENGINEERS, Chicago, Ill.†	E	257.5	4.4	0	0	0	18	0	0	82	0	0
77	83	TRANSYSTEMS, Kansas City, Mo.†	E	256.2	0.0	0	0	0	0	0	0	100	0	0
78	118	SALAS O'BRIEN, Irvine, Calif.†	EA	254.2	16.0	70	3	2	0	0	7	1	0	17
79	58	CARDNO INC., Englewood, Colo.	E	252.5	5.4	22	0	14	2	1	16	14	0	0
80	**	JENSEN HUGHES, Baltimore, Md.	E	251.7	89.0	55	2	7	0	0	13	4	4	2
81	105	ATWELL LLC, Southfield, Mich.†	E	251.0	0.0	37	0	45	0	8	9	1	0	0
82	99	MOFFATT & NICHOL, Long Beach, Calif.†	E	246.2	18.6	0	0	0	0	0	0	100	0	0
83	72	ZGF ARCHITECTS, Portland, Ore.	A	240.2	3.2	80	0	0	0	0	0	17	0	0
84	86	GRESHAM SMITH, Nashville, Tenn.	AE	236.6	0.0	46	11	0	0	12	2	30	0	0
85	109	COLLIERS ENGINEERING & DESIGN, Red Bank, N.J.	E	236.0	0.0	40	6	4	2	7	12	16	1	10
86	78	KPFF CONSULTING ENGINEERS, Seattle, Wash.	E	227.3	2.0	70	7	2	0	3	0	19	0	0
87	81	PAGE, Washington, D.C.†	AE	227.0	66.0	96	0	0	0	0	2	3	0	0
88	89	VOLKERT INC., Mobile, Ala.	E	222.4	0.0	8	0	13	0	2	0	77	0	0
89	123	IPS-INTEGRATED PROJECT SERVICES LLC, Blue Bell, Pa.†	EA	218.9	58.1	0	0	0	0	0	98	0	0	2
90	**	BARRY-WEHMILLER DESIGN GROUP, St. Louis, Mo.	O	213.0	0.0	0	0	0	0	0	98	0	2	0
91	97	MEAD & HUNT INC., Middleton, Wis.	EA	212.6	0.0	6	0	1	3	4	20	62	0	1
92	74	ENERCON, Kennesaw, Ga.†	E	212.2	0.0	0	0	90	0	0	3	0	4	2
93	84	GEI CONSULTANTS INC., Woburn, Mass.	E	207.1	15.5	12	0	10	29	3	1	13	28	0
94	88	CORGAN, Dallas, Texas	A	204.5	1.9	36	0	0	0	0	0	27	0	37
95	91	PENNONI, Philadelphia, Pa.	E	203.8	0.0	52	0	7	2	0	4	29	0	6
96	119	WARE MALCOMB, Irvine, Calif.	AE	203.2	15.9	36	27	0	0	0	37	0	0	0
97	102	HALFF ASSOCIATES INC., Richardson, Texas	EA	201.4	0.0	23	2	1	12	11	9	34	0	0
98	82	STANLEY CONSULTANTS, Muscatine, Iowa†	EA	200.0	36.0	24	0	23	11	3	6	30	0	0
99	90	DAVID EVANS ENTERPRISES INC., Portland, Ore.†	E	198.9	0.0	17	0	3	3	3	0	52	0	0
100	112	ALFRED BENESCH & CO., Chicago, Ill.	E	197.2	0.0	4	0	0	3	6	0	87	0	0



RANK 2022	2021	FIRM	FIRM TYPE	2021 REVENUE \$ MIL.		GENERAL BUILDING	MANUFACTURING	POWER	WATER SUPPLY	SEWER / WASTE	INDUS. / PETROLEUM	TRANSPORTATION	HAZARDOUS WASTE	TELECOM
				TOTAL	INT'L									
101	96	<b>CIVIL &amp; ENVIRONMENTAL CONSULTANTS INC.</b> , Pittsburgh, Pa.	E	196.3	0.0	28	0	7	3	18	22	1	17	0
102	106	<b>GARVER</b> , North Little Rock, Ark.	E	195.8	0.0	6	0	0	13	21	0	58	0	0
103	98	<b>SAM LLC</b> , Austin, Texas †	E	195.0	0.0	6	0	38	3	1	19	30	0	3
104	104	<b>FREESE AND NICHOLS INC.</b> , Fort Worth, Texas	E	195.0	0.0	3	0	0	37	36	2	15	0	0
105	116	<b>BGE INC.</b> , Houston, Texas	E	190.0	0.0	0	0	0	0	16	0	22	0	0
106	110	<b>BARR ENGINEERING CO.</b> , Minneapolis, Minn.	E	187.4	15.5	0	4	19	17	0	11	2	18	0
107	100	<b>POPULOUS</b> , Kansas City, Mo.	A	186.4	67.3	0	0	0	0	0	0	0	0	0
108	114	<b>BRAUN INTERTEC CORP.</b> , Minneapolis, Minn. †	GE	184.5	0.0	41	0	4	3	1	23	25	0	0
109	122	<b>WESTWOOD PROFESSIONAL SERVICES</b> , Minneapolis, Minn.	E	177.8	0.0	36	0	56	3	1	0	4	0	0
110	130	<b>HALEY &amp; ALDRICH INC.</b> , Burlington, Mass. †	E	176.8	0.0	23	0	5	0	0	0	12	60	0
111	79	<b>KOHN PEDERSEN FOX ASSOCIATES PC</b> , New York, N.Y.	A	176.2	129.7	99	0	0	0	0	0	1	0	0
112	107	<b>WHITMAN REQUARDT AND ASSOCIATES LLP</b> , Baltimore, Md.	EA	175.7	0.0	23	0	0	10	7	0	57	0	2
113	113	<b>MERRICK &amp; CO.</b> , Greenwood Village, Colo. †	EA	175.3	10.9	31	42	8	8	0	1	1	0	0
114	190	<b>ARDURRA GROUP INC.</b> , Tampa, Fla. †	E	172.7	0.0	8	0	0	34	32	0	25	0	0
115	115	<b>WISS JANNEY ELSTNER ASSOCIATES</b> , Northbrook, Ill.	EA	172.5	7.7	78	0	1	1	0	2	14	0	0
116	94	<b>HGA</b> , Minneapolis, Minn.	AE	172.0	1.5	96	3	2	0	0	0	0	0	0
117	131	<b>PAPE-DAWSON ENGINEERS INC.</b> , San Antonio, Texas	E	170.8	0.0	72	4	0	7	2	0	13	0	0
118	144	<b>BOWMAN CONSULTING GROUP</b> , Reston, Va.	E	170.1	0.0	42	0	13	7	6	10	14	0	6
119	121	<b>AFFILIATED ENGINEERS INC.</b> , Madison, Wis.	E	165.6	1.3	76	2	13	0	0	7	0	0	3
120	124	<b>S&amp;ME INC.</b> , Raleigh, N.C.	E	163.8	0.0	34	3	14	3	1	12	29	1	1
121	135	<b>TOWER ENGINEERING PROFESSIONALS</b> , Raleigh, N.C.	E	156.9	12.0	0	0	0	0	0	0	0	0	100
122	127	<b>SSEO GROUP</b> , Toledo, Ohio	EA	156.2	14.9	16	54	3	0	0	28	0	0	0
123	111	<b>PBK</b> , Houston, Texas	AE	155.2	0.0	100	0	0	0	0	0	0	0	0
124	139	<b>ULTEIG ENGINEERS INC.</b> , Fargo, N.D. †	E	152.9	2.5	0	0	85	0	1	0	12	0	0
125	128	<b>H.W. LOCHNER INC.</b> , Chicago, Ill.	E	151.7	0.0	0	0	0	0	0	0	100	0	0
126	125	<b>SWCA ENVIRONMENTAL CONSULTANTS</b> , Phoenix, Ariz.	ENV	151.5	0.0	8	0	51	5	1	20	6	1	0
127	129	<b>SIMPSON GUMPERTZ &amp; HEGER</b> , Waltham, Mass.	E	151.4	12.4	70	2	7	3	1	3	13	0	0
128	134	<b>MORRISON HERSHFIELD</b> , Atlanta, Ga. †	EA	151.3	106.3	32	0	1	2	4	0	35	0	25
129	140	<b>HENDERSON ENGINEERS INC.</b> , Lenexa, Kan. †	E	149.4	0.0	99	0	0	0	0	0	1	0	0
130	126	<b>GZA</b> , Norwood, Mass. †	ENV	149.3	0.0	28	16	7	9	1	5	10	10	0
131	142	<b>WESTON &amp; SAMPSON</b> , Reading, Mass. †	E	146.4	0.0	0	0	5	24	33	2	11	9	0
132	150	<b>BOLTON &amp; MENK INC.</b> , Mankato, Minn. †	E	144.8	0.0	14	0	0	9	10	0	32	0	0
133	120	<b>EA ENGINEERING SCIENCE AND TECH. INC.</b> , Hunt Valley, Md.	ENV	144.7	0.0	0	0	8	8	18	15	6	45	0
134	157	<b>AMERICAN STRUCTUREPOINT</b> , Indianapolis, Ind.	EA	144.4	0.0	21	5	0	6	9	0	57	0	2
135	163	<b>LABELLA ASSOCIATES DPC</b> , Rochester, N.Y. †	EA	143.8	2.3	14	0	8	13	25	6	10	24	0
136	141	<b>NORR</b> , Chicago, Ill. †	AE	142.4	76.2	94	0	0	0	0	0	6	0	0
137	151	<b>TIMMONS GROUP</b> , Richmond, Va.	E	135.5	0.0	64	2	15	2	3	0	11	0	2
138	143	<b>MESA ASSOCIATES INC.</b> , Madison, Ala.	E	135.0	0.0	0	0	96	0	0	4	0	0	0
139	133	<b>SHORT ELLIOTT HENDRICKSON INC. (SEH)</b> , St. Paul, Minn.	EA	134.8	0.0	25	0	0	8	11	0	55	0	0
140	138	<b>PARAMETRIX</b> , Seattle, Wash.	E	134.7	0.0	6	0	0	8	12	1	64	1	4
141	137	<b>DLZ CORP.</b> , Columbus, Ohio †	EA	134.2	12.6	16	1	11	12	15	9	33	2	0
142	165	<b>FLAD ARCHITECTS</b> , Madison, Wis. †	AE	132.8	0.0	100	0	0	0	0	0	0	0	0
143	156	<b>QUIDDITY ENGINEERING</b> , Bellaire, Texas	E	132.5	0.0	49	0	0	10	17	0	16	0	0
144	136	<b>PSOMAS</b> , Culver City, Calif.	E	129.8	0.0	27	0	1	12	7	6	44	2	0
145	146	<b>GAI CONSULTANTS INC.</b> , Homestead, Pa. †	E	129.3	0.0	11	0	50	2	1	2	33	1	0
146	215	<b>CONGRUEX</b> , Boulder, Colo. †	E	129.0	0.0	0	0	0	0	0	0	0	0	100
147	132	<b>WALTER P MOORE</b> , Houston, Texas	E	127.1	3.3	72	0	0	7	2	0	20	0	0
148	145	<b>EYP ARCHITECTURE &amp; ENGINEERING</b> , Albany, N.Y.	AE	126.5	0.0	98	0	0	0	0	0	0	0	0
149	168	<b>ELECTRICAL CONSULTANTS INC.</b> , Billings, Mont. †	E	125.4	0.0	0	0	90	0	0	1	0	0	0
150	160	<b>HARDESTY &amp; HANOVER LLC</b> , New York, N.Y.	E	124.8	1.5	0	0	0	0	0	0	100	0	0

#69

PERKINS EASTMAN, celebrating its 40th anniversary in 2022, merged with Kliment Halsband Architects, celebrating its 50th.

RANK 2022	RANK 2021	FIRM	FIRM TYPE	2021 REVENUE \$ MIL.		GENERAL BUILDING	MANUFACTURING	POWER	WATER SUPPLY	SEWER / WASTE	INDUS. / PETROLEUM	TRANSPORTATION	HAZARDOUS WASTE	TELECOM
				TOTAL	INT'L									
151	108	PGAL, Houston, Texas	AE	124.1	0.0	44	0	0	0	0	0	56	0	0
152	152	GPD GROUP, Akron, Ohio	AE	123.9	0.0	39	0	15	0	8	5	14	0	18
153	162	GHAFFARI ASSOCIATES LLC, Dearborn, Mich.	EA	121.5	11.0	13	76	0	0	0	0	11	0	0
154	353	BEAM LONGEST & NEFF, Indianapolis, Ind.†	E	120.5	76.5	16	0	0	6	0	0	78	0	0
155	158	BL COS. INC., Meriden, Conn.	EA	116.1	0.0	77	0	3	0	0	6	12	1	0
156	155	BKF ENGINEERS, Redwood City, Calif.	E	115.1	0.0	66	2	0	2	4	1	24	0	0
157	154	COFFMAN ENGINEERS INC., Seattle, Wash.†	E	115.0	2.4	44	0	6	0	0	27	0	0	0
158	80	POND, Peachtree Corners, Ga.	EA	113.7	4.7	34	3	0	4	0	45	14	0	0
159	149	MCKIM & CREED INC., Raleigh, N.C.	O	111.5	0.0	3	15	14	14	17	11	16	0	0
160	164	HUITT-ZOLLARS INC., Dallas, Texas	EA	110.3	0.0	23	0	0	12	18	0	46	0	0
161	148	SYSKA HENNESSY GROUP, New York, N.Y.†	E	110.2	4.8	53	2	1	0	0	1	15	0	27
162	188	HR GREEN INC., Cedar Rapids, Iowa	E	108.2	0.0	19	0	0	6	19	1	40	0	5
163	166	THE BURKE GROUP LTD., Rosemont, Ill.†	E	107.9	0.0	19	9	1	9	5	2	9	0	0
164	185	WSB, Golden Valley City, Minn.	E	106.3	0.0	7	0	3	9	13	22	44	1	0
165	159	RABA KISTNER INC., San Antonio, Texas†	E	104.9	1.2	35	5	0	2	0	0	57	0	0
166	294	HBK ENGINEERING LLC, Chicago, Ill.	E	103.3	0.0	1	0	37	0	0	6	0	0	49
167	175	WGI INC., West Palm Beach, Fla.	EA	103.0	0.0	58	0	0	2	1	0	39	0	0
168	93	LEO A DALY, Omaha, Neb.	AE	103.0	16.0	90	5	0	0	0	0	4	0	0
169	172	HANSON PROFESSIONAL SERVICES INC., Springfield, Ill.	E	102.5	2.2	14	0	9	3	3	2	68	0	0
170	181	WUNDERLICH-MALEC ENGINEERING INC., Eden Prairie, Minn.	EA	101.8	0.0	5	39	5	0	0	49	0	0	0
171	171	BARGE DESIGN SOLUTIONS, Nashville, Tenn.†	EA	101.2	0.0	17	14	0	13	12	1	18	3	8
172	170	LPA INC., Irvine, Calif.	AE	100.7	0.0	100	0	0	0	0	0	0	0	0
173	178	STRAND ASSOCIATES INC., Madison, Wis.	E	100.4	0.0	1	0	0	14	36	6	38	0	0
174	**	DCCM, Houston, Texas†	E	100.0	0.0	0	0	12	36	24	0	26	0	2
175	169	HASKELL, Jacksonville, Fla.†	O	99.7	12.6	15	18	0	0	0	54	13	0	0
176	174	VANDERWEIL ENGINEERS, Boston, Mass.	E	99.4	0.0	56	0	15	0	0	0	0	0	28
177	240	CMTA INC., Prospect, Ky.	EC	99.0	0.0	97	0	0	0	0	2	1	0	0
178	210	LS3P, Charleston, S.C.	A	97.7	0.0	98	0	0	0	0	0	2	0	0
179	200	WADE TRIM, Detroit, Mich.†	E	97.0	0.0	0	0	1	13	49	15	14	0	0
180	226	DENNIS GROUP, Springfield, Mass.†	EC	96.8	13.5	0	0	0	0	0	100	0	0	0
181	209	ELKUS MANFREDI ARCHITECTS, Boston, Mass.	A	96.5	0.0	100	0	0	0	0	0	0	0	0
182	308	RMA GROUP, Rancho Cucamonga, Calif.†	GE	96.1	0.0	28	0	2	1	2	1	65	0	0
183	189	WILSON & CO. INC. ENGINEERS & ARCHITECTS, Albuquerque, N.M.	EA	95.9	0.0	8	0	2	7	4	2	71	0	0
184	176	COBB FENDLEY & ASSOCIATES INC., Houston, Texas	E	95.6	0.0	0	0	3	3	3	4	52	0	34
185	218	KTGY ARCHITECTURE + PLANNING, Irvine, Calif.	O	94.7	0.0	100	0	0	0	0	0	0	0	0
186	184	TECTONIC ENG'G CONSULT. GEOLOGISTS & SURVEYORS, Mountainville, N.Y.	E	93.3	0.0	32	3	4	0	1	0	43	0	17
187	192	NINYO & MOORE GEOTECH. & ENVIRO. SCIENCES, San Diego, Calif.	GE	93.0	0.0	42	0	6	11	12	1	18	7	3
188	87	ZACHRY GROUP, San Antonio, Texas†	EC	93.0	1.0	0	0	40	0	0	60	0	0	0
189	203	SCHNABEL ENGINEERING, Glen Allen, Va.†	GE	92.9	0.0	21	0	2	49	3	0	14	3	0
190	207	FISHBECK, Grand Rapids, Mich.	EA	92.9	0.0	19	5	0	7	15	3	49	3	0
191	238	UNITED ENGINEERS & CONSTRUCTORS INC., Mt. Laurel, N.J.†	EC	91.6	0.0	0	0	100	0	0	0	0	0	0
192	197	AO ARCHITECTS, Orange, Calif.	A	91.1	1.9	100	0	0	0	0	0	0	0	0
193	202	GOODWYN MILLS AND CAWOOD INC., Montgomery, Ala.	AE	90.8	0.0	47	4	0	9	6	1	13	0	0
194	161	EWINGCOLE, Philadelphia, Pa.	AE	90.6	0.0	54	0	0	0	0	46	0	0	0
195	256	VERDANTAS, Dublin, Ohio†	ENV	90.1	0.0	8	0	4	18	8	0	3	58	0
196	250	DGA PLANNING   ARCHITECTURE   INTERIORS, Mountain View, Calif.	A	88.7	0.0	96	0	0	0	0	0	0	0	4
197	206	NEEL-SCHAFFER INC., Jackson, Miss.†	E	88.6	0.0	14	0	0	5	7	0	50	4	3
198	227	COWI NORTH AMERICA, Seattle, Wash.	E	88.2	19.5	0	0	5	0	0	0	95	0	0
199	167	INTEGRAL GROUP, Oakland, Calif.	E	87.5	58.5	95	1	0	0	0	0	1	0	0
200	199	SMITH SECKMAN REID INC., Nashville, Tenn.	E	87.1	1.5	69	8	0	5	2	1	12	1	0

RANK 2022	2021	FIRM	FIRM TYPE	2021 REVENUE \$ MIL.		GENERAL BUILDING	MANUFACTURING	POWER	WATER SUPPLY	SEWER / WASTE	INDUS. / PETROLEUM	TRANSPORTATION	HAZARDOUS WASTE	TELECOM
				TOTAL	INT'L									
201	198	<b>GREELEY AND HANSEN</b> , Chicago, Ill. †	E	86.5	0.0	0	0	0	15	85	0	0	0	0
202	195	<b>CLARK NEXSEN</b> , Virginia Beach, Va. †	AE	85.6	3.5	79	0	0	0	0	3	16	0	1
203	187	<b>HED</b> , Southfield, Mich.	AE	85.5	0.0	91	0	0	0	0	0	0	0	9
204	180	<b>DOWL</b> , Redmond, Wash.	E	85.5	0.0	16	0	0	18	2	2	61	0	0
205	183	<b>BURGESS &amp; NIPLÉ INC.</b> , Columbus, Ohio	EA	84.7	0.0	10	0	0	8	27	0	49	1	0
206	201	<b>PARKHILL</b> , Lubbock, Texas	AE	84.4	0.0	52	0	0	6	17	0	18	0	0
207	179	<b>KLJ</b> , Bismarck, N.D.	E	84.0	0.0	2	0	2	2	1	14	66	0	7
208	173	<b>HMC ARCHITECTS</b> , Ontario, Calif.	A	83.7	0.0	100	0	0	0	0	0	0	0	0
209	208	<b>H2M ARCHITECTS + ENGINEERS</b> , Melville, N.Y. †	EA	83.1	0.0	48	0	5	28	6	1	0	11	0
210	224	<b>OHM ADVISORS</b> , Livonia, Mich.	EA	83.1	0.0	14	0	0	12	14	0	51	1	0
211	214	<b>RSP</b> , Minneapolis, Minn.	AE	82.7	0.0	88	11	0	0	0	0	0	0	0
212	191	<b>HUCKABEE</b> , Fort Worth, Texas	AE	82.6	0.0	100	0	0	0	0	0	0	0	0
213	219	<b>TIGHE &amp; BOND INC.</b> , Westfield, Mass.	E	82.1	0.0	23	0	6	26	22	0	7	16	0
214	216	<b>PATRICK ENGINEERING INC.</b> , Lisle, Ill.	E	81.8	0.0	0	0	30	2	5	10	40	0	4
215	223	<b>BCC ENGINEERING INC.</b> , Miami, Fla. †	E	81.1	3.8	4	0	0	0	0	0	96	0	0
216	233	<b>INFRASTRUCTURE CONSULTING &amp; ENGINEERING PLLC</b> , Columbia, S.C.	E	81.0	0.0	0	0	0	0	0	0	100	0	0
217	204	<b>HORD COPLAN MACHT</b> , Baltimore, Md.	A	80.3	0.0	100	0	0	0	0	0	0	0	0
218	254	<b>CUSHING TERRELL</b> , Billings, Mont.	EA	79.8	1.1	100	0	0	0	0	0	0	0	0
219	212	<b>CRAWFORD MURPHY &amp; TILLY INC.</b> , Springfield, Ill.	EA	79.3	0.0	1	0	0	8	11	0	79	0	1
220	220	<b>FARNSWORTH GROUP INC.</b> , Bloomington, Ill.	EA	79.1	0.0	48	9	3	3	8	15	13	0	0
221	419	<b>THE YATES COS. INC.</b> , Philadelphia, Miss. †	EC	78.9	0.0	0	0	0	0	0	100	0	0	0
222	225	<b>GEOENGINEERS INC.</b> , Redmond, Wash.	E	78.8	0.0	29	0	2	11	2	16	10	19	0
223	**	<b>KENNEDY/JENKS CONSULTANTS INC.</b> , San Francisco, Calif.	E	78.5	0.0	0	7	0	45	32	5	4	7	0
224	253	<b>WOOD RODGERS INC.</b> , Sacramento, Calif.	E	78.2	0.0	5	0	0	25	3	0	26	0	0
225	153	<b>PRIMORIS</b> , Dallas, Texas	E	76.9	7.2	0	0	54	0	0	46	0	0	0
226	196	<b>MCCORMICK TAYLOR INC.</b> , Philadelphia, Pa. †	E	76.5	0.0	0	0	0	0	0	0	100	0	0
227	221	<b>A. MORTON THOMAS AND ASSOCIATES INC.</b> , Rockville, Md.	E	76.4	0.0	3	0	0	4	1	0	92	0	0
228	217	<b>DRMP INC.</b> , Orlando, Fla.	E	76.2	0.0	3	0	0	0	0	0	97	0	0
229	232	<b>STUDIOS ARCHITECTURE</b> , Washington, D.C.	A	76.2	14.0	100	0	0	0	0	0	0	0	0
230	273	<b>CORE STATES GROUP</b> , Duluth, Ga. †	EA	76.0	0.0	78	4	8	0	0	10	0	0	0
231	324	<b>NETWORK CONNEX</b> , Downers Grove, Ill. †	E	76.0	0.0	0	0	0	0	0	0	0	0	100
232	246	<b>SHIVE-HATTERY</b> , Cedar Rapids, Iowa †	AE	75.7	0.0	59	19	1	3	1	0	14	0	0
233	229	<b>COOPER CARRY</b> , Atlanta, Ga.	A	74.4	0.0	100	0	0	0	0	0	0	0	0
234	299	<b>CESO INC.</b> , Miamisburg, Ohio	AE	73.9	0.0	97	0	0	0	0	0	3	0	0
235	228	<b>BALLINGER</b> , Philadelphia, Pa.	AE	73.0	0.0	100	0	0	0	0	0	0	0	0
236	259	<b>SASAKI</b> , Boston, Mass.	O	73.0	14.4	46	0	0	0	0	0	0	0	0
237	222	<b>SOLOMON CORDWELL BUENZ (SCB)</b> , Chicago, Ill.	A	72.4	0.0	91	0	0	0	0	0	9	0	0
238	234	<b>SHANNON &amp; WILSON INC.</b> , Seattle, Wash.	GE	72.1	2.2	3	0	1	3	2	3	70	0	0
239	274	<b>NOVA ENGINEERING &amp; ENVIRONMENTAL LLC</b> , Kennesaw, Ga.	E	71.7	0.0	46	11	9	0	0	0	22	5	0
240	241	<b>J-U-B ENGINEERS INC.</b> , Meridian, Idaho †	E	71.0	0.0	0	0	0	0	31	0	30	0	39
241	231	<b>BURNS ENGINEERING INC.</b> , Philadelphia, Pa.	E	70.7	0.0	14	0	4	0	3	0	79	0	0
242	235	<b>TLC ENGINEERING SOLUTIONS INC.</b> , Orlando, Fla.	E	70.4	0.0	96	0	0	0	0	0	3	0	0
243	279	<b>ENSAFE INC.</b> , Memphis, Tenn.	E	70.0	0.0	10	16	0	8	2	0	0	50	1
244	262	<b>AKRF INC.</b> , New York, N.Y.	E	69.8	0.0	23	0	7	13	0	0	36	21	0
245	251	<b>MARK THOMAS</b> , San Jose, Calif.	E	69.6	0.0	0	0	8	1	8	0	83	0	0
246	267	<b>OTAK INC.</b> , Portland, Ore. †	EA	69.1	3.1	48	0	0	8	0	0	44	0	0
247	249	<b>MIDDOUGH INC.</b> , Cleveland, Ohio	EA	69.0	0.0	6	8	6	0	0	80	0	0	0
248	286	<b>GENESIS AEC</b> , Blue Bell, Pa.	EA	68.5	0.0	0	0	0	0	0	99	0	0	1
249	**	<b>WRNS STUDIO</b> , San Francisco, Calif.	A	68.0	0.0	100	0	0	0	0	0	0	0	0
250	306	<b>ISG</b> , Mankato, Minn. †	EA	67.6	0.0	54	7	0	10	8	13	4	0	5 †

#118

BOWMAN will serve as a partner for Drive Clean Rural USA, a DOE-funded project aiming to make alternative fuels more accessible in rural areas.

RANK 2022	RANK 2021	FIRM	FIRM TYPE	2021 REVENUE \$ MIL.		GENERAL BUILDING	MANUFACTURING	POWER	WATER SUPPLY	SEWER / WASTE	INDUS. / PETROLEUM	TRANSPORTATION	HAZARDOUS WASTE	TELECOM
				TOTAL	INT'L									
251	237	THE S/L/A/M COLLABORATIVE, Glastonbury, Conn.†	AE	67.3	0.0	100	0	0	0	0	0	0	0	0
252	255	TWINING INC., Long Beach, Calif.	GE	67.0	0.0	69	0	0	5	2	0	25	0	0
253	269	GEO-LOGIC ASSOCIATES INC., Ontario, Calif.†	ENV	67.0	1.6	0	0	0	8	18	6	0	1	0
254	257	ANVIL CORP., Bellingham, Wash.†	E	66.4	0.0	0	5	2	0	0	93	0	0	0
255	**	CDI ENGINEERING SOLUTIONS, Houston, Texas	E	66.0	0.0	3	0	2	0	0	70	9	0	0
256	271	CPL, Fairport, N.Y.	AE	65.9	0.0	83	0	0	4	4	0	9	0	0
257	194	BRPH COS. INC., Melbourne, Fla.†	EA	65.9	1.6	29	26	0	0	0	0	0	0	0
258	280	ESP ASSOCIATES INC., Fort Mill, S.C.†	E	65.2	0.0	48	0	8	0	0	0	30	0	0
259	277	MCMILLAN PAZDAN SMITH LLC, Greenville, S.C.	A	65.1	0.0	91	8	0	0	0	0	1	0	0
260	275	REMINGTON & VERNICK ENGINEERS INC., Cherry Hill, N.J.	E	65.0	0.0	6	0	0	8	10	0	13	0	0
261	236	PRIME AE GROUP INC., Baltimore, Md.†	EA	65.0	0.0	26	0	0	13	7	0	54	0	0
262	310	P2S INC., Long Beach, Calif.	E	64.8	0.0	89	4	0	1	0	2	4	0	0
263	252	JAROS BAUM & BOLLES, New York, N.Y.	E	64.4	0.0	93	0	0	0	0	0	2	0	5
264	261	FEHR & PEERS, Walnut Creek, Calif.	E	64.3	0.0	0	0	0	0	0	0	100	0	0
265	230	WATG, Irvine, Calif.	A	64.1	49.3	100	0	0	0	0	0	0	0	0
266	303	EUA (EPPSTEIN UHEN ARCHITECTS INC.), Milwaukee, Wis.	A	64.0	0.0	92	7	0	0	0	1	0	0	0
267	296	BAXTER & WOODMAN INC., Crystal Lake, Ill.†	E	63.9	0.0	0	0	0	34	37	0	25	0	0
268	244	CO ARCHITECTS, Los Angeles, Calif.	A	63.7	0.0	100	0	0	0	0	0	0	0	0
269	247	T&M ASSOCIATES, Middletown, N.J.†	E	63.7	0.0	6	0	3	14	15	3	26	0	0
270	260	LITTLE DIVERSIFIED ARCHITECTURAL CONSULTING INC., Charlotte, N.C.	AE	63.2	0.0	100	0	0	0	0	0	0	0	0
271	281	VLK ARCHITECTS INC., Fort Worth, Texas	A	63.0	0.0	100	0	0	0	0	0	0	0	0
272	268	ROSS & BARUZZINI INC., St. Louis, Mo.	E	62.3	4.2	64	0	3	0	0	3	27	0	3
273	313	HART HOWERTON, New York, N.Y.†	O	62.1	7.4	100	0	0	0	0	0	0	0	0
274	182	CUNNINGHAM, Minneapolis, Minn.	A	62.1	0.0	100	0	0	0	0	0	0	0	0
275	242	WALKER CONSULTANTS, Tampa, Fla.	EA	61.6	0.0	85	0	0	0	0	0	6	0	0
276	422	ALFATECH CONSULTING ENGINEERS INC., San Jose, Calif.	E	61.3	0.0	55	0	0	0	0	0	0	0	45
277	266	NAC ARCHITECTURE, Spokane, Wash.	A	60.8	0.0	100	0	0	0	0	0	0	0	0
278	265	EMH&T, New Albany, Ohio	E	60.6	0.0	71	0	0	3	4	0	22	0	0
279	276	TKDA, Saint Paul, Minn.†	EA	60.6	0.0	9	15	4	1	5	4	62	0	0
280	243	WOLD ARCHITECTS AND ENGINEERS, Saint Paul, Minn.†	AE	60.5	0.0	100	0	0	0	0	0	0	0	0
281	321	MOODY NOLAN, Columbus, Ohio	A	60.2	0.0	95	0	0	0	0	0	5	0	0
282	330	E4H ENVIRONMENTS FOR HEALTH ARCHITECTURE, Dallas, Texas	A	60.1	0.0	100	0	0	0	0	0	0	0	0
283	258	AKF GROUP, New York, N.Y.	E	60.0	0.0	98	0	0	0	0	1	1	0	0
284	278	ORBITAL ENGINEERING INC., Pittsburgh, Pa.	E	60.0	0.0	0	2	17	0	2	33	5	0	42
285	293	BARTON & LOGUIDICE DPC, Liverpool, N.Y.†	E	59.7	0.0	3	1	2	15	37	1	25	6	0
286	**	NORTHEAST-WESTERN ENERGY SYSTEMS, Philadelphia, Pa.	O	59.7	0.0	0	0	100	0	0	0	0	0	0
287	245	SYSTRA USA, New York, N.Y.†	EC	59.4	3.1	0	0	0	0	0	0	100	0	0
288	335	MCADAMS, Durham, N.C.	E	59.4	0.0	86	0	4	5	0	3	2	0	0
289	305	SME, Plymouth, Mich.	E	59.3	0.0	46	13	8	2	2	8	20	0	0
290	270	MOSELEY ARCHITECTS, Richmond, Va.	AE	58.4	0.0	100	0	0	0	0	0	0	0	0
291	291	ROBERT A.M. STERN ARCHITECTS, New York, N.Y.	A	58.3	11.2	100	0	0	0	0	0	0	0	0
292	317	WALDEMAR S. NELSON AND CO. INC., New Orleans, La.	EA	58.0	29.0	0	0	4	0	0	43	3	1	0
293	377	GBA (GEORGE BUTLER ASSOCIATES), Lenexa, Kan.†	EC	58.0	0.0	33	0	0	0	17	21	28	2	0
294	**	RMF ENGINEERING INC., Baltimore, Md.	E	58.0	0.0	43	14	43	0	0	0	0	0	0
295	289	BARTLETT & WEST INC., Topeka, Kan.†	E	57.7	0.0	12	0	0	19	18	0	52	0	0
296	298	DESIMONE CONSULTING ENGINEERS, New York, N.Y.	E	57.1	2.2	95	0	0	0	0	0	2	0	2
297	287	LARSON DESIGN GROUP INC., Williamsport, Pa.	EA	57.0	0.0	35	0	0	2	4	6	41	0	0
298	248	BURROW GLOBAL LLC, Houston, Texas†	EA	57.0	0.0	0	0	0	0	0	97	0	0	0
299	282	KISINGER CAMPO & ASSOCIATES CORP., Tampa, Fla.	E	56.1	0.0	0	0	0	0	0	0	100	0	0
300	283	RCM TECHNOLOGIES INC., Pennsauken, N.J.†	EA	55.6	15.2	3	0	55	0	0	18	25	0	0



RANK 2022	2021	FIRM	FIRM TYPE	2021 REVENUE \$ MIL.		GENERAL BUILDING	MANUFACTURING	POWER	WATER SUPPLY	SEWER / WASTE	INDUS. / PETROLEUM	TRANSPORTATION	HAZARDOUS WASTE	TELECOM
				TOTAL	INT'L									
301	284	ME ENGINEERS, Golden, Colo.†	E	55.5	10.0	99	0	0	0	0	0	1	0	0
302	300	MSA PROFESSIONAL SERVICES, Baraboo, Wis.	EA	55.5	0.0	16	0	0	15	33	0	30	4	0
303	272	SRF CONSULTING GROUP INC., Minneapolis, Minn.	E	55.1	0.0	0	0	0	0	0	0	100	0	0
304	**	HLW, New York, N.Y.	O	55.0	6.0	100	0	0	0	0	0	0	0	0
305	205	HUMPHREYS & PARTNERS ARCHITECTS, Dallas, Texas†	A	55.0	0.0	100	0	0	0	0	0	0	0	0
306	328	MS CONSULTANTS INC., Columbus, Ohio	EA	54.9	0.0	10	0	0	5	5	0	0	0	0
307	297	D'AMATO CONVERSANO INC. DBA DCI ENGINEERS, Seattle, Wash.	E	54.3	0.0	91	0	0	0	0	6	2	0	1
308	316	COLLINS ENGINEERS INC., Chicago, Ill.	E	53.7	0.0	6	0	1	1	1	1	91	0	0
309	380	HUNT GUILLOT & ASSOCIATES LLC, Ruston, La.	E	53.5	0.0	0	1	4	0	0	94	0	0	0
310	315	MARTIN/MARTIN INC., Lakewood, Colo.†	E	53.2	0.0	52	0	0	2	6	12	21	0	1
311	311	AYERS SAINT GROSS, Baltimore, Md.	A	52.6	8.5	100	0	0	0	0	0	0	0	0
312	**	LOCKWOOD ANDREWS & NEWNAM INC., Houston, Texas	EA	52.6	0.0	2	0	0	21	43	0	34	0	0
313	292	QUINN EVANS, Ann Arbor, Mich.	A	52.4	0.0	92	0	0	0	0	0	1	0	0
314	**	BSI ENGINEERING, Cincinnati, Ohio	EA	52.4	0.0	2	41	0	0	0	57	0	0	0
315	347	DRAPER ADEN ASSOCIATES INC., Richmond, Va.†	E	52.0	0.0	38	10	25	3	10	10	2	0	3
316	318	WRIGHT-PIERCE, Andover, Mass.	E	52.0	0.0	0	0	0	19	76	1	4	0	0
317	**	SMMA I SYMMES MAINI & MCKEE ASSOCIATES, Cambridge, Mass.	AE	51.7	0.0	100	0	0	0	0	0	0	0	0
318	314	AYRES, Eau Claire, Wis.	EA	51.7	0.0	8	0	0	15	6	0	33	0	2
319	**	MATRIX NEW WORLD ENGINEERING, Florham Park, N.J.	E	51.5	0.0	10	5	20	10	10	5	30	10	0
320	304	THE MANNIK & SMITH GROUP INC., Maumee, Ohio	E	51.5	0.0	19	16	5	6	10	10	29	4	2
321	**	DEGENKOLB ENGINEERS, San Francisco, Calif.	E	50.5	0.0	100	0	0	0	0	0	0	0	0
322	**	ENGLAND-THIMS & MILLER INC., Jacksonville, Fla.†	E	50.4	0.0	76	0	2	0	0	0	22	0	0
323	**	R. S. MOWERY & SONS INC., Mechanicsburg, Pa.	EA	50.0	0.0	100	0	0	0	0	0	0	0	0
324	**	SHEPLEY BULFINCH, Boston, Mass.	A	49.9	0.0	100	0	0	0	0	0	0	0	0
325	348	MANHARD CONSULTING LTD., Lincolnshire, Ill.†	E	49.9	0.0	99	0	0	0	0	0	0	0	0
326	358	GEOCON, San Diego, Calif.	GE	49.6	0.0	71	2	1	2	1	6	16	0	1
327	339	KIER & WRIGHT, Santa Clara, Calif.	E	49.5	0.0	89	0	3	0	8	0	0	0	1
328	309	FUSS & O'NEILL INC., Manchester, Conn.	E	49.5	0.0	21	4	2	10	11	10	22	6	0
329	336	HILLIS-CARNES ENGINEERING ASSOCIATES INC., Annapolis Junction, Md.	E	49.5	0.0	100	0	0	0	0	0	0	0	0
330	264	RETTEW ASSOCIATES INC., Lancaster, Pa.†	E	49.1	0.0	22	9	9	0	6	32	9	0	0
331	319	PS&S, Warren, N.J.	EA	48.8	0.0	38	0	18	1	11	29	2	0	0
332	**	WITHERSRAVENEL INC., Cary, N.C.	EC	48.5	0.0	51	0	0	5	14	0	2	0	0
333	312	MORRISON-MAIERLE INC., Helena, Mont.	E	47.8	0.0	21	0	0	6	19	4	30	0	0
334	333	THOMPSON ENGINEERING, Mobile, Ala.	EA	47.7	0.0	13	6	11	2	1	18	40	3	2
335	290	MAGNUSSON KLEMENCIC ASSOCIATES, Seattle, Wash.	E	47.7	6.5	85	0	0	0	0	0	14	0	0
336	346	SPEC SERVICES INC., Fountain Valley, Calif.	E	47.5	0.0	0	0	0	1	1	98	0	0	0
337	369	DAVIS PARTNERSHIP ARCHITECTS, Denver, Colo.	A	47.5	0.0	100	0	0	0	0	0	0	0	0
338	302	AI ENGINEERS INC., Middletown, Conn.	E	47.5	0.0	18	0	7	10	9	0	56	0	0
339	285	DE CORP., Houston, Texas	E	47.3	0.0	0	0	0	36	12	0	32	0	0
340	325	PROFESSIONAL ENGINEERING CONSULTANTS PA, Wichita, Kan.	E	47.3	0.0	38	8	8	10	5	6	25	0	0
341	345	WILEYIWILSON, Lynchburg, Va.	AE	47.1	0.0	74	0	9	4	5	5	2	0	1
342	301	THE THRASHER GROUP INC., Bridgeport, W.Va.	EA	46.5	0.0	24	2	4	15	22	18	13	0	0
343	343	MODJESKI AND MASTERS INC., Mechanicsburg, Pa.	E	46.3	0.0	0	0	0	0	0	0	100	0	0
344	387	BALA CONSULTING ENGINEERS, King of Prussia, Pa.	E	46.1	0.0	97	0	0	0	0	0	0	0	3
345	432	ATCS PLC, Herndon, Va.	E	46.1	0.0	4	0	0	0	3	0	79	0	0
346	375	HEAPY, Dayton, Ohio†	E	46.0	0.0	97	2	0	0	0	0	1	0	0
347	**	TAI ENGINEERING, Owings Mills, Md.	EC	46.0	0.0	11	83	2	0	0	4	0	0	0
348	329	LHB INC., Duluth, Minn.†	EA	46.0	0.0	48	0	0	0	0	28	20	0	0
349	381	JORDAN & SKALA ENGINEERS, Norcross, Ga.	E	46.0	0.0	100	0	0	0	0	0	0	0	0
350	331	ARM GROUP ENTERPRISES INC., Hershey, Pa.†	E	45.4	0.0	12	13	5	2	40	1	17	0	0

**CUSHING TERRELL** along with CO Architects will provide design services for five new Montana State University nursing education centers.

RANK 2022	RANK 2021	FIRM	FIRM TYPE	2021 REVENUE \$ MIL.		GENERAL BUILDING	MANUFACTURING	POWER	WATER SUPPLY	SEWER / WASTE	INDUS. / PETROLEUM	TRANSPORTATION	HAZARDOUS WASTE	TELECOM
				TOTAL	INT'L									
351	351	PBS ENGINEERING AND ENVIRONMENTAL INC., Portland, Ore.	E	45.4	0.0	33	4	2	3	8	1	22	24	0
352	326	I. C. THOMASSON ASSOCIATES INC., Nashville, Tenn. †	E	45.2	0.0	75	1	6	1	0	13	3	0	0
353	354	BSA LIFESTRUCTURES, Indianapolis, Ind.	AE	45.1	0.0	100	0	0	0	0	0	0	0	0
354	334	MCLAREN ENGINEERING GROUP, Woodcliff Lake, N.J.	E	44.8	0.0	40	0	5	0	0	0	55	0	0
355	350	SUNRISE ENGINEERING INC., Fillmore, Utah	E	44.8	0.0	23	0	1	22	8	20	14	0	0
356	357	KAPUR & ASSOCIATES INC., Milwaukee, Wis.	E	44.7	0.0	6	0	35	1	1	4	51	1	0
357	295	LMN ARCHITECTS, Seattle, Wash.	A	44.7	0.0	96	0	0	0	0	0	4	0	0
358	332	THE BECK GROUP, Dallas, Texas	A	44.5	1.7	98	0	0	0	0	0	2	0	0
359	408	NILES BOLTON ASSOCIATES, Atlanta, Ga.	A	44.2	0.0	100	0	0	0	0	0	0	0	0
360	360	HERBERT ROWLAND & GRUBIC INC., Harrisburg, Pa.	E	43.7	0.0	19	0	0	17	21	0	24	0	0
361	368	M&S ENGINEERING LLC, Spring Branch, Texas	E	43.5	0.0	5	0	85	5	0	0	5	0	0
362	362	BOHANNAN HUSTON INC., Albuquerque, N.M.	E	43.4	0.0	19	10	0	12	11	0	24	0	0
363	367	STEINBERG HART, Los Angeles, Calif.	A	43.3	0.0	100	0	0	0	0	0	0	0	0
364	239	EXYTE AMERICAS HOLDING INC., Plano, Texas †	EC	43.2	0.0	0	100	0	0	0	0	0	0	0
365	**	STELLAR, Jacksonville, Fla.	E	43.1	4.8	6	0	0	0	0	94	0	0	0
366	442	THE VERTEX COS. INC., Weymouth, Mass. †	E	42.8	0.0	41	5	5	0	0	10	30	10	0
367	359	HUBBELL ROTH & CLARK INC., Bloomfield Hills, Mich.	EA	42.8	0.0	4	0	1	14	26	6	46	0	0
368	340	FFKR ARCHITECTS, Salt Lake City, Utah	A	42.5	0.0	100	0	0	0	0	0	0	0	0
369	366	GRAEF, Milwaukee, Wis.	EA	42.2	0.0	40	12	1	6	8	5	28	0	0
370	263	V3 COS., Woodridge, Ill. †	E	42.2	2.7	42	0	17	5	0	0	33	0	0
371	344	LIONAKIS, Sacramento, Calif.	AE	41.9	0.0	100	0	0	0	0	0	0	0	0
372	393	BWBR, Saint Paul, Minn.	A	41.6	0.0	91	9	0	0	0	0	0	0	0
373	355	HOUSTON ENGINEERING INC., Fargo, N.D.	E	41.3	0.0	0	0	0	8	4	0	14	0	0
374	371	BOSWELL ENGINEERING INC., South Hackensack, N.J.	E	41.3	0.0	4	0	20	4	5	0	65	2	0
375	342	KIRKSEY ARCHITECTS INC., Houston, Texas	A	40.5	0.0	90	0	0	0	0	0	0	0	10
376	356	TAIT, Santa Ana, Calif.	EA	40.4	0.0	56	0	6	0	1	8	8	2	18
377	413	PRIMERA ENGINEERS LTD., Chicago, Ill.	EA	40.3	0.0	13	0	60	0	0	0	27	0	0
378	363	RDG PLANNING & DESIGN, Des Moines, Iowa	A	40.0	0.0	92	0	0	0	0	0	1	0	0
379	392	KRAZAN & ASSOCIATES, Clovis, Calif.	E	39.7	0.0	61	3	4	5	1	4	13	6	3
380	374	LANDRUM & BROWN INC., Cincinnati, Ohio †	O	39.7	14.3	2	0	0	0	0	0	98	0	0
381	**	SGA, Boston, Mass. †	A	39.6	0.0	100	0	0	0	0	0	0	0	0
382	390	THE LIRO GROUP, Syosset, N.Y. †	EA	39.5	0.0	50	0	0	0	0	0	19	13	17
383	463	MILHOUSE ENGINEERING & CONSTRUCTION INC., Chicago, Ill. †	EC	39.5	0.0	30	0	34	0	1	0	29	0	5
384	372	RRC POWER & ENERGY LLC, Round Rock, Texas	O	39.4	0.0	0	0	100	0	0	0	0	0	0
385	349	TPG ARCHITECTURE LLP, New York, N.Y.	A	39.0	3.5	100	0	0	0	0	0	0	0	0
386	410	LEIGHTON GROUP INC., Irvine, Calif. †	GE	39.0	0.0	62	0	0	8	0	3	23	3	3
387	427	MATRIX TECHNOLOGIES INC., Maumee, Ohio	EA	38.9	0.0	0	84	0	0	0	16	0	0	0
388	373	FENTRESS ARCHITECTS, Denver, Colo.	A	38.9	0.0	48	0	0	0	0	0	52	0	0
389	395	ZYSCOVICH ARCHITECTS, Miami, Fla.	A	38.8	0.0	94	0	0	0	0	0	6	0	0
390	**	GALLOWAY & CO. INC., Greenwood Village, Colo.	EA	38.8	0.0	100	0	0	0	0	0	0	0	0
391	379	MAZZETTI, San Francisco, Calif.	E	38.7	0.0	15	0	0	0	0	0	4	0	2
392	388	MACGREGOR ASSOCIATES ARCHITECTS INC., Atlanta, Ga.	A	38.6	0.0	100	0	0	0	0	0	0	0	0
393	**	WALLACE DESIGN COLLECTIVE, Tulsa, Okla.	E	38.6	0.0	91	0	0	0	3	6	0	0	0
394	430	SANBORN HEAD & ASSOCIATES INC., Concord, N.H.	E	38.5	6.2	34	0	9	0	22	0	0	36	0
395	439	SHEEHAN NAGLE HARTRAY ARCHITECTS LTD., Chicago, Ill. †	A	38.4	8.1	11	0	0	0	0	0	0	0	89
396	407	TREANORHL, Lawrence, Kan.	A	38.2	0.0	73	0	0	0	0	7	2	0	0
397	383	CTL ENGINEERING INC., Columbus, Ohio †	EA	37.9	0.0	40	5	4	6	3	3	38	0	1
398	396	WK DICKSON & CO. INC., Charlotte, N.C.	E	37.9	0.0	0	0	0	20	24	10	29	0	0
399	414	JLG ARCHITECTS, Minneapolis, Minn.	A	37.5	0.0	100	0	0	0	0	0	0	0	0
400	412	THE OSBORN ENGINEERING CO., Cleveland, Ohio †	EA	37.2	0.0	41	7	3	6	11	7	17	0	9

RANK 2022	2021	FIRM	FIRM TYPE	2021 REVENUE \$ MIL.		GENERAL BUILDING	MANUFACTURING	POWER	WATER SUPPLY	SEWER / WASTE	INDUS. / PETROLEUM	TRANSPORTATION	HAZARDOUS WASTE	TELECOM
				TOTAL	INT'L									
401	**	BRIDGEFARMER & ASSOCIATES INC., Dallas, Texas	E	37.0	0.0	0	0	0	0	0	0	100	0	0
402	428	JCJ ARCHITECTURE, Hartford, Conn.	A	36.6	0.0	100	0	0	0	0	0	0	0	0
403	394	NEWCOMB & BOYD, Atlanta, Ga.	E	36.6	0.0	85	1	0	0	0	0	6	0	7
404	397	GFF INC., Dallas, Texas	A	36.6	0.0	100	0	0	0	0	0	0	0	0
405	433	CRAFTON TULL, Rogers, Ark.	EA	36.5	0.0	39	2	1	1	5	11	23	0	0
406	448	VOCON, Cleveland, Ohio	A	36.3	0.0	100	0	0	0	0	0	0	0	0
407	320	LOCHMUELLER GROUP INC., Evansville, Ind. †	E	36.3	0.0	0	0	0	0	26	0	64	0	0
408	464	SEPI, Raleigh, N.C.	E	36.0	0.0	18	0	0	0	0	0	82	0	0
409	**	FSB ARCHITECTS + ENGINEERS, Oklahoma City, Okla.	AE	36.0	0.0	100	0	0	0	0	0	0	0	0
410	456	PLUMMER ASSOCIATES INC., Fort Worth, Texas	E	35.9	0.0	0	0	0	48	41	0	0	0	11
411	404	RJN GROUP INC., Wheaton, Ill.	E	35.9	0.0	0	0	0	4	96	0	0	0	0
412	361	CPH INC., Sanford, Fla.	EA	35.8	1.3	34	0	0	15	23	0	10	0	0
413	**	ROWE PROFESSIONAL SERVICES CO., Flint, Mich.	E	35.6	0.0	0	0	0	3	3	14	61	0	0
414	435	KENDALL/HEATON ASSOCIATES INC., Houston, Texas	A	35.5	0.0	100	0	0	0	0	0	0	0	0
415	424	MCCLURE ENGINEERING, Clive, Iowa	E	35.5	0.0	34	0	0	17	9	0	25	0	0
416	386	DEKKER/PERICH/SABATINI LTD., Albuquerque, N.M.	AE	35.5	0.0	100	0	0	0	0	0	0	0	0
417	421	CTLTHOMPSON INC., Centennial, Colo. †	E	35.4	0.0	25	3	0	1	0	0	4	0	0
418	402	KS ENGINEERS PC, Newark, N.J.	E	35.0	0.0	0	0	0	0	0	0	100	0	0
419	378	D&B ENGINEERS AND ARCHITECTS DPC, Woodbury, N.Y.	EA	34.9	0.0	0	0	0	33	44	0	9	14	0
420	365	BHDP ARCHITECTURE, Cincinnati, Ohio	A	34.8	0.0	81	19	0	0	0	0	0	0	0
421	451	HIGHLAND ASSOCIATES, New York, N.Y.	AE	34.6	0.0	30	3	0	0	0	9	0	0	47
422	465	MBH ARCHITECTS, Alameda, Calif.	A	33.9	4.6	100	0	0	0	0	0	0	0	0
423	453	JONES EDMUNDS & ASSOCIATES INC., Gainesville, Fla. †	E	33.7	0.0	5	0	0	23	44	0	22	0	0
424	420	WENDEL, Williamsville, N.Y. †	AE	33.5	0.0	39	1	0	3	6	0	10	0	0
425	418	REBEL DESIGN+GROUP, Marina Del Rey, Calif. †	A	33.2	16.5	100	0	0	0	0	0	0	0	0
426	459	MG ENGINEERING DPC, New York, N.Y.	E	33.1	0.0	100	0	0	0	0	0	0	0	0
427	445	DAHLIN GROUP ARCHITECTURE PLANNING, Pleasanton, Calif.	A	33.1	0.0	100	0	0	0	0	0	0	0	0
428	479	THERMALTECH ENGINEERING INC., Cincinnati, Ohio	E	33.0	0.0	6	63	0	0	0	31	0	0	0
429	398	WHITNEY BAILEY COX & MAGNANI LLC, Baltimore, Md.	EA	32.9	0.0	26	0	0	2	0	3	68	0	0
430	**	POWERS BROWN ARCHITECTURE, Houston, Texas	A	32.9	1.3	63	30	0	0	0	0	0	0	0
431	385	ERDMAN ANTHONY, Rochester, N.Y.	E	32.9	0.0	21	0	0	11	0	0	68	0	0
432	**	LJB INC., Miamisburg, Ohio	EA	32.8	0.0	30	3	0	5	0	9	23	0	0
433	409	GROUP 70 INTERNATIONAL INC. DBA G70, Honolulu, Hawaii	O	32.8	1.5	100	0	0	0	0	0	0	0	0
434	438	KAHLER SLATER, Milwaukee, Wis.	A	32.6	0.0	100	0	0	0	0	0	0	0	0
435	425	RRMM ARCHITECTS, Chesapeake, Va.	A	32.4	0.0	100	0	0	0	0	0	0	0	0
436	458	DONOHUE & ASSOCIATES INC., Sheboygan, Wis.	E	32.1	0.0	0	0	0	21	79	0	0	0	0
437	470	TOWERPINKSTER, Kalamazoo, Mich.	AE	32.1	0.0	97	2	0	0	0	2	0	0	0
438	**	THE GATEWAY ENGINEERS INC., Pittsburgh, Pa. †	E	32.0	0.0	35	0	0	6	19	26	3	0	0
439	450	TRAFFIC PLANNING AND DESIGN INC., Pottstown, Pa.	E	31.8	0.0	0	0	0	0	0	0	100	0	0
440	415	GBBN, Cincinnati, Ohio	A	31.8	3.7	100	0	0	0	0	0	0	0	0
441	454	MCMAHON ASSOCIATES INC., Neenah, Wis. †	AE	31.5	0.0	16	10	1	11	48	3	10	0	0
442	307	DAY & ZIMMERMANN, Philadelphia, Pa. †	AE	31.4	14.3	84	4	0	0	0	0	1	0	11
443	469	THE EADS GROUP INC., Altoona, Pa.	EA	31.4	0.0	5	0	0	12	22	22	25	0	0
444	461	DATTNER ARCHITECTS, New York, N.Y.	A	31.3	0.0	93	0	0	0	0	0	7	0	0
445	496	ARRAY ARCHITECTS, Conshohocken, Pa.	A	31.3	0.0	100	0	0	0	0	0	0	0	0
446	487	LORING CONSULTING ENGINEERS INC., New York, N.Y.	E	31.3	1.3	74	0	0	0	0	0	0	0	2
447	403	INTEGRUS ARCHITECTURE PS, Spokane, Wash.	AE	31.2	0.0	100	0	0	0	0	0	0	0	0
448	434	RDC-S111, Long Beach, Calif.	A	31.2	0.0	100	0	0	0	0	0	0	0	0
449	480	RTM ENGINEERING CONSULTANTS LLC, Schaumburg, Ill.	E	31.1	0.0	86	5	0	0	0	5	0	0	5
450	490	DUNHAM ASSOCIATES, Minneapolis, Minn.	E	31.1	0.0	100	0	0	0	0	0	0	0	0

#331

PS&S, celebrating its 60th anniversary, announced April 4th that it had acquired the assets of New York's B. Thayer Associates.

RANK 2022	RANK 2021	FIRM	FIRM TYPE	2021 REVENUE \$ MIL.		GENERAL BUILDING	MANUFACTURING	POWER	WATER SUPPLY	SEWER / WASTE	INDUS. / PETROLEUM	TRANSPORTATION	HAZARDOUS WASTE	TELECOM
				TOTAL	INT'L									
451	443	ALLIANCE, Minneapolis, Minn.	A	31.0	0.0	26	0	0	0	0	0	74	0	0
452	**	VEENSTRA & KIMM INC., West Des Moines, Iowa†	EA	30.9	0.0	0	0	0	14	42	0	39	0	0
453	449	STG DESIGN, Austin, Texas	A	30.8	0.0	100	0	0	0	0	0	0	0	0
454	452	FGM ARCHITECTS INC., Oak Brook, Ill.	A	30.5	0.0	100	0	0	0	0	0	0	0	0
455	382	WALLACE MONTGOMERY & ASSOCIATES LLP, Hunt Valley, Md.	E	30.4	0.0	0	0	0	15	2	0	83	0	0
456	440	E.L. ROBINSON ENGINEERING CO., Charleston, W.Va.†	E	30.4	0.0	0	0	0	12	12	5	69	0	0
457	447	STEWART, Raleigh, N.C.	E	30.1	0.0	80	0	0	0	10	0	10	0	0
458	**	PVE LLC, Sewickley, Pa.	EA	30.0	0.0	100	0	0	0	0	0	0	0	0
459	423	KSA ENGINEERS INC., Longview, Texas	EA	30.0	0.0	7	0	0	15	27	10	32	0	0
460	**	LAWRENCE GROUP, St. Louis, Mo.†	A	29.9	0.0	100	0	0	0	0	0	0	0	0
461	441	CDG INC., Andalusia, Ala.	E	29.7	0.0	9	0	2	6	10	59	12	0	0
462	467	GMB ARCHITECTURE + ENGINEERING, Holland, Mich.	AE	29.7	0.0	100	0	0	0	0	0	0	0	0
463	417	BETA GROUP INC., Lincoln, R.I.	E	29.6	0.0	0	0	0	6	24	0	55	0	0
464	460	FRENCH & PARRELO ASSOCIATES, Wall Township, N.J.	E	29.5	0.0	35	6	11	6	3	0	21	0	17
465	**	SCHMIDT ASSOCIATES, Indianapolis, Ind.	AE	29.2	0.0	100	0	0	0	0	0	0	0	0
466	468	BORTON-LAWSON, Wilkes-Barre, Pa.	AE	29.2	0.0	100	0	0	0	0	0	0	0	0
467	**	KZF DESIGN, Cincinnati, Ohio	AE	29.1	2.6	97	2	0	0	0	0	1	0	0
468	476	DOKKEN ENGINEERING, Folsom, Calif.	E	28.9	0.0	0	0	0	0	0	0	100	0	0
469	471	CSO, Indianapolis, Ind.	A	28.9	0.0	98	2	0	0	0	0	0	0	0
470	457	ESG ARCHITECTURE & DESIGN, Minneapolis, Minn.	A	28.7	0.0	100	0	0	0	0	0	0	0	0
471	478	RULE JOY TRAMMELL + RUBIO LLC, Atlanta, Ga.	A	28.6	0.0	100	0	0	0	0	0	0	0	0
472	429	LANIER & ASSOCIATES CONSULTING ENGINEERS INC., New Orleans, La.	E	28.4	0.0	0	0	0	0	0	0	100	0	0
473	475	LAMP RYNEARSON INC., Omaha, Neb.	E	28.4	0.0	0	0	1	4	10	3	3	0	0
474	**	BUILDING & EARTH SCIENCES INC., Birmingham, Ala.	GE	28.3	0.0	45	0	14	0	0	9	5	0	0
475	389	MUESER RUTLEDGE CONSULTING ENGINEERS PLLC, New York, N.Y.	E	28.3	0.0	27	12	14	12	13	12	9	0	0
476	485	LRK INC., Memphis, Tenn.	A	28.2	0.0	100	0	0	0	0	0	0	0	0
477	**	MASSA MULTIMEDIA ARCHITECTURE PC, Neptune, N.J.	A	28.1	0.0	100	0	0	0	0	0	0	0	0
478	**	ENVIRONMENTAL DESIGN AND RESEARCH (EDR), Syracuse, N.Y.†	E	27.9	0.0	0	0	75	5	20	0	0	0	0
479	444	SOUDER MILLER & ASSOCIATES, Albuquerque, N.M.†	EA	27.6	0.0	41	0	0	37	5	1	8	8	0
480	437	FXCOLLABORATIVE, Brooklyn, N.Y.	A	27.3	0.0	87	0	0	0	0	0	13	0	0
481	**	SB ARCHITECTS, San Francisco, Calif.†	A	26.8	5.2	0	0	0	0	0	0	0	0	0
482	**	CUBE 3, Lawrence, Mass.	A	26.8	0.0	100	0	0	0	0	0	0	0	0
483	**	FRANCIS CAUFFMAN ARCHITECTS, Philadelphia, Pa.	A	26.6	0.0	100	0	0	0	0	0	0	0	0
484	462	AHL, Honolulu, Hawaii	A	26.4	0.0	100	0	0	0	0	0	0	0	0
485	**	HASTINGS ARCHITECTURE LLC, Nashville, Tenn.	A	26.1	0.0	100	0	0	0	0	0	0	0	0
486	491	HUSSEY GAY BELL, Savannah, Ga.	EA	26.1	0.0	46	19	0	12	11	0	11	0	0
487	399	ARORA ENGINEERS INC., Chadds Ford, Pa.	E	26.0	0.0	4	0	0	0	0	0	96	0	0
488	**	TEECOM, Oakland, Calif.	E	25.9	1.4	45	6	0	0	0	2	1	0	44
489	482	R&M CONSULTANTS INC., Anchorage, Alaska	E	25.8	0.0	3	0	1	1	1	1	89	1	0
490	472	C&I ENGINEERING, Louisville, Ky.	E	25.6	0.0	0	15	1	0	0	84	0	0	0
491	486	QUATTROCCHI KWOK ARCHITECTS, Santa Rosa, Calif.	A	25.4	0.0	100	0	0	0	0	0	0	0	0
492	**	UNITED CONSULTING, Indianapolis, Ind.	E	25.3	0.0	0	0	0	4	10	0	85	0	0
493	436	VCBO ARCHITECTURE, Salt Lake City, Utah	A	25.2	0.0	100	0	0	0	0	0	0	0	0
494	**	FEHR GRAHAM - ENGINEERING & ENVIRONMENTAL, Rockford, Ill.	E	25.1	0.0	11	0	0	0	42	0	16	2	0
495	488	DEVCON CONSTRUCTION INC., Milpitas, Calif.	E	25.0	0.0	100	0	0	0	0	0	0	0	0
496	500	BSC GROUP, Boston, Mass.†	E	24.9	0.0	32	0	32	1	0	0	32	3	0
497	483	WDG ARCHITECTURE, Washington, D.C.†	A	24.7	0.0	100	0	0	0	0	0	0	0	0
498	**	SUPERIOR ENGINEERING LLC, Hammond, Ind.	E	24.7	0.0	3	0	4	0	0	93	0	0	0
499	**	PICKETT AND ASSOCIATES, INC., Tampa, Fla.	E	24.7	0.0	0	0	86	0	1	0	10	0	0
500	**	TAYLOR DESIGN, Irvine, Calif.	A	24.5	0.0	100	0	0	0	0	0	0	0	0







## 2022 Top 500 Design Firms – Subsidiaries by Rank

### Rank Company *Subsidiary*

**1 Jacobs**  
*All Jacobs subsidiaries related to Jacobs Engineering Group Inc.*

**3 Fluor**  
*Fluor Constructors International Inc.  
 Fluor Enterprises Inc.*

**5 HDR**  
*HDR Architects Associates, Inc.  
 HDR Architecture, Inc.  
 HDR China Co. Ltd.  
 HDR Construction Control Corp.  
 HDR Consulting Limited  
 HDR Corp.  
 HDR Corp. Pty. Ltd.  
 HDR Engineering, Inc.  
 HDR Environmental, Operations and Construction  
 HDR GmbH  
 HDR Middle East LLC  
 HDR Security Operations Inc.*

**8 Burns & McDonnell**  
*AZCO  
 Ref-Chem*

**9 Stantec Inc.**  
*Stantec Architecture Inc.  
 Stantec Consulting Michigan Inc.  
 Stantec Consulting Services Inc.  
 Stantec Energy and Resources Inc.  
 Stantec Planning and Landscape Architecture P.C.*

**12 Worley**  
*Advisian*

### Rank Company *Subsidiary*

*IntecSea  
 JESA  
 Worley Field Services  
 Worley International*

**15 Parsons Corp.**  
*Parsons Environment & Infrastructure  
 Parsons Government Services  
 Parsons Transportation*

**16 Black & Veatch**  
*Black & Veatch Construction, Inc.  
 Black & Veatch Corporation  
 Black & Veatch International  
 Black & Veatch LTD of Michigan  
 Black & Veatch Management Consulting, LLC  
 Black & Veatch New York LLP  
 Black & Veatch Special Projects Corp  
 Overland Contracting, Inc.*

**18 Kiewit Corp.**  
*Cherne Contracting Corporation  
 Construction Kiewit Cie  
 Ganotec Inc.  
 Kiewit Building Group Inc.  
 Kiewit Canada Group Inc  
 Kiewit Engineering Group Inc  
 Kiewit Foundations Co.  
 Kiewit Infrastructure Co.  
 Kiewit Infrastructure South Co.  
 Kiewit Infrastructure West Co.  
 Kiewit Offshore Services Ltd.  
 Kiewit Power Constructors Co.  
 Kiewit Water Facilities South Co.  
 Mass. Electric Construction Co.  
 Peter Kiewit Sons ULC  
 T.E. Ibberson Company  
 TIC - The Industrial Company*

## 2022 Top 500 Design Firms – Subsidiaries by Rank

**Rank Company Subsidiary**

**20 SNC-Lavalin Inc.**

*Atkins Energy Federal EPC, Inc.*  
*Atkins Energy Global Solutions LLC*  
*Atkins Nuclear Secured, LLC*  
*Data Transfer Solutions*  
*FAITHFUL + GOULD, LLC*  
*Isotek Systems, LLC*  
*SNC - LAVALIN ENGINEERS & CONSTRUCTORS INC. US*  
*SNC-LAVALIN CONSTRUCTORS INC.*  
*SNC-LAVALIN MAJOR PROJECTS (ONTARIO) INC.*  
*SNC-LAVALIN PROJECT SERVICES INC.*  
*The Atkins North America Holdings Corporation*  
*US Energy JVs*

**21 Terracon Consultants Inc.**

*Argus Pacific, Inc.*  
*Building Exterior Solutions, Inc.*  
*Burleson Consulting, Inc.*  
*CHJ Consultants, Inc.*  
*Dunkelberger Engineering and Testing, Inc.*  
*Earth Exploration, Inc.*  
*Environmental Planning Group, LLC*  
*Environmental Services, Inc.*  
*GET Solutions, Inc.*  
*GeoCapitol Engineering, LLC*  
*GeoConcepts Engineering, Inc.*  
*Geotechnical & Environmental Consultants, Inc.*  
*Mayes Testing Engineers, Inc.*  
*NORCAL Geophysical Consultants, Inc.*  
*Neil O. Anderson and Associates, Inc.*  
*Pivvot, Inc.*  
*RGA Environmental, Inc.*  
*Skelly and Loy, Inc.*  
*Sport Environmental Services, LLC*  
*St. John-Mittelhauser & Associates, Incorporated*  
*TAM Consultants, Inc.*  
*Terracon Consultants - MI, Inc.*

**Rank Company Subsidiary**

*Terracon Consultants – NY, Inc.*

**22 Intertek-PSI**

*Intertek*  
*Intertek-MT Group*  
*Intertek-PSI*

**23 CDM Smith**

*CDM Constructors Inc*  
*CDM Federal Programs*  
*The Louis Perry Group*

**24 NV5 Global Inc.**

*AT Advance Technologies Asia Pacific Pte. Ltd.*  
*Aero-Metric Holdings Corp*  
*Alta Environmental, LP*  
*Bock & Clark Corporation*  
*CHI Engineering Services Inc.*  
*CivilSource, Inc.*  
*Dade Moeller & Associates*  
*Energenz Consulting LLC*  
*Energenz Consulting LTD*  
*GeoDesign, Inc*  
*Geodynamics, LLC*  
*Geospatial Holdings, Inc.*  
*Hanna Engineering*  
*Holdrege & Kull Consulting Engineers & Geologists*  
*IDA Engineering Private Limited (India)*  
*Industrial Design Associates International (Hong Kong) Limited*  
*Industrial Design Associates International PTE LTD*  
*JBA Consulting Engineers*  
*JBA Consulting Engineers (Asia) Limited*  
*JBA Consulting Engineers (Asia) Limited Marron & Associates*  
*Mediatech FZ, LLC*  
*Optimal Energy, LLC*  
*PES Environmental*  
*Quantum Spatial Canada*



## 2022 Top 500 Design Firms – Subsidiaries by Rank

### Rank Company Subsidiary

*Quantum Spatial India Private Limited*  
*Quantum Spatial, Inc.*  
*Richard D. Kimball Company*  
*Sage Renewable Energy Consulting*  
*Sebesta, Inc.*  
*The Sextant Group, Inc.*  
*WHPacific, Inc.*

### 25 Bechtel

*BNT International Company*  
*Bechtel Construction Operation, Inc.*  
*Bechtel Corporation*  
*Bechtel Global Energy Inc.*  
*Bechtel Global Infrastructure & Minerals Inc.*  
*Bechtel India Private Ltd.*  
*Bechtel Nuclear, Security & Environmental, Inc.*

### 27 GHD Inc.

*GHD Consultants Ltée*  
*GHD Consulting Services Inc.*  
*GHD Engineering Group Inc.*  
*GHD Limited*  
*GHD S.A*  
*GHD Services Inc.*

### 28 Michael Baker International

*Baker LPA Architects, PC*  
*JMA Architects, LLC*  
*JMA Nevada Architects, PC*  
*Michael Baker Engineering, Inc*  
*Michael Baker International Architects, PC*  
*Michael Baker International Holdco Corporation*  
*Michael Baker International, Inc*

### 30 Mott MacDonald

*Mott MacDonald Alabama, LLC*  
*Mott MacDonald Florida, LLC*  
*Mott MacDonald Group, Inc.*  
*Mott MacDonald I&E, LLC*

### Rank Company Subsidiary

*Mott MacDonald Ltd.*  
*Mott MacDonald NY Inc.*  
*Mott MacDonald Operating Services LLC*  
*Mott MacDonald, LLC*

### 31 T.Y. Lin International

*Bon Vietnam Joint Venture Company Limited*  
*C.Y.L Engineering Consulting Inc.*  
*GPO Group, S.A.*  
*IDEAM, S.A.*  
*P.T. Konsultant T.Y. Lin International*  
*Robert Silman Associates PLLC*  
*Robert Silman Associates Structural Engineers, D.P.C.*  
*SMA Bersekutu Sdn. Bhd.*  
*Sam Schwartz Consulting, LLC*  
*T.Y. Lin International*  
*T.Y. Lin International Canada, Inc.*  
*T.Y. Lin International Engineering & Architecture, P.C.*  
*T.Y. Lin International Engineering Consulting (China) Co., Ltd.*  
*T.Y. Lin International Pte. Ltd.*  
*T.Y. Lin International Sdn. Bhd.*  
*T.Y. Lin International Taiwan Consulting Engineers, Inc.*  
*T.Y. Lin International Vietnam Co., Ltd.*  
*T.Y. Lin Panama, S.A.*  
*The Municipal Infrastructure Group Ltd. (TMIG)*

### 33 Perkins&Will

*Nelson\Nygaard Consulting*  
*Pierre-Yves Rochon*  
*Pierre-Yves Rochon*  
*Portland*  
*Schmidt Hammer Lassen*

### 34 Sargent & Lundy

*Sargent & Lundy Engineering Services, Inc.*  
*Sargent & Lundy Engineers, Ltd.*

## 2022 Top 500 Design Firms – Subsidiaries by Rank

**Rank Company Subsidiary**  
*Sargent & Lundy, L.L.C.*

**35 STV Group Inc.**

*CP&Y*  
*STV Architects*  
*STV Construction Inc.*  
*STV Energy Services, Inc.*  
*STV Incorporated*

**36 Dewberry**

*Dewberry Architects Inc.*  
*Dewberry Design-Builders Inc.*  
*Dewberry Engineers Inc.*

**37 Brown and Caldwell**

*Brown and Caldwell Constructors*  
*Brown and Caldwell Consultants Canada*

**38 Arup**

*Arup Canada Inc*  
*Arup Texas Inc*  
*Arup US, Inc*

**40 Geosyntec Consultants**

*Enviro Group Limited, Inc.*  
*Geosyntec Consultants International, Inc.*  
*Geosyntec Consultants Pty. Ltd.*  
*Geosyntec Consultants, Ltd.*  
*MEC Water Resources, Inc.*

**42 Universal Engineering Sciences**

*Alpha Testing, Inc.*  
*Construction Testing & Engineering, Inc.*  
*Contour Engineering*  
*GEOservices, LLC*  
*GFA International*  
*GSI Engineering*  
*Geotechnology Inc.*

**Rank Company Subsidiary**

*McGinley & Associates*  
*NOVA Geotechnical & Inspection Services*  
*SUMMIT Engineering, Laboratory & Testing,*  
*P.C.*  
*Universal Engineering Sciences*  
*Wallace-Kuhl & Associates*

**44 S&B Engineers and Constructors Ltd.**

*Bibb Engineers, Architects, & Constructors LLC*  
*Ford, Bacon & Davis, LLC*  
*S&B Engineers and Constructors, Ltd.*  
*S&B Fabrication Services, Ltd*  
*S&B Group International, Ltd.*  
*S&B Infrastructure Construction, Ltd.*  
*S&B Infrastructure Engineering, Ltd.*  
*S&B Infrastructure Private, Ltd.*  
*S&B Infrastructure Private, Ltd.*  
*S&B Northeast Operations, Ltd.*  
*S&B Pipeline Division, Ltd.*  
*S&B Plant Services, Ltd.*  
*TAI Engineers LLC*

**45 Kleinfelder**

*CMWorks, Inc.*  
*Century Engineers, LLC*  
*Design Engineers, Inc.*  
*Gas Transmission Systems, Inc.*  
*Industrial Fluid Management, Inc.*  
*Kleinfelder Australia Pty*  
*Kleinfelder Canada, Inc.*  
*Kleinfelder Construction Services*  
*Kleinfelder Northeast, Inc.*  
*Kleinfelder Southeast, Inc.*  
*Kleinfelder, Inc.*  
*Poggemeyer Design Group, Inc.*  
*The Kleinfelder Group, Inc.*

**47 LANGAN**

*Langan CT, Inc*  
*Langan Engineering and Environmental*  
*Services, INC*

## 2022 Top 500 Design Firms – Subsidiaries by Rank

**Rank Company Subsidiary**

*Langan Engineering, Environmental,  
Surveying and Landscape Architecture, DPC SA  
Langan International UK, LTD  
Langan International, LLC  
Langan MI, Inc.*

**48 KCI Technologies Inc.**

*KCI Communications Infrastructure  
KCI Environmental Technologies and  
Construction*

**49 RS&H Inc.**

*RS&H Architects-Engineers-Planners, Inc.  
RS&H Commercial Realty, Inc.  
RS&H Michigan, Inc.*

**51 Woolpert Inc.**

*AAM  
CivilTech Engineering  
Data Cloud Solutions  
Jviation  
Optimal Geo  
Southern Mapping Company  
Woolpert Canada  
eTrac*

**52 Skidmore Owings & Merrill**

*SOM (Europe) LLP  
SOM Architectural Consulting (Shanghai) Co.  
Ltd.  
SOM LLP*

**55 LJA Engineering**

*Berg Oliver  
Horizon Environmental  
LJA Rail  
LJA Surveying*

**Rank Company Subsidiary**

**57 Hargrove Engineers + Constructors**

*Hargrove Controls + Automation  
Hargrove Life Sciences  
Tormod*

**58 EN Engineering LLC**

*CNA LLC  
ESC Engineering  
Energy Initiatives Group LLC  
G2 Integrated Solutions LLC  
Kestrel Power Engineering LLC  
Kestrel Power Engineering Ltd  
QC Data LLC  
Spectrum Engineering LLC  
Texas Utility Engineering LLC*

**59 SCS Engineers**

*SCS Energy  
SCS Engineers  
SCS Field Services*

**60 Johnson Mirmiran & Thompson Inc.**

*JMT of New York, Inc  
Vaughn & Melton*

**61 CHA Consulting Inc. (CHA)**

*A&P Engineers (acquired in February 2022)  
American Fire  
CHA Integrated Solutions*

**64 Engineering Consulting Services (ECS)**

*ECS Capitol Services, PLLC  
ECS Corporate Services  
ECS Florida, LLC  
ECS Mid-Atlantic, LLC  
ECS Midwest, LLC  
ECS Southeast, LLP*

## 2022 Top 500 Design Firms – Subsidiaries by Rank

**Rank Company Subsidiary**  
ECS Southwest, LLP

**66 Fugro USA**

*Fugro USA Land, Inc.*  
*Fugro USA Marine, Inc.*

**68 Foth**

*Foth Infrastructure & Environment, LLC*  
*Foth Production Solutions*

**69 Perkins Eastman**

*BFJ Planning*  
*RGR Landscape*  
*Urbanomics*

**70 Greenman-Pedersen Inc. (GPI)**

*UESI*

**76 CONSOR Engineers**

*Civic Engineering & Information Technology, LLC*  
*Conсор Engineering & Land Surveying - NY, PC*  
*Murraysmith, Inc*

**77 TranSystems**

*L.R. Kimball*  
*OMEGA & Associates*

**78 Salas O'Brien**

*BVH Integrated Services*  
*PCI*  
*SIA Solutions*  
*Stephenson Engineering*

**81 Atwell LLC**

*RVi Planning and Landscape Architecture*

**Rank Company Subsidiary**

*Strategic Construction Solutions, Inc.*

**82 Moffatt & Nichol**

*Moffatt & Nichol Information Systems*  
*Moffatt & Nichol, Baltics*  
*Moffatt & Nichol, Brazil*  
*Moffatt & Nichol, Chile*  
*Moffatt & Nichol, Columbia*  
*Moffatt & Nichol, London*  
*Moffatt & Nichol, Panama*

**87 Page**

*Page Southerland Page, International, LLC*  
*age Southerland Page, International, Inc.*  
*age Southerland Page, Mexico*

**89 IPS-Integrated Project Services LLC**

*IPS BioEngineering Technology (Shanghai) Co., Ltd*  
*IPS BioPharmaceutical Technology Consulting (Tianjin) LLC*  
*IPS International Private Ltd.*  
*IPS-Integrated Project Services (Germany) GmbH*  
*IPS-Integrated Project Services (Ireland) Limited*  
*IPS-Integrated Project Services GmbH*  
*IPS-Integrated Project Services Limited*  
*IPS-Integrated Project Services Pte. Ltd.*  
*IPS-Integrated Project Services, ULC*  
*IPS-Mehtalia Pvt. Ltd.*  
*IPS-Serviços de Projetos Integrados Ltda.*  
*Linesight*  
*The Cardinal Group USA, LLC*

**92 ENERCON**

*Enercon Federal Services*



## 2022 Top 500 Design Firms – Subsidiaries by Rank

**Rank Company** *Subsidiary*

**98 Stanley Consultants**

*SCEPSC  
SCIPL*

**99 David Evans Enterprises Inc.**

*Disaster and Emergency Management Services  
International, LLC  
Flux Resources, LLC  
Motus Collaborative, LLC*

**103 SAM LLC**

*SAM - Construction Services, LLC*

**108 Braun Intertec Corp.**

*Braun Intertec  
Edwards-Pitman Environmental, Inc.  
GME Consulting Services, Inc*

**110 Haley & Aldrich Inc.**

*H&A OF NEW YORK LLP  
HALEY & ALDRICH CONSTRUCTION SERVICES  
HALEY & ALDRICH OF MICHIGAN, INC  
HART CROWSER, A DIVISION OF HALEY &  
ALDRICH*

**113 Merrick & Co.**

*Merrick & Company UK, Ltd.  
Merrick Canada, ULC  
Merrick Mexico*

**114 Ardurra Group Inc.**

*Ardurra Group New York  
Ardurra Group North Carolina  
PCA Australia*

**Rank Company** *Subsidiary*

**124 Ulteig Engineers Inc.**

*Next Level SCADA*

**128 Morrison Hershfield**

*Morrison Hershfield Corporation  
Morrison Hershfield Geomatics  
Morrison Hershfield International Inc.  
Morrison Hershfield Limited  
Morrison Hershfield Managers Inc.*

**129 Henderson Engineers Inc.**

*HNY Consulting Engineers  
Henderson Building Solutions  
Henderson Engineers*

**130 GZA**

*AirLogics, LLC  
GZA GeoEnvironmental, Inc.  
Goldberg-Zoino Associates of New York, P.C.  
d/b/a GZA GeoEnvironmental of New York*

**131 Weston & Sampson**

*SB Church, Inc.  
W&S of North Carolina, Inc.  
Weston & Sampson Architects, Inc.  
Weston & Sampson CMR, Inc.  
Weston & Sampson Engineers, Inc.  
Weston & Sampson Engineers, PC  
Weston & Sampson Land Surveyors, Inc.  
Weston & Sampson PE, LS, LA, PC  
Weston & Sampson Services, Inc.*

**132 Bolton & Menk Inc.**

*DBA ColeJenest & Stone  
DBA DDC Engineers*

## 2022 Top 500 Design Firms – Subsidiaries by Rank

**Rank Company Subsidiary**

**135 LaBella Associates D.P.C.**

*Aztech Environmental Technologies  
LaBella Engineering, SLU  
LaBella Environmental LLC  
The Chazen Companies*

**136 NORR**

*CION COULTER Corporation  
NORR Architects & Engineers Ltd.  
NORR Architects, Engineers, Planners  
NORR Associates Inc.  
NORR Consultants Limited  
NORR Design Inc.  
NORR Inc.  
NORR LLC  
NORR Limited*

**141 DLZ Corp.**

*DLZ American Drilling, Inc.  
DLZ Carbon, Inc.  
DLZ Illinois, Inc.  
DLZ Indiana, LLC  
DLZ Industrial Surveying, Inc.  
DLZ Industrial, LLC  
DLZ Kentucky, Inc.  
DLZ Michigan, Inc.  
DLZ National, Inc.  
DLZ Ohio, Inc.  
DLZ Pennsylvania, LLC  
DLZ Wisconsin, LLC*

**142 Flad Architects**

*Flad Architects  
Flad Architects  
Flad Architects  
Flad Architects  
Flad Architects  
Flad Architects  
Flad Architects  
Flad Architects  
Flad Architects*

**Rank Company Subsidiary**

**145 GAI Consultants Inc.**

*GAI Consultants - NC, Inc.  
GAI Consultants of Michigan, PLC  
GAI Engineering & Surveying Consultants of  
New York, PC  
Lotspeich | Associates, Inc.  
Real Estate Research Consultants, Inc  
Systems Planning Corporation*

**146 Congruex**

*A&M Communications Company LLC  
CHC Consulting LLC  
Congruex SpliceCo LLC  
Gudenkauf LLC  
HHS Construction, LLC  
Matrix Engineering LLC  
Ohio Valley Excavating LLC  
Southeast Utilities of Georgia LLC  
Terra Technologies LLC  
True North Management Services LLC  
WhiteCo LLC*

**149 Electrical Consultants Inc.**

*EPC Services Company*

**154 Beam Longest & Neff**

*Beam, Longest & Neff, LLC  
McIntosh Perry*

**157 Coffman Engineers Inc.**

*Coffman Engineers, Inc  
Coffman Engineers, Inc  
Coffman Engineers, Inc  
Coffman Engineers, Inc  
Coffman Engineers, Inc  
Coffman Engineers, Inc  
Coffman Engineers, Inc  
Coffman Engineers, Inc  
Coffman Engineers, Inc*

## 2022 Top 500 Design Firms – Subsidiaries by Rank

**Rank Company Subsidiary**

*Coffman Engineers, Inc*  
*Coffman Engineers, Inc*  
*Coffman Engineers, Inc*

**161 Syska Hennessy Group**

*Syska Hennessy Group China Inc.*  
*Syska Hennessy Group Inc.*  
*Syska Hennessy Group Middle East LLC*

**163 The Burke Group Ltd.**

*Burke LLC*  
*Christopher B Burke Engineering, Ltd.*  
*Christopher B. Burke Engineering LLC*  
*Emerald Site Services*  
*KLOA*  
*LAWR*  
*Mackie Consultanats, LLC*  
*SPACECO, Inc.*  
*Thomson Surveying, Ltd.*

**165 Raba Kistner Inc.**

*Drake Environmental LLC*  
*Project Control of Texas, Inc.*  
*Raba Ingenieros*  
*Raba Kistner, Inc.*  
*Rice and Gardner, Inc.*

**171 Barge Design Solutions**

*Gould Turner Group*  
*ResourceTek*

**174 DCCM**

*Binkley & Barfield*  
*Coastland Civil Engineers*  
*R. G. Miller*  
*Rochester & Associates*

**Rank Company Subsidiary**

**175 Haskell**

*Benham*  
*Dysruptek*  
*Seiberling*

**179 Wade Trim**

*Wade Trim Associates, Inc.*  
*Wade Trim NY, PC*  
*Wade Trim, Inc. (Florida)*  
*Wade Trim, Inc. (Michigan)*  
*Wade Trim, Inc. (Ohio)*

**180 Dennis Group**

*Dennis Brasil Engenharia Ltda*  
*Dennis Group Canada Inc.*  
*Dennis Group International, Unipessoal Lda*  
*IFAB Engineering Partners Ltd*  
*Tech4Food Engineering & Innovation Lda*  
*The Dennis Engineering Group, LLC*  
*The Dennis Group, Inc.*

**182 RMA Group**

*Coating Specialists (CSI)*  
*Enviro Drill*  
*RMA GeoScience*  
*RMA Group, Inc*  
*SiteScan Subsurface Imaging*  
*Western Technologies*

**188 Zachry Group**

*JV Industrial*  
*Zachry Engineering Corporation*  
*Zachry Nuclear Engineering*

**189 Schnabel Engineering**

*Schnabel Engineering West, Inc.*  
*Schnabel Engineering, LLC*

## 2022 Top 500 Design Firms – Subsidiaries by Rank

**Rank Company Subsidiary**

**191 United Engineers & Constructors Inc.**

*Imperia Engineering Partners LLC*

**195 Verdantas**

*Alden Labs  
Duffield Associates  
GeoInsight  
HSW  
Hull & Associates*

**197 Neel-Schaffer Inc.**

*Maptech, Inc.  
True North Emergency Management*

**201 Greeley and Hansen**

*Greeley and Hansen Architects LLC  
Greeley and Hansen Colombia S.A.S  
Greeley and Hansen Ecuador CIA LTDA  
Greeley and Hansen Michigan LLC*

**202 Clark Nexsen**

*Clark Nexsen Construction Services*

**209 H2M architects + engineers**

*H2M Architects & Engineers  
H2M Associates  
H2M architects + engineers*

**215 BCC Engineering Inc.**

*Heath and Lineback Engineers, Inc.  
O&M Consulting, Inc.*

**221 The Yates Cos. Inc.**

*American Industrial Construction LLC  
Blaine Construction Corporation  
Edwards Electric Service LLC*

**Rank Company Subsidiary**

*JESCO, Inc.*

*Merit Electrical Inc.*

*Superior Asphalt Inc*

*W.G. Yates & Sons Construction Company*

*Yates Constructors LLC*

*Yates Engineers LLC*

*Yates Services LLC*

**226 McCormick Taylor Inc.**

*McCormick Taylor, Inc.*

**230 Core States Group**

*Bernardon LLC  
CoreStates Construction Services, Inc.  
CoreStates, Inc.  
Integrated Image, Inc.*

**231 Network Connex**

*Advantage Engineers LLC  
CCSI Networks LLC  
Fairhaven LLC  
Nat Tech LLC  
Vertical Communications LLC*

**232 Shive-Hattery**

*Epoch  
Studio951*

**240 J-U-B ENGINEERS Inc.**

*Gateway Mapping, Inc.  
The Langdon Group*

**246 Otak Inc.**

*K2 Consultancy Group*

**250 ISG**

*ISG Delivers, LLC*

## 2022 Top 500 Design Firms – Subsidiaries by Rank

**Rank Company Subsidiary**  
*ISG Field Services, LLC*

**251 The S/L/A/M Collaborative**  
*Construction Services of Somerset, Inc.*  
*S/L/A/M Architects, Landscape Architects & Engineers, P.C.*

**253 Geo-Logic Associates Inc.**  
*Clear Creek Associates, LLC*  
*Daniel B. Stephens & Associates, Inc.*  
*Geo-Logic Associates, Inc.*  
*Geo-Logic Peru, SRL*  
*Kunkel Engineering Group*  
*RMC*  
*The MINES Group*

**254 Anvil Corp.**  
*Doyon Anvil*  
*Redi Anvil*

**257 BRPH Cos. Inc.**  
*BRPH Architects Engineers, Inc.*  
*BRPH Construction Services, Inc.*  
*BRPH Mission Solutions, Inc.*

**258 ESP Associates Inc.**  
*Vickrey & Associates, LLC*

**261 PRIME AE Group Inc.**  
*Braun & Steidl Architects, Inc.*  
*Gulf Coast Architectural Group, Inc.*  
*Integrated Engineering, LLC*  
*KB Engineering, PC*  
*KB Group of New York, Inc.*  
*PRIME AE Group, Inc.*  
*PRIME Construction Management & Survey, Inc.*  
*PRIME Corporate Services, Inc.*

**Rank Company Subsidiary**  
*Penza Bailey Architects, Inc.*

**267 Baxter & Woodman Inc.**  
*B&W Natural Resources, LLC*  
*Baxter & Woodman Costa Rica, LLC*  
*Baxter Boller Design Build, LLC*  
*Concentric Integration LLC*

**269 T&M Associates**  
*East Coast Drilling, Inc.*

**273 Hart Howerton**  
*Hart Howerton Ltd*  
*Hart Howerton Partners*  
*Telegraph Hill Acquisition*

**279 TKDA**  
*Cedar Street Architecture*

**280 Wold Architects and Engineers**  
*Wold Architects and Engineers*

**285 Barton & Loguidice D.P.C.**  
*Barton & Loguidice Engineers, PLLC*  
*Barton & Loguidice Environmental Engineering & Geology, PLLC*  
*Barton & Loguidice, Inc.*  
*Barton & Loguidice, LLC*

**287 SYSTRA USA**  
*SYSTRA IBT*

**293 GBA (George Butler Associates)**  
*GBA*  
*GBA Builders*



## 2022 Top 500 Design Firms – Subsidiaries by Rank

**Rank Company Subsidiary**

- 295 Bartlett & West Inc.**  
*BW Construction, LLC*  
*BW Operations, LLC*  
*BW/Corman Technology, LLC - 50%*  
*Civil Associates, Inc*  
*West Dakota Water, LLC - 12%*
- 298 Burrow Global LLC**  
*Burrow Global Construction, LLC*  
*Burrow Global Services, LLC*
- 300 RCM Technologies Inc.**  
*PSR Engineering Solutions d.o.o. Beograd*  
*RCM Technologies (USA), Inc.*  
*RCM Technologies Canada Corp.*
- 301 ME Engineers**  
*M-E Engineers Limited*  
*ME/Vogle Taylor Engineers*
- 305 Humphreys & Partners Architects**  
*Atticus Real Estate*  
*Figoten, S.A.*  
*HP Civil Engineering*  
*HPA Design Group*  
*HPLA Studio*
- 310 Martin/Martin Inc.**  
*Martin/Martin Inc Wyoming*
- 315 Draper Aden Associates Inc.**  
*DAA*
- 322 England-Thims & Miller Inc.**  
*ETM Surveying & Mapping, Inc.*

**Rank Company Subsidiary**

- 325 Manhard Consulting Ltd**  
*Manhard Dallas, LLC*  
*Manhard.Tx LLC*
- 330 RETTEW Associates Inc.**  
*RETTEW Engineering & Surveying, P.C.*
- 346 HEAPY**  
*HEAPY Solutions*  
*Heapy Engineering Indiana LLC*
- 348 LHB Inc.**  
*LHB, LLC*
- 350 ARM Group Enterprises Inc.**  
*ARM EnerTech*  
*CAMCO*
- 352 I. C. Thomasson Associates Inc.**  
*I. C. Thomasson Associates, Inc.*
- 364 Exyte Americas Holding Inc.**  
*Exyte U.S., Inc.*  
*Total Facility Solutions, Inc.*
- 366 The Vertex Cos. Inc.**  
*Compass Project Management, Inc.*  
*Lockwood, Kessler & Bartlett*  
*Optistar Technology Consultants*  
*VTX Consulting Services Inc.*  
*Vertex Ingenieros Consultores*
- 370 V3 Cos.**  
*V3 Companies of Canada, Ltd.*  
*V3 Companies, Ltd.*

## 2022 Top 500 Design Firms – Subsidiaries by Rank

### Rank Company Subsidiary

#### 380 Landrum & Brown Inc.

*KBJ Architects, LLC*  
*KBJ-L&B Architects, LLC*  
*L&B Architecture, LLC*  
*L&B China, LLC*  
*L&B Transportation Technology Consultancy (Shanghai) Co., Ltd.*  
*L&B Worldwide Australia PTY LTD*  
*Landrum & Brown UK Limited*  
*Landrum & Brown Worldwide Services, LLC*  
*Trillion Av, LLC*

#### 381 SGA

*SGA*

#### 382 The LiRo Group

*DiGiorgio Associates, Inc*  
*James LaSala & Associates, LLP*  
*LiRo Architects + Planners, PC*  
*LiRo Engineers, Inc*  
*LiRo GIS, Inc*  
*LiRo Program and Construction Management PE, PC*

#### 383 Milhouse Engineering & Construction Inc.

*Milhouse Construction*  
*Milhouse Snow*

#### 386 Leighton Group Inc.

*Leighton Consulting, Inc.*  
*Leighton and Associates, Inc.*

#### 395 Sheehan Nagle Hartray Architects

*Sheehan Nagle Hartray Associates, Limited*

### Rank Company Subsidiary

#### 397 CTL Engineering Inc.

*Industrial Communication and Sound Vector Engineers*

#### 400 The Osborn Engineering Co.

*OSPORTS*

#### 407 Lochmueller Group Inc.

*Velis, Inc.*

#### 417 CTL|Thompson Inc.

*CTL|Thompson Materials Engineers, Inc.*

#### 423 Jones Edmunds & Associates Inc.

*JEACES*

#### 424 Wendel

*Wendel Architectural Resources, Inc.*  
*Wendel Construction, Inc.*  
*Wendel Consulting Services, LLC*  
*Wendel Energy Services, LLC*  
*Wendel Engineering Resources, Inc.*  
*Wendel Engineering, PC*  
*Wendel WD Architecture, Engineering, Surveying & Landscape Architecture, PC*

#### 425 Rebel Design+Group

*REBEL BRANDING*  
*REBEL MEDIA*  
*REBEL PROCUR*

#### 438 The Gateway Engineers Inc.

*Gateway Engineers*

## 2022 Top 500 Design Firms – Subsidiaries by Rank

### Rank Company Subsidiary

#### 441 **McMahon Associates Inc.**

*Integrated Public Resources  
McMahon, Inc.*

#### 442 **Day & Zimmermann**

*D&Z of Canada Corporation  
Day & Zimmermann International, Inc  
Day & Zimmermann Management Services, Inc.  
Day & Zimmermann NPS, Inc.  
The Atlantic Group, Inc. - dba DZ Atlantic*

#### 452 **Veenstra & Kimm Inc.**

*Calhoun-Burns & Associates, Inc.*

#### 456 **E.L. Robinson Engineering Co.**

*EL ROBINSON ENGINEERING OF OHIO CO*

#### 460 **Lawrence Group**

*Integrate Construction Partners  
Lawrence Group  
Niche Home Furnishings*

#### 478 **Environmental Design and Research (EDR)**

*EDR*

#### 479 **Souder Miller & Associates**

*SMA Operations, LLC  
Vigil Enterprises, Inc.*

#### 481 **SB Architects**

*SB Architects*

#### 496 **BSC Group**

*BSC Group, Inc.*

### Rank Company Subsidiary

#### 497 **WDG Architecture**

*WDG Architecture Dallas, PLLC  
WDG Interior Architecture, PLLC*

# Where the 2022 Top 500 Design Firms Worked

## Region Country Company

### A. NORTH AMERICA

#### Canada

*AKF Group*  
*AO Architects*  
*Affiliated Engineers Inc.*  
*Anvil Corp.*  
*Arcadis North America/Callison RTKL*  
*Arup*  
*BHDP Architecture*  
*BL Cos. Inc.*  
*Barge Design Solutions*  
*Barr Engineering Co.*  
*Beam Longest & Neff*  
*Bechtel*  
*Black & Veatch*  
*Burns & McDonnell*  
*CDM Smith*  
*CHA Consulting Inc. (CHA)*  
*CONSOR Engineers*  
*COWI North America*  
*CRB*  
*CTL/Thompson Inc.*  
*CannonDesign*  
*Cardno Inc.*  
*Coffman Engineers Inc.*  
*Collins Engineers Inc.*  
*Core States Group*  
*Corgan*  
*Cushing Terrell*  
*D'Amato Conversano Inc. dba DCI*  
*Engineers*  
*DLR Group*  
*Dennis Group*  
*Dunham Associates*  
*EN Engineering LLC*  
*ESP Associates Inc.*  
*EXP*  
*Elkus Manfredi Architects*  
*EnSafe Inc.*  
*Fishbeck*

## Region Country Company

*Flad Architects*  
*Fluor*  
*Foth*  
*Fugro USA*  
*GEI Consultants Inc.*  
*GHD Inc.*  
*GZA*  
*Gannett Fleming*  
*Genesis AEC*  
*Gensler*  
*Geo-Logic Associates Inc.*  
*GeoEngineers Inc.*  
*Geosyntec Consultants*  
*Ghafari Associates LLC*  
*HDR*  
*HEAPY*  
*HKS*  
*HNTB Cos.*  
*HOK*  
*Hanson Professional Services Inc.*  
*Hardesty & Hanover LLC*  
*Hargrove Engineers + Constructors*  
*Hart Howerton*  
*Haskell*  
*Hazen and Sawyer*  
*Henderson Engineers Inc.*  
*Highland Associates*  
*IBI Group Inc.*  
*IMEG Corp.*  
*IPS-Integrated Project Services LLC*  
*Integral Group*  
*Jacobs*  
*Jensen Hughes*  
*KPF Consulting Engineers*  
*Kahler Slater*  
*Kiewit Corp.*  
*Kimley-Horn*  
*Kleinfelder*  
*LANGAN*  
*LEO A DALY*  
*LJB Inc.*  
*LRK Inc.*

# Where the 2022 Top 500 Design Firms Worked

## Region Country Company

*Leidos*  
*Little Diversified Architectural Consulting Inc.*  
*Loring Consulting Engineers Inc.*  
*MBH Architects*  
*ME Engineers*  
*Magnusson Klemencic Associates*  
*Martin/Martin Inc.*  
*Matrix Technologies Inc.*  
*Merrick & Co.*  
*Michael Baker International*  
*Modjeski and Masters Inc.*  
*Moffatt & Nichol*  
*Morrison Hershfield*  
*Mott MacDonald*  
*Mueser Rutledge Consulting Engineers PLLC*  
*NORR*  
*Northeast-Western Energy Systems*  
*Otak Inc.*  
*Page*  
*Parsons Corp.*  
*Patrick Engineering Inc.*  
*Perkins Eastman*  
*Perkins&Will*  
*Pond*  
*Populous*  
*Powers Brown Architecture*  
*Primoris*  
*RCM Technologies Inc.*  
*RSP*  
*Raba Kistner Inc.*  
*Rebel Design+Group*  
*Robert A.M. Stern Architects*  
*Ross & Baruzzini Inc.*  
*SCS Engineers*  
*STUDIOS architecture*  
*STV Group Inc.*  
*SYSTRA USA*  
*Salas O'Brien*  
*Sanborn Head & Associates Inc.*  
*Sargent & Lundy*

## Region Country Company

*Sasaki*  
*Shannon & Wilson Inc.*  
*Shepley Bulfinch*  
*Simpson Gumpertz & Heger*  
*Skidmore Owings & Merrill*  
*Smith Seckman Reid Inc.*  
*SmithGroup*  
*Superior Engineering LLC*  
*Syska Hennessy Group*  
*T.Y. Lin International*  
*TEECOM*  
*Terracon Consultants Inc.*  
*Tetra Tech Inc.*  
*The Vertex Cos. Inc.*  
*Thornton Tomasetti*  
*Tower Engineering Professionals*  
*Ulteig Engineers Inc.*  
*United Engineers & Constructors Inc.*  
*V3 Cos.*  
*Vanderweil Engineers*  
*WSP USA*  
*Waldemar S. Nelson and Co. Inc.*  
*Walker Consultants*  
*Walter P Moore*  
*Ware Malcomb*  
*Wiss Janney Elstner Associates*  
*Wood*  
*Woolpert Inc.*  
*Worley*  
*Wunderlich-Malec Engineering Inc.*  
*ZGF Architects*  
*Zachry Group*

## B. LATIN AMERICA

### Argentina

*Arcadis North America/Callison RTKL*  
*Bechtel*  
*Black & Veatch*  
*Corgan*  
*Fluor*  
*Gensler*



# Where the 2022 Top 500 Design Firms Worked

## Region Country Company

*Geosyntec Consultants*  
*HOK*  
*KPF Consulting Engineers*  
*LANGAN*  
*Moffatt & Nichol*  
*Mott MacDonald*  
*Ross & Baruzzini Inc.*  
*SB Architects*  
*Sargent & Lundy*  
*Sasaki*  
*Simpson Gumpertz & Heger*  
*Skidmore Owings & Merrill*  
*T.Y. Lin International*  
*TRC Cos. Inc.*  
*Thompson Engineering*  
*Thornton Tomasetti*

## Bolivia

*Arcadis North America/Callison RTKL*  
*Merrick & Co.*  
*Page*  
*T.Y. Lin International*

## Brazil

*Arcadis North America/Callison RTKL*  
*Arup*  
*Black & Veatch*  
*COWI North America*  
*Cardno Inc.*  
*Corgan*  
*Day & Zimmermann*  
*DeSimone Consulting Engineers*  
*Dennis Group*  
*Fluor*  
*Fugro USA*  
*Gensler*  
*Geo-Logic Associates Inc.*  
*Geosyntec Consultants*  
*Ghafari Associates LLC*  
*HGA*  
*IPS-Integrated Project Services LLC*  
*Jacobs*  
*Jensen Hughes*

## Region Country Company

*Kimley-Horn*  
*Kohn Pedersen Fox Associates PC*  
*LANGAN*  
*Landrum & Brown Inc.*  
*Leidos*  
*MBH Architects*  
*Michael Baker International*  
*Moffatt & Nichol*  
*Mott MacDonald*  
*Mueser Rutledge Consulting Engineers*  
*PLLC*  
*Otak Inc.*  
*Perkins&Will*  
*RCM Technologies Inc.*  
*Rebel Design+Group*  
*Sargent & Lundy*  
*Shannon & Wilson Inc.*  
*Syska Hennessy Group*  
*T.Y. Lin International*  
*TRC Cos. Inc.*  
*Terracon Consultants Inc.*  
*Thornton Tomasetti*  
*WSP USA*  
*Waldemar S. Nelson and Co. Inc.*  
*Ware Malcomb*  
*Wiss Janney Elstner Associates*  
*Wood*  
*Worley*

## Chile

*Arcadis North America/Callison RTKL*  
*Barr Engineering Co.*  
*Bechtel*  
*Black & Veatch*  
*CDM Smith*  
*COWI North America*  
*Coffman Engineers Inc.*  
*Fluor*  
*GHD Inc.*  
*Gensler*  
*Ghafari Associates LLC*  
*HOK*

# Where the 2022 Top 500 Design Firms Worked

## Region Country Company

Jacobs  
Jensen Hughes  
KPFF Consulting Engineers  
Leidos  
MBH Architects  
Modjeski and Masters Inc.  
Moffatt & Nichol  
Mott MacDonald  
Otak Inc.  
Pond  
RSP  
Sargent & Lundy  
Sasaki  
Vanderweil Engineers  
WSP USA  
Wiss Janney Elstner Associates  
Wood

## Colombia

Arcadis North America/Callison RTKL  
Arup  
Black & Veatch  
CDM Smith  
DeSimone Consulting Engineers  
Fugro USA  
Gensler  
Greeley and Hansen  
Haskell  
Hazen and Sawyer  
IBI Group Inc.  
Jensen Hughes  
LANGAN  
Landrum & Brown Inc.  
MBH Architects  
Modjeski and Masters Inc.  
Moffatt & Nichol  
Mott MacDonald  
Perkins Eastman  
Pond  
RSP  
S&B Engineers and Constructors Ltd.  
SB Architects

## Region Country Company

Shannon & Wilson Inc.  
Simpson Gumpertz & Heger  
T.Y. Lin International  
Thornton Tomasetti  
WATG  
WSP USA  
Wood

## Costa Rica

Baxter & Woodman Inc.  
CTL/Thompson Inc.  
DLZ Corp.  
Gensler  
Hargrove Engineers + Constructors  
Hart Howerton  
Jensen Hughes  
LANGAN  
Landrum & Brown Inc.  
MBH Architects  
Moffatt & Nichol  
Mott MacDonald  
RSP  
Ross & Baruzzini Inc.  
SB Architects  
Sasaki  
Simpson Gumpertz & Heger  
SmithGroup  
T.Y. Lin International  
TRC Cos. Inc.  
Thornton Tomasetti  
Vanderweil Engineers  
WSP USA  
Walter P Moore  
Wiss Janney Elstner Associates  
Woolpert Inc.

## Ecuador

Arcadis North America/Callison RTKL  
Black & Veatch  
Greeley and Hansen  
Jaros Baum & Bolles  
Jensen Hughes  
Landrum & Brown Inc.

# Where the 2022 Top 500 Design Firms Worked

## Region Country Company

*Moffatt & Nichol*  
*Page*  
*Perkins Eastman*  
*Simpson Gumpertz & Heger*  
*T.Y. Lin International*  
*WSP USA*

## El Salvador

*Arcadis North America/Callison RTKL*  
*Black & Veatch*  
*Fluor*  
*Gensler*  
*Jensen Hughes*  
*Moffatt & Nichol*  
*Mott MacDonald*  
*Ross & Baruzzini Inc.*  
*SB Architects*  
*Sargent & Lundy*

## Guatemala

*Arcadis North America/Callison RTKL*  
*Black & Veatch*  
*CHA Consulting Inc. (CHA)*  
*DLZ Corp.*  
*Gensler*  
*Magnusson Klemencic Associates*  
*Mott MacDonald*  
*Page*  
*Thornton Tomasetti*  
*WSP USA*  
*Walter P Moore*  
*Ware Malcomb*  
*Wood*

## Guyana

*Black & Veatch*  
*DLZ Corp.*  
*Fugro USA*  
*Gensler*  
*HOK*  
*Moffatt & Nichol*  
*WATG*

## Region Country Company

### Honduras

*Arcadis North America/Callison RTKL*  
*Burns & McDonnell*  
*CHA Consulting Inc. (CHA)*  
*DLZ Corp.*  
*Day & Zimmermann*  
*Fluor*  
*Gensler*  
*Haskell*  
*LANGAN*  
*Moffatt & Nichol*  
*Mott MacDonald*  
*Simpson Gumpertz & Heger*  
*Thornton Tomasetti*  
*WSP USA*  
*Walter P Moore*  
*Wiss Janney Elstner Associates*  
*Wood*

### Mexico

*AKF Group*  
*AO Architects*  
*Arcadis North America/Callison RTKL*  
*Barge Design Solutions*  
*Barr Engineering Co.*  
*Bechtel*  
*Black & Veatch*  
*Burns & McDonnell*  
*CHA Consulting Inc. (CHA)*  
*COWI North America*  
*Clark Nexsen*  
*Coffman Engineers Inc.*  
*Corgan*  
*Cushing Terrell*  
*Dennis Group*  
*EN Engineering LLC*  
*Elkus Manfredi Architects*  
*Fluor*  
*Fugro USA*  
*GEI Consultants Inc.*  
*GZA*  
*Gensler*

## Where the 2022 Top 500 Design Firms Worked

### Region Country Company

*Geosyntec Consultants*  
*Ghafari Associates LLC*  
*HKS*  
*HOK*  
*Hanson Professional Services Inc.*  
*Hart Howerton*  
*Haskell*  
*IBI Group Inc.*  
*IMEG Corp.*  
*Jacobs*  
*Jensen Hughes*  
*KPFK Consulting Engineers*  
*Kiewit Corp.*  
*Kimley-Horn*  
*LANGAN*  
*LEO A DALY*  
*LJB Inc.*  
*Leidos*  
*MBH Architects*  
*Magnusson Klemencic Associates*  
*Merrick & Co.*  
*Moffatt & Nichol*  
*Moody Nolan*  
*Mott MacDonald*  
*Ninyo & Moore Geotech. & Enviro.*  
*Sciences*  
*Otak Inc.*  
*Page*  
*Parsons Corp.*  
*Perkins Eastman*  
*Perkins&Will*  
*Pond*  
*Populous*  
*Raba Kistner Inc.*  
*Rebel Design+Group*  
*Ross & Baruzzini Inc.*  
*SB Architects*  
*SCS Engineers*  
*SSOE Group*  
*Salas O'Brien*  
*Sargent & Lundy*  
*Sasaki*

### Region Country Company

*Sheehan Nagle Hartray Architects Ltd.*  
*Simpson Gumpertz & Heger*  
*Skidmore Owings & Merrill*  
*Smith Seckman Reid Inc.*  
*T.Y. Lin International*  
*TPG Architecture LLP*  
*TRC Cos. Inc.*  
*Terracon Consultants Inc.*  
*The Beck Group*  
*Thornton Tomasetti*  
*WATG*  
*WSP USA*  
*Waldemar S. Nelson and Co. Inc.*  
*Walter P Moore*  
*Ware Malcomb*  
*Wiss Janney Elstner Associates*  
*Wood*  
*Worley*

### Nicaragua

*DLZ Corp.*  
*Day & Zimmermann*  
*Gensler*  
*Landrum & Brown Inc.*  
*Moffatt & Nichol*  
*Mott MacDonald*

### Panama

*Arcadis North America/Callison RTKL*  
*Black & Veatch*  
*DLZ Corp.*  
*Fugro USA*  
*Gannett Fleming*  
*Gensler*  
*GeoEngineers Inc.*  
*Geosyntec Consultants*  
*HKS*  
*Hazen and Sawyer*  
*Jensen Hughes*  
*LANGAN*  
*Lanier & Associates Consulting*  
*Engineers Inc.*  
*Magnusson Klemencic Associates*

# Where the 2022 Top 500 Design Firms Worked

## Region Country Company

*Moffatt & Nichol*  
*Mott MacDonald*  
*Mueser Rutledge Consulting Engineers*  
*PLLC*  
*Page*  
*Rebel Design+Group*  
*S&B Engineers and Constructors Ltd.*  
*SB Architects*  
*Sargent & Lundy*  
*Simpson Gumpertz & Heger*  
*T.Y. Lin International*  
*Volkert Inc.*  
*WATG*  
*WSP USA*  
*Walker Consultants*  
*Walter P Moore*  
*Ware Malcomb*

## Paraguay

*CHA Consulting Inc. (CHA)*  
*Gensler*  
*KPF Consulting Engineers*  
*Ross & Baruzzini Inc.*  
*ZGF Architects*

## Peru

*Arcadis North America/Callison RTKL*  
*Bechtel*  
*Black & Veatch*  
*Fluor*  
*Fugro USA*  
*Gensler*  
*Geo-Logic Associates Inc.*  
*Geosyntec Consultants*  
*Jacobs*  
*Kohn Pedersen Fox Associates PC*  
*MBH Architects*  
*Martin/Martin Inc.*  
*Moffatt & Nichol*  
*Mott MacDonald*  
*Page*  
*Perkins Eastman*  
*Robert A.M. Stern Architects*

## Region Country Company

*Sargent & Lundy*  
*Sasaki*  
*Simpson Gumpertz & Heger*  
*T.Y. Lin International*  
*TLC Engineering Solutions Inc.*  
*TRC Cos. Inc.*  
*Thompson Engineering*  
*WATG*  
*WSP USA*  
*Wood*

## Suriname

*Arcadis North America/Callison RTKL*  
*Fugro USA*  
*WSP USA*

## Uruguay

*Arcadis North America/Callison RTKL*  
*Corgan*  
*Gensler*  
*Humphreys & Partners Architects*  
*Jensen Hughes*  
*Mott MacDonald*  
*SmithGroup*  
*T.Y. Lin International*  
*Terracon Consultants Inc.*  
*Vanderweil Engineers*  
*WSP USA*

## Venezuela

*Arcadis North America/Callison RTKL*

## C. CARIBBEAN ISLANDS

### Cuba

*Burns & McDonnell*  
*Coffman Engineers Inc.*  
*Collins Engineers Inc.*  
*Jensen Hughes*  
*Kimley-Horn*  
*LEO A DALY*  
*Michael Baker International*



# Where the 2022 Top 500 Design Firms Worked

## Region Country Company

*Moffatt & Nichol*  
*Pond*  
*Stanley Consultants*  
*TLC Engineering Solutions Inc.*  
*TRC Cos. Inc.*  
*Terracon Consultants Inc.*

## Greater Antilles

*Arcadis North America/Callison RTKL*  
*Barr Engineering Co.*  
*Black & Veatch*  
*EXP*  
*Fugro USA*  
*Gensler*  
*HOK*  
*Hargrove Engineers + Constructors*  
*Hart Howerton*  
*Haskell*  
*IBI Group Inc.*  
*Jensen Hughes*  
*KTGY Architecture + Planning*  
*LEO A DALY*  
*Michael Baker International*  
*Moffatt & Nichol*  
*Mott MacDonald*  
*Rebel Design+Group*  
*Sargent & Lundy*  
*Sasaki*  
*Simpson Gumpertz & Heger*  
*Stanley Consultants*  
*T.Y. Lin International*  
*TLC Engineering Solutions Inc.*  
*Thornton Tomasetti*  
*V3 Cos.*  
*Walter P Moore*  
*Wiss Janney Elstner Associates*  
*Wood*

## Lesser Antilles

*Arcadis North America/Callison RTKL*  
*BRPH Cos. Inc.*  
*Barr Engineering Co.*  
*Bechtel*

## Region Country Company

*Black & Veatch*  
*Burns & McDonnell*  
*CHA Consulting Inc. (CHA)*  
*Collins Engineers Inc.*  
*Corgan*  
*DLR Group*  
*DeSimone Consulting Engineers*  
*EXP*  
*Francis Cauffman Architects*  
*Fugro USA*  
*GEI Consultants Inc.*  
*Gensler*  
*Geosyntec Consultants*  
*HKS*  
*HOK*  
*Hanson Professional Services Inc.*  
*Hart Howerton*  
*Haskell*  
*Jacobs*  
*Jaros Baum & Bolles*  
*Jensen Hughes*  
*Kimley-Horn*  
*LANGAN*  
*LEO A DALY*  
*Landrum & Brown Inc.*  
*Leidos*  
*Moffatt & Nichol*  
*Mott MacDonald*  
*NORR*  
*Page*  
*Parsons Corp.*  
*Perkins Eastman*  
*Perkins&Will*  
*Rebel Design+Group*  
*S&B Engineers and Constructors Ltd.*  
*SB Architects*  
*STUDIOS architecture*  
*Salas O'Brien*  
*Sargent & Lundy*  
*Smith Seckman Reid Inc.*  
*Stanley Consultants*  
*T.Y. Lin International*

# Where the 2022 Top 500 Design Firms Worked

## Region Country Company

*TRC Cos. Inc.*  
*Terracon Consultants Inc.*  
*Thornton Tomasetti*  
*Vanderweil Engineers*  
*WATG*  
*WSP USA*  
*Waldemar S. Nelson and Co. Inc.*  
*Wiss Janney Elstner Associates*  
*Woolpert Inc.*

## Puerto Rico

*AKF Group*  
*Arcadis North America/Callison RTKL*  
*BCC Engineering Inc.*  
*BRPH Cos. Inc.*  
*Black & Veatch*  
*Burns & McDonnell*  
*CDM Smith*  
*CPH Inc.*  
*CRB*  
*Civil & Environmental Consultants Inc.*  
*Coffman Engineers Inc.*  
*Collins Engineers Inc.*  
*DLR Group*  
*Dattner Architects*  
*Day & Zimmermann*  
*DeSimone Consulting Engineers*  
*EXP*  
*Engineering Consulting Services (ECS)*  
*Farnsworth Group Inc.*  
*Fluor*  
*Gensler*  
*Geosyntec Consultants*  
*Hanson Professional Services Inc.*  
*Hart Howerton*  
*Jacobs*  
*Jensen Hughes*  
*Kimley-Horn*  
*LANGAN*  
*LEO A DALY*  
*McLaren Engineering Group*  
*Merrick & Co.*

## Region Country Company

*Moffatt & Nichol*  
*Newcomb & Boyd*  
*Parsons Corp.*  
*Perkins Eastman*  
*Pond*  
*RCM Technologies Inc.*  
*Rebel Design+Group*  
*SB Architects*  
*Sargent & Lundy*  
*TRC Cos. Inc.*  
*The Vertex Cos. Inc.*  
*Thornton Tomasetti*  
*Vanderweil Engineers*  
*WATG*  
*WSP USA*  
*Ware Malcomb*  
*Wiss Janney Elstner Associates*  
*Wood*  
*Woolpert Inc.*

## D. EUROPE

### Albania

*LANGAN*  
*SB Architects*  
*WATG*

### Armenia

*Black & Veatch*  
*Jacobs*  
*Rebel Design+Group*  
*TRC Cos. Inc.*

### Austria

*Black & Veatch*  
*Burns & McDonnell*  
*CRB*  
*Coffman Engineers Inc.*  
*EnSafe Inc.*  
*HOK*  
*Jacobs*  
*Jensen Hughes*

# Where the 2022 Top 500 Design Firms Worked

## Region Country Company

*Kohn Pedersen Fox Associates PC*  
*MBH Architects*  
*Mott MacDonald*  
*Perkins Eastman*  
*Rebel Design+Group*  
*TRC Cos. Inc.*

## Azerbaijan

*Arcadis North America/Callison RTKL*  
*Bechtel*  
*Corgan*  
*Gensler*  
*Jacobs*  
*Jensen Hughes*  
*Perkins Eastman*  
*Sargent & Lundy*  
*Thornton Tomasetti*  
*WSP USA*  
*Wood*

## Belarus

*MBH Architects*  
*Perkins&Will*  
*Thornton Tomasetti*

## Belgium

*Arcadis North America/Callison RTKL*  
*Barr Engineering Co.*  
*Black & Veatch*  
*Burns & McDonnell*  
*CRB*  
*Coffman Engineers Inc.*  
*Fluor*  
*Gensler*  
*Geosyntec Consultants*  
*HDR*  
*HOK*  
*IPS-Integrated Project Services LLC*  
*Jacobs*  
*Jensen Hughes*  
*MBH Architects*  
*Page*  
*Perkins Eastman*

## Region Country Company

*Perkins&Will*  
*Simpson Gumpertz & Heger*  
*Skidmore Owings & Merrill*  
*SmithGroup*  
*Syska Hennessy Group*  
*WSP USA*  
*Wood*

## Bosnia & Herzegovina

*CRB*  
*LANGAN*  
*Perkins&Will*  
*Wiss Janney Elstner Associates*

## Bulgaria

*Black & Veatch*  
*Geo-Logic Associates Inc.*  
*HOK*  
*MBH Architects*  
*TRC Cos. Inc.*  
*Wood*

## Croatia

*HOK*  
*Jacobs*  
*Jensen Hughes*  
*Moffatt & Nichol*

## Czech Rep.

*Arcadis North America/Callison RTKL*  
*Corgan*  
*EN Engineering LLC*  
*EnSafe Inc.*  
*Gensler*  
*HOK*  
*Jensen Hughes*  
*MBH Architects*  
*Perkins Eastman*  
*Perkins&Will*  
*Rebel Design+Group*  
*TRC Cos. Inc.*  
*Wood*  
*Zachry Group*

# Where the 2022 Top 500 Design Firms Worked

## Region Country Company

### Denmark

*Arcadis North America/Callison RTKL*  
*COWI North America*  
*Corgan*  
*Day & Zimmermann*  
*EXP*  
*EnSafe Inc.*  
*Fluor*  
*Fugro USA*  
*Gensler*  
*Geosyntec Consultants*  
*HDR*  
*HOK*  
*IPS-Integrated Project Services LLC*  
*Jacobs*  
*Jensen Hughes*  
*MBH Architects*  
*Merrick & Co.*  
*Parsons Corp.*  
*Perkins&Will*  
*Rebel Design+Group*  
*Sheehan Nagle Hartray Architects Ltd.*  
*TRC Cos. Inc.*  
*Thornton Tomasetti*  
*WSP USA*  
*Wood*

### Estonia

*Black & Veatch*  
*HDR*  
*LANGAN*  
*MBH Architects*  
*Thornton Tomasetti*

### Finland

*Arcadis North America/Callison RTKL*  
*Fluor*  
*Gensler*  
*Ghafari Associates LLC*  
*HDR*  
*HLW*  
*HOK*

## Region Country Company

*Jacobs*  
*Jensen Hughes*  
*MBH Architects*  
*Martin/Martin Inc.*  
*Perkins&Will*  
*Rebel Design+Group*  
*Simpson Gumpertz & Heger*  
*TRC Cos. Inc.*  
*Thornton Tomasetti*

### France

*Arcadis North America/Callison RTKL*  
*Burns & McDonnell*  
*COWI North America*  
*CRB*  
*Corgan*  
*Fluor*  
*Gensler*  
*Geosyntec Consultants*  
*HDR*  
*HKS*  
*HOK*  
*Hargrove Engineers + Constructors*  
*IPS-Integrated Project Services LLC*  
*Integral Group*  
*Jacobs*  
*Jensen Hughes*  
*KPF Consulting Engineers*  
*Kohn Pedersen Fox Associates PC*  
*LANGAN*  
*MBH Architects*  
*Parsons Corp.*  
*Perkins Eastman*  
*Perkins&Will*  
*Populous*  
*STUDIOS architecture*  
*Sanborn Head & Associates Inc.*  
*Sheehan Nagle Hartray Architects Ltd.*  
*Simpson Gumpertz & Heger*  
*Skidmore Owings & Merrill*  
*T.Y. Lin International*  
*TRC Cos. Inc.*

# Where the 2022 Top 500 Design Firms Worked

## Region Country Company

*Thornton Tomasetti*  
*WATG*  
*WSP USA*  
*Wiss Janney Elstner Associates*  
*Wood*  
*Woolpert Inc.*

## Georgia

*Burns & McDonnell*  
*CDM Smith*  
*Gensler*  
*Haskell*  
*Moffatt & Nichol*  
*Otak Inc.*  
*T.Y. Lin International*  
*WATG*  
*ZGF Architects*

## Germany

*Affiliated Engineers Inc.*  
*Arcadis North America/Callison RTKL*  
*Black & Veatch*  
*Burns & McDonnell*  
*CDM Smith*  
*COWI North America*  
*CRB*  
*Coffman Engineers Inc.*  
*Corgan*  
*Dewberry*  
*EXP*  
*Fluor*  
*Fugro USA*  
*Gensler*  
*Geosyntec Consultants*  
*Ghafari Associates LLC*  
*Gresham Smith*  
*HDR*  
*HOK*  
*IPS-Integrated Project Services LLC*  
*Jacobs*  
*Jensen Hughes*  
*Kohn Pedersen Fox Associates PC*  
*LANGAN*

## Region Country Company

*MBH Architects*  
*Martin/Martin Inc.*  
*McLaren Engineering Group*  
*Michael Baker International*  
*Moffatt & Nichol*  
*Page*  
*Parsons Corp.*  
*Perkins Eastman*  
*Perkins&Will*  
*Populous*  
*Rebel Design+Group*  
*Robert A.M. Stern Architects*  
*Ross & Baruzzini Inc.*  
*Smith Seckman Reid Inc.*  
*Stellar*  
*Syska Hennessy Group*  
*TEECOM*  
*TLC Engineering Solutions Inc.*  
*TRC Cos. Inc.*  
*Tetra Tech Inc.*  
*Thornton Tomasetti*  
*WSP USA*  
*Wiss Janney Elstner Associates*  
*Wood*  
*Woolpert Inc.*

## Greece

*CHA Consulting Inc. (CHA)*  
*COWI North America*  
*Day & Zimmermann*  
*Fluor*  
*Gensler*  
*HKS*  
*HOK*  
*IBI Group Inc.*  
*Integral Group*  
*Jacobs*  
*Jensen Hughes*  
*Kimley-Horn*  
*LANGAN*  
*MBH Architects*  
*Martin/Martin Inc.*



# Where the 2022 Top 500 Design Firms Worked

## Region Country Company

*Michael Baker International*  
*Moffatt & Nichol*  
*Parsons Corp.*  
*Perkins Eastman*  
*Perkins&Will*  
*Populous*  
*Robert A.M. Stern Architects*  
*Sasaki*  
*TLC Engineering Solutions Inc.*  
*TRC Cos. Inc.*  
*Thornton Tomasetti*  
*WATG*

## Hungary

*Arcadis North America/Callison RTKL*  
*Black & Veatch*  
*Fluor*  
*Ghafari Associates LLC*  
*HOK*  
*Jensen Hughes*  
*MBH Architects*  
*Perkins Eastman*  
*Perkins&Will*  
*Populous*  
*TRC Cos. Inc.*  
*Thornton Tomasetti*  
*WSP USA*  
*Wood*

## Ireland

*Affiliated Engineers Inc.*  
*Arcadis North America/Callison RTKL*  
*BHDP Architecture*  
*Bechtel*  
*Black & Veatch*  
*Burns & McDonnell*  
*CDM Smith*  
*COWI North America*  
*CRB*  
*Corgan*  
*Farnsworth Group Inc.*  
*Fluor*  
*Fugro USA*

## Region Country Company

*GEI Consultants Inc.*  
*Gensler*  
*Geosyntec Consultants*  
*Ghafari Associates LLC*  
*Gresham Smith*  
*HDR*  
*HGA*  
*HOK*  
*IBI Group Inc.*  
*IPS-Integrated Project Services LLC*  
*Jacobs*  
*Jensen Hughes*  
*KPF Consulting Engineers*  
*Kohn Pedersen Fox Associates PC*  
*LANGAN*  
*MBH Architects*  
*Moffatt & Nichol*  
*Page*  
*Parsons Corp.*  
*Perkins Eastman*  
*Perkins&Will*  
*Populous*  
*Robert A.M. Stern Architects*  
*STUDIOS architecture*  
*Sheehan Nagle Hartray Architects Ltd.*  
*Stanley Consultants*  
*TRC Cos. Inc.*  
*Terracon Consultants Inc.*  
*Tetra Tech Inc.*  
*Thornton Tomasetti*  
*WSP USA*  
*Walter P Moore*  
*Wiss Janney Elstner Associates*  
*Wood*

## Italy

*Arcadis North America/Callison RTKL*  
*Burns & McDonnell*  
*Clark Nexsen*  
*Collins Engineers Inc.*  
*Day & Zimmermann*  
*EnSafe Inc.*

# Where the 2022 Top 500 Design Firms Worked

## Region Country Company

*Fluor*  
*Gensler*  
*Ghafari Associates LLC*  
*HDR*  
*HKS*  
*HLW*  
*HOK*  
*IPS-Integrated Project Services LLC*  
*Integral Group*  
*Jacobs*  
*Jensen Hughes*  
*KPF Consulting Engineers*  
*Kohn Pedersen Fox Associates PC*  
*LANGAN*  
*MBH Architects*  
*Michael Baker International*  
*Page*  
*Parkhill*  
*Perkins&Will*  
*Pond*  
*Populous*  
*Rebel Design+Group*  
*Robert A.M. Stern Architects*  
*SB Architects*  
*Sanborn Head & Associates Inc.*  
*Sargent & Lundy*  
*Simpson Gumpertz & Heger*  
*Skidmore Owings & Merrill*  
*SmithGroup*  
*Stanley Consultants*  
*TEECOM*  
*TLC Engineering Solutions Inc.*  
*Thornton Tomasetti*  
*WATG*  
*WSP USA*  
*Waldemar S. Nelson and Co. Inc.*  
*Wiss Janney Elstner Associates*  
*Wood*

## Latvia

*Black & Veatch*  
*Gensler*

## Region Country Company

*Ghafari Associates LLC*  
*Jensen Hughes*  
*MBH Architects*  
*Moffatt & Nichol*

## Lithuania

*Black & Veatch*  
*Fluor*  
*Gensler*  
*HOK*  
*Moffatt & Nichol*  
*Populous*

## Moldova

*Walker Consultants*  
*ZGF Architects*

## Netherlands

*Arcadis North America/Callison RTKL*  
*Black & Veatch*  
*Burns & McDonnell*  
*COWI North America*  
*CRB*  
*Day & Zimmermann*  
*EN Engineering LLC*  
*EXP*  
*Fluor*  
*Gensler*  
*Geosyntec Consultants*  
*HDR*  
*HKS*  
*HOK*  
*Hargrove Engineers + Constructors*  
*IPS-Integrated Project Services LLC*  
*Jacobs*  
*Jensen Hughes*  
*Kohn Pedersen Fox Associates PC*  
*MBH Architects*  
*Moffatt & Nichol*  
*Pond*  
*RCM Technologies Inc.*  
*Rebel Design+Group*  
*Sheehan Nagle Hartray Architects Ltd.*

# Where the 2022 Top 500 Design Firms Worked

## Region Country Company

*Smith Seckman Reid Inc.*  
*TRC Cos. Inc.*  
*Thornton Tomasetti*  
*WSP USA*  
*Wiss Janney Elstner Associates*

## Norway

*Black & Veatch*  
*COWI North America*  
*Fluor*  
*Gensler*  
*Geosyntec Consultants*  
*HKS*  
*HOK*  
*Jensen Hughes*  
*MBH Architects*  
*Perkins&Will*  
*Rebel Design+Group*  
*Sheehan Nagle Hartray Architects Ltd.*  
*Stanley Consultants*  
*TRC Cos. Inc.*  
*Thornton Tomasetti*  
*WATG*  
*WSP USA*

## Poland

*Arcadis North America/Callison RTKL*  
*Bechtel*  
*Black & Veatch*  
*Burns & McDonnell*  
*CDM Smith*  
*Fluor*  
*Gensler*  
*HDR*  
*HLW*  
*HOK*  
*Jacobs*  
*Jensen Hughes*  
*Kohn Pedersen Fox Associates PC*  
*MBH Architects*  
*Moffatt & Nichol*  
*Perkins&Will*  
*Sheehan Nagle Hartray Architects Ltd.*

## Region Country Company

*Skidmore Owings & Merrill*  
*T.Y. Lin International*  
*TRC Cos. Inc.*  
*Thornton Tomasetti*  
*WSP USA*  
*Wiss Janney Elstner Associates*  
*Wood*

## Portugal

*Arcadis North America/Callison RTKL*  
*CRB*  
*Dennis Group*  
*Gensler*  
*Hart Howerton*  
*IPS-Integrated Project Services LLC*  
*Jensen Hughes*  
*Kohn Pedersen Fox Associates PC*  
*MBH Architects*  
*Populous*  
*Rebel Design+Group*  
*SB Architects*  
*T.Y. Lin International*  
*TRC Cos. Inc.*  
*Thornton Tomasetti*  
*WATG*  
*Wood*

## Romania

*Black & Veatch*  
*Gensler*  
*HOK*  
*MBH Architects*  
*Sargent & Lundy*  
*TRC Cos. Inc.*  
*WATG*  
*Wood*

## Russia

*Arcadis North America/Callison RTKL*  
*Barr Engineering Co.*  
*CTL/Thompson Inc.*  
*Day & Zimmermann*  
*Fluor*

# Where the 2022 Top 500 Design Firms Worked

## Region Country Company

*Gensler*  
*HKS*  
*HOK*  
*Jensen Hughes*  
*MBH Architects*  
*Perkins&Will*  
*Populous*  
*Robert A.M. Stern Architects*  
*SB Architects*  
*Simpson Gumpertz & Heger*  
*Skidmore Owings & Merrill*  
*Stellar*  
*TRC Cos. Inc.*  
*Terracon Consultants Inc.*  
*Thornton Tomasetti*  
*WATG*

## Serbia

*Arcadis North America/Callison RTKL*  
*Bechtel*  
*Black & Veatch*  
*Day & Zimmermann*  
*Gensler*  
*HOK*  
*Integral Group*  
*Jensen Hughes*  
*Newcomb & Boyd*  
*RCM Technologies Inc.*  
*WATG*  
*Walter P Moore*

## Slovakia

*Arcadis North America/Callison RTKL*  
*Burns & McDonnell*  
*Gensler*  
*HOK*  
*Jacobs*  
*Jensen Hughes*  
*LANGAN*  
*MBH Architects*  
*T.Y. Lin International*  
*TRC Cos. Inc.*  
*Wood*

## Region Country Company

### Slovenia

*HDR*  
*Jensen Hughes*  
*SSOE Group*  
*Sargent & Lundy*  
*Wiss Janney Elstner Associates*  
*Zachry Group*

### Spain

*Arcadis North America/Callison RTKL*  
*Barr Engineering Co.*  
*Black & Veatch*  
*COWI North America*  
*Clark Nexsen*  
*Fluor*  
*Gensler*  
*HDR*  
*HKS*  
*HOK*  
*IMEG Corp.*  
*IPS-Integrated Project Services LLC*  
*Integral Group*  
*Jacobs*  
*Jensen Hughes*  
*Kimley-Horn*  
*Kohn Pedersen Fox Associates PC*  
*LaBella Associates D.P.C.*  
*MBH Architects*  
*Michael Baker International*  
*Moffatt & Nichol*  
*Page*  
*Perkins Eastman*  
*Perkins&Will*  
*RCM Technologies Inc.*  
*Rebel Design+Group*  
*Ross & Baruzzini Inc.*  
*SB Architects*  
*Sheehan Nagle Hartray Architects Ltd.*  
*Stanley Consultants*  
*T.Y. Lin International*  
*TLC Engineering Solutions Inc.*  
*TRC Cos. Inc.*

# Where the 2022 Top 500 Design Firms Worked

## Region Country Company

*WATG*  
*WSP USA*  
*Wiss Janney Elstner Associates*  
*Wood*  
*Worley*  
*Zachry Group*

## Sweden

*Arcadis North America/Callison RTKL*  
*CHA Consulting Inc. (CHA)*  
*COWI North America*  
*Fluor*  
*Gensler*  
*Geosyntec Consultants*  
*HDR*  
*HOK*  
*Jacobs*  
*Jensen Hughes*  
*MBH Architects*  
*Moffatt & Nichol*  
*Perkins&Will*  
*Rebel Design+Group*  
*Sheehan Nagle Hartray Architects Ltd.*  
*Simpson Gumpertz & Heger*  
*Skidmore Owings & Merrill*  
*T.Y. Lin International*  
*TRC Cos. Inc.*  
*Thornton Tomasetti*  
*WSP USA*  
*Wood*

## Switzerland

*Arcadis North America/Callison RTKL*  
*Burns & McDonnell*  
*CRB*  
*Corgan*  
*Fluor*  
*Gensler*  
*HDR*  
*HKS*  
*HOK*  
*IPS-Integrated Project Services LLC*  
*Jacobs*

## Region Country Company

*Jensen Hughes*  
*LANGAN*  
*MBH Architects*  
*Moffatt & Nichol*  
*Perkins&Will*  
*Populous*  
*Rebel Design+Group*  
*SB Architects*  
*Skidmore Owings & Merrill*  
*WSP USA*  
*Wood*

## Ukraine

*Bechtel*  
*Black & Veatch*  
*Day & Zimmermann*  
*MBH Architects*  
*Parsons Corp.*  
*Perkins Eastman*  
*Perkins&Will*  
*STUDIOS architecture*  
*Sargent & Lundy*

## United Kingdom

*Affiliated Engineers Inc.*  
*Arcadis North America/Callison RTKL*  
*BHDP Architecture*  
*BRPH Cos. Inc.*  
*Bechtel*  
*Black & Veatch*  
*Burns & McDonnell*  
*COWI North America*  
*CRB*  
*Corgan*  
*Cunningham*  
*DeSimone Consulting Engineers*  
*Fluor*  
*Fugro USA*  
*Gensler*  
*Geosyntec Consultants*  
*HDR*  
*HKS*  
*HLW*

## Where the 2022 Top 500 Design Firms Worked

### Region Country Company

*HOK*  
*Hardesty & Hanover LLC*  
*Hargrove Engineers + Constructors*  
*Hart Howerton*  
*IBI Group Inc.*  
*IPS-Integrated Project Services LLC*  
*Integral Group*  
*Jacobs*  
*Jensen Hughes*  
*KPFK Consulting Engineers*  
*KZF Design*  
*Kimley-Horn*  
*Kohn Pedersen Fox Associates PC*  
*LANGAN*  
*Leidos*  
*MBH Architects*  
*ME Engineers*  
*McLaren Engineering Group*  
*Merrick & Co.*  
*Michael Baker International*  
*Moffatt & Nichol*  
*Mott MacDonald*  
*NORR*  
*Otak Inc.*  
*Page*  
*Parsons Corp.*  
*Perkins Eastman*  
*Perkins&Will*  
*Pond*  
*Populous*  
*RCM Technologies Inc.*  
*RSP*  
*Rebel Design+Group*  
*Robert A.M. Stern Architects*  
*Sargent & Lundy*  
*Sheehan Nagle Hartray Architects Ltd.*  
*Shepley Bulfinch*  
*Simpson Gumpertz & Heger*  
*Skidmore Owings & Merrill*  
*Stanley Consultants*  
*Syska Hennessy Group*  
*TEECOM*

### Region Country Company

*TLC Engineering Solutions Inc.*  
*TPG Architecture LLP*  
*TRC Cos. Inc.*  
*Terracon Consultants Inc.*  
*Tetra Tech Inc.*  
*Thornton Tomasetti*  
*WATG*  
*WSP USA*  
*Wiss Janney Elstner Associates*  
*Wood*  
*Woolpert Inc.*  
*Worley*

## E. MIDDLE EAST

### Afghanistan

*Black & Veatch*  
*CHA Consulting Inc. (CHA)*  
*Day & Zimmermann*  
*Pond*  
*Sasaki*  
*Thornton Tomasetti*

### Bahrain

*Bechtel*  
*CHA Consulting Inc. (CHA)*  
*Gensler*  
*HDR*  
*HOK*  
*Jacobs*  
*Jensen Hughes*  
*MBH Architects*  
*Parsons Corp.*  
*Perkins Eastman*  
*Perkins&Will*  
*Populous*  
*Skidmore Owings & Merrill*  
*Stanley Consultants*  
*WATG*  
*Worley*



# Where the 2022 Top 500 Design Firms Worked

## Region Country Company

### Cyprus

*Day & Zimmermann*  
*HKS*  
*Jensen Hughes*  
*LANGAN*  
*MBH Architects*  
*SB Architects*  
*Thornton Tomasetti*  
*WATG*  
*WSP USA*

### Iraq

*Black & Veatch*  
*CHA Consulting Inc. (CHA)*  
*COWI North America*  
*Day & Zimmermann*  
*EYP Architecture & Engineering*  
*Fluor*  
*Ghafari Associates LLC*  
*HKS*  
*Jacobs*  
*Moffatt & Nichol*  
*Parsons Corp.*  
*RCM Technologies Inc.*  
*Sargent & Lundy*  
*Thornton Tomasetti*

### Israel

*Affiliated Engineers Inc.*  
*Arcadis North America/Callison RTKL*  
*Black & Veatch*  
*CDM Smith*  
*CHA Consulting Inc. (CHA)*  
*HDR*  
*HOK*  
*Hazen and Sawyer*  
*IBI Group Inc.*  
*Jacobs*  
*Jensen Hughes*  
*Kohn Pedersen Fox Associates PC*  
*MBH Architects*  
*Modjeski and Masters Inc.*

## Region Country Company

*Moffatt & Nichol*  
*Page*  
*Perkins Eastman*  
*Populous*  
*Robert A.M. Stern Architects*  
*SSOE Group*  
*Sargent & Lundy*  
*Simpson Gumpertz & Heger*  
*Skidmore Owings & Merrill*  
*Syska Hennessy Group*  
*TLC Engineering Solutions Inc.*  
*TRC Cos. Inc.*  
*Thornton Tomasetti*  
*WSP USA*

### Jordan

*Barr Engineering Co.*  
*CDM Smith*  
*Geosyntec Consultants*  
*HOK*  
*Hargrove Engineers + Constructors*  
*Jacobs*  
*Jensen Hughes*  
*LANGAN*  
*Magnusson Klemencic Associates*  
*Michael Baker International*  
*Page*  
*Perkins Eastman*  
*Perkins&Will*  
*Sargent & Lundy*  
*Stanley Consultants*  
*T.Y. Lin International*  
*TRC Cos. Inc.*  
*Vanderweil Engineers*  
*Wiss Janney Elstner Associates*

### Kuwait

*Arcadis North America/Callison RTKL*  
*CDM Smith*  
*Fluor*  
*Geosyntec Consultants*  
*HOK*  
*Hanson Professional Services Inc.*

# Where the 2022 Top 500 Design Firms Worked

## Region Country Company

*Jacobs*  
*Jensen Hughes*  
*Kohn Pedersen Fox Associates PC*  
*MBH Architects*  
*Michael Baker International*  
*Moody Nolan*  
*Page*  
*Parsons Corp.*  
*Perkins Eastman*  
*Perkins&Will*  
*Rebel Design+Group*  
*Skidmore Owings & Merrill*  
*T.Y. Lin International*  
*Thornton Tomasetti*  
*WSP USA*  
*Walker Consultants*  
*Wiss Janney Elstner Associates*  
*Wood*  
*Worley*

## Lebanon

*Day & Zimmermann*  
*HOK*  
*Jensen Hughes*  
*Page*  
*Sasaki*  
*T.Y. Lin International*  
*Tetra Tech Inc.*  
*Thornton Tomasetti*  
*Wiss Janney Elstner Associates*

## Oman

*Bechtel*  
*Black & Veatch*  
*CDM Smith*  
*Fluor*  
*Gensler*  
*Ghafari Associates LLC*  
*HOK*  
*Jensen Hughes*  
*LANGAN*  
*MBH Architects*  
*Parsons Corp.*

## Region Country Company

*Perkins Eastman*  
*Perkins&Will*  
*Skidmore Owings & Merrill*  
*Tetra Tech Inc.*  
*Wood*

## Pakistan

*AI Engineers Inc.*  
*Barr Engineering Co.*  
*Black & Veatch*  
*CDM Smith*  
*HKS*  
*HOK*  
*Hanson Professional Services Inc.*  
*Jensen Hughes*  
*Page*  
*Sargent & Lundy*  
*Schmidt Associates*  
*T.Y. Lin International*  
*WATG*  
*Wood*

## Qatar

*BRPH Cos. Inc.*  
*Black & Veatch*  
*Burns & McDonnell*  
*CDM Smith*  
*COWI North America*  
*Cunningham*  
*Day & Zimmermann*  
*Flad Architects*  
*Fluor*  
*Gannett Fleming*  
*HDR*  
*HKS*  
*HOK*  
*Jacobs*  
*Jensen Hughes*  
*LANGAN*  
*LEO A DALY*  
*Landrum & Brown Inc.*  
*MBH Architects*  
*Michael Baker International*

## Where the 2022 Top 500 Design Firms Worked

### Region Country Company

*Moffatt & Nichol*  
*Moody Nolan*  
*Mott MacDonald*  
*Page*  
*Parsons Corp.*  
*Perkins Eastman*  
*Perkins&Will*  
*Rebel Design+Group*  
*Ross & Baruzzini Inc.*  
*Sargent & Lundy*  
*Simpson Gumpertz & Heger*  
*SmithGroup*  
*Thornton Tomasetti*  
*WATG*  
*Wiss Janney Elstner Associates*  
*Wood*

### Saudi Arabia

*Arcadis North America/Callison RTKL*  
*Ayers Saint Gross*  
*BRPH Cos. Inc.*  
*Bechtel*  
*Black & Veatch*  
*Burns & McDonnell*  
*CDM Smith*  
*CHA Consulting Inc. (CHA)*  
*COWI North America*  
*Cooper Carry*  
*Corgan*  
*DLR Group*  
*Day & Zimmermann*  
*Fluor*  
*GEI Consultants Inc.*  
*Gensler*  
*GeoEngineers Inc.*  
*Geosyntec Consultants*  
*Ghafari Associates LLC*  
*HDR*  
*HKS*  
*HOK*  
*IBI Group Inc.*  
*Integral Group*

### Region Country Company

*Jacobs*  
*Jaros Baum & Bolles*  
*Jensen Hughes*  
*KPF Consulting Engineers*  
*LANGAN*  
*LEO A DALY*  
*Landrum & Brown Inc.*  
*Leidos*  
*MBH Architects*  
*ME Engineers*  
*McLaren Engineering Group*  
*Michael Baker International*  
*Moffatt & Nichol*  
*Moody Nolan*  
*Morrison Hershfield*  
*Mott MacDonald*  
*NORR*  
*Page*  
*Parsons Corp.*  
*Perkins Eastman*  
*Perkins&Will*  
*Populous*  
*Rebel Design+Group*  
*Robert A.M. Stern Architects*  
*Ross & Baruzzini Inc.*  
*SB Architects*  
*SYSTRA USA*  
*Sargent & Lundy*  
*Sasaki*  
*Simpson Gumpertz & Heger*  
*Skidmore Owings & Merrill*  
*Stanley Consultants*  
*Syska Hennessy Group*  
*T.Y. Lin International*  
*TEECOM*  
*Terracon Consultants Inc.*  
*Thornton Tomasetti*  
*Vanderweil Engineers*  
*WATG*  
*Walker Consultants*  
*Ware Malcomb*  
*Wiss Janney Elstner Associates*

# Where the 2022 Top 500 Design Firms Worked

## Region Country Company

Wood  
Worley  
Zachry Group

## Turkey

Black & Veatch  
CHA Consulting Inc. (CHA)  
Fluor  
Gensler  
Geo-Logic Associates Inc.  
Ghafari Associates LLC  
HDR  
HKS  
Jensen Hughes  
KPFF Consulting Engineers  
Kohn Pedersen Fox Associates PC  
Leidos  
MBH Architects  
Michael Baker International  
Moffatt & Nichol  
Page  
Parsons Corp.  
Perkins Eastman  
Perkins&Will  
Robert A.M. Stern Architects  
Sargent & Lundy  
Simpson Gumpertz & Heger  
Skidmore Owings & Merrill  
TRC Cos. Inc.  
Thornton Tomasetti  
WATG  
WSP USA  
Wood

## United Arab Emirates

Arcadis North America/Callison RTKL  
Bechtel  
Black & Veatch  
Burns & McDonnell  
CDM Smith  
COWI North America  
Coffman Engineers Inc.  
Cushing Terrell

## Region Country Company

DLR Group  
DeSimone Consulting Engineers  
ENERCON  
Fluor  
Gensler  
Geosyntec Consultants  
Ghafari Associates LLC  
HDR  
HKS  
HOK  
IBI Group Inc.  
Jacobs  
Jensen Hughes  
KPFF Consulting Engineers  
Kirksey Architects Inc.  
Kohn Pedersen Fox Associates PC  
LANGAN  
LEO A DALY  
Landrum & Brown Inc.  
MBH Architects  
McLaren Engineering Group  
Moffatt & Nichol  
Moody Nolan  
Mott MacDonald  
NORR  
NV5 Global Inc.  
Page  
Parsons Corp.  
Perkins Eastman  
Perkins&Will  
Populous  
Rebel Design+Group  
Ross & Baruzzini Inc.  
SB Architects  
SYSTRA USA  
Sargent & Lundy  
Sasaki  
Simpson Gumpertz & Heger  
Skidmore Owings & Merrill  
Stanley Consultants  
Syska Hennessy Group  
T.Y. Lin International

# Where the 2022 Top 500 Design Firms Worked

## Region Country Company

*TRC Cos. Inc.*  
*Thornton Tomasetti*  
*WATG*  
*WSP USA*  
*Walker Consultants*  
*Walter P Moore*  
*Wiss Janney Elstner Associates*  
*Wood*  
*Zachry Group*

## F. ASIA

### Bangladesh

*Black & Veatch*  
*COWI North America*  
*HOK*  
*Jensen Hughes*  
*Perkins Eastman*  
*Sargent & Lundy*  
*Skidmore Owings & Merrill*  
*TRC Cos. Inc.*  
*Thornton Tomasetti*  
*WATG*  
*Wiss Janney Elstner Associates*

### Cambodia

*Gensler*  
*Jensen Hughes*  
*Kohn Pedersen Fox Associates PC*  
*Otak Inc.*  
*Perkins Eastman*  
*WATG*

### China (P.R.C.)

*AO Architects*  
*Affiliated Engineers Inc.*  
*Arcadis North America/Callison RTKL*  
*Ayers Saint Gross*  
*BRPH Cos. Inc.*  
*Black & Veatch*  
*CHA Consulting Inc. (CHA)*  
*CRB*

## Region Country Company

*Corgan*  
*Cunningham*  
*DLR Group*  
*Day & Zimmermann*  
*Fluor*  
*GBBN*  
*Gensler*  
*GeoEngineers Inc.*  
*Gresham Smith*  
*HDR*  
*HKS*  
*HOK*  
*Haskell*  
*IPS-Integrated Project Services LLC*  
*Integral Group*  
*Jacobs*  
*Jensen Hughes*  
*Kohn Pedersen Fox Associates PC*  
*LEO A DALY*  
*Landrum & Brown Inc.*  
*MBH Architects*  
*McLaren Engineering Group*  
*Moffatt & Nichol*  
*NV5 Global Inc.*  
*Newcomb & Boyd*  
*Page*  
*Perkins Eastman*  
*Perkins&Will*  
*Populous*  
*Rebel Design+Group*  
*Robert A.M. Stern Architects*  
*Ross & Baruzzini Inc.*  
*SB Architects*  
*SSOE Group*  
*Salas O'Brien*  
*Sanborn Head & Associates Inc.*  
*Sargent & Lundy*  
*Sasaki*  
*Simpson Gumpertz & Heger*  
*Skidmore Owings & Merrill*  
*SmithGroup*  
*Steinberg Hart*

# Where the 2022 Top 500 Design Firms Worked

## Region Country Company

*Syska Hennessy Group*  
*T.Y. Lin International*  
*TEECOM*  
*TRC Cos. Inc.*  
*Thornton Tomasetti*  
*Vanderweil Engineers*  
*WATG*  
*WSP USA*  
*Walter P Moore*  
*Ware Malcomb*  
*Wood*  
*ZGF Architects*  
*Zachry Group*

## Diego Garcia

*Arcadis North America/Callison RTKL*  
*BRPH Cos. Inc.*  
*Black & Veatch*  
*Gensler*  
*HOK*  
*NV5 Global Inc.*  
*Perkins Eastman*  
*Populous*  
*Rebel Design+Group*  
*Robert A.M. Stern Architects*  
*WATG*  
*Wiss Janney Elstner Associates*

## Hong Kong (P.R.C.)

*Arcadis North America/Callison RTKL*  
*Ayers Saint Gross*  
*Black & Veatch*  
*Corgan*  
*Day & Zimmermann*  
*Gensler*  
*HKS*  
*HOK*  
*IBI Group Inc.*  
*Jacobs*  
*Kohn Pedersen Fox Associates PC*  
*LEO A DALY*  
*McLaren Engineering Group*  
*Moody Nolan*

## Region Country Company

*Mott MacDonald*  
*NV5 Global Inc.*  
*Parsons Corp.*  
*Perkins Eastman*  
*Populous*  
*Robert A.M. Stern Architects*  
*Skidmore Owings & Merrill*  
*TEECOM*  
*WSP USA*  
*Wunderlich-Malec Engineering Inc.*

## India

*AO Architects*  
*Arcadis North America/Callison RTKL*  
*Bechtel*  
*Black & Veatch*  
*CDM Smith*  
*CHA Consulting Inc. (CHA)*  
*CRB*  
*CannonDesign*  
*Coffman Engineers Inc.*  
*Corgan*  
*DLZ Corp.*  
*Fluor*  
*Gensler*  
*HDR*  
*HKS*  
*HOK*  
*Hanson Professional Services Inc.*  
*IBI Group Inc.*  
*IPS-Integrated Project Services LLC*  
*Jacobs*  
*Jensen Hughes*  
*KPFF Consulting Engineers*  
*Kohn Pedersen Fox Associates PC*  
*LANGAN*  
*Landrum & Brown Inc.*  
*Leidos*  
*MBH Architects*  
*ME Engineers*  
*Magnusson Klemencic Associates*  
*Modjeski and Masters Inc.*



# Where the 2022 Top 500 Design Firms Worked

## Region Country Company

*Moffatt & Nichol*  
*Moody Nolan*  
*NV5 Global Inc.*  
*Page*  
*Perkins Eastman*  
*Perkins&Will*  
*Populous*  
*RSP*  
*Ross & Baruzzini Inc.*  
*S&B Engineers and Constructors Ltd.*  
*SSOE Group*  
*Sargent & Lundy*  
*Sasaki*  
*Skidmore Owings & Merrill*  
*Smith Seckman Reid Inc.*  
*Stanley Consultants*  
*T.Y. Lin International*  
*TEECOM*  
*TRC Cos. Inc.*  
*Thornton Tomasetti*  
*WATG*  
*WSP USA*  
*Walter P Moore*  
*Wiss Janney Elstner Associates*  
*Wood*

## Indonesia

*AO Architects*  
*Arcadis North America/Callison RTKL*  
*Bechtel*  
*Black & Veatch*  
*CDM Smith*  
*Day & Zimmermann*  
*Fluor*  
*Fugro USA*  
*GAI Consultants Inc.*  
*Gensler*  
*HGA*  
*Jacobs*  
*Jensen Hughes*  
*Kohn Pedersen Fox Associates PC*  
*LANGAN*

## Region Country Company

*Landrum & Brown Inc.*  
*MBH Architects*  
*Magnusson Klemencic Associates*  
*Page*  
*SB Architects*  
*Sargent & Lundy*  
*Sasaki*  
*Skidmore Owings & Merrill*  
*T.Y. Lin International*  
*TEECOM*  
*Thornton Tomasetti*  
*WATG*  
*WSP USA*  
*Waldemar S. Nelson and Co. Inc.*

## Japan

*AHL*  
*AO Architects*  
*Arcadis North America/Callison RTKL*  
*Bechtel*  
*Black & Veatch*  
*Burns & McDonnell*  
*CHA Consulting Inc. (CHA)*  
*CRB*  
*Coffman Engineers Inc.*  
*Corgan*  
*Cushing Terrell*  
*Dewberry*  
*EXP*  
*Elkus Manfredi Architects*  
*Fluor*  
*Gensler*  
*GeoEngineers Inc.*  
*HDR*  
*HKS*  
*HOK*  
*Jacobs*  
*Jensen Hughes*  
*KPF Consulting Engineers*  
*KZF Design*  
*Kohn Pedersen Fox Associates PC*  
*Landrum & Brown Inc.*

# Where the 2022 Top 500 Design Firms Worked

## Region Country Company

*MBH Architects*  
*Merrick & Co.*  
*Michael Baker International*  
*Moffatt & Nichol*  
*Newcomb & Boyd*  
*Northeast-Western Energy Systems*  
*Parkhill*  
*Parsons Corp.*  
*Perkins Eastman*  
*Perkins&Will*  
*Pond*  
*Populous*  
*RCM Technologies Inc.*  
*Rebel Design+Group*  
*Robert A.M. Stern Architects*  
*Simpson Gumpertz & Heger*  
*Skidmore Owings & Merrill*  
*Smith Seckman Reid Inc.*  
*Stanley Consultants*  
*TEECOM*  
*TLC Engineering Solutions Inc.*  
*Thornton Tomasetti*  
*WATG*  
*WSP USA*  
*Wiss Janney Elstner Associates*  
*Wood*  
*Woolpert Inc.*  
*ZGF Architects*  
*Zachry Group*

## Kazakhstan

*Arcadis North America/Callison RTKL*  
*Bechtel*  
*Fluor*  
*Gensler*  
*HGA*  
*HOK*  
*Jensen Hughes*  
*LANGAN*  
*Martin/Martin Inc.*  
*Perkins Eastman*  
*Perkins&Will*

## Region Country Company

*Robert A.M. Stern Architects*  
*Skidmore Owings & Merrill*  
*Tetra Tech Inc.*  
*Thornton Tomasetti*  
*WSP USA*

## Korea, South

*AO Architects*  
*Affiliated Engineers Inc.*  
*Arcadis North America/Callison RTKL*  
*Black & Veatch*  
*Burns & McDonnell*  
*CHA Consulting Inc. (CHA)*  
*CRB*  
*Coffman Engineers Inc.*  
*Collins Engineers Inc.*  
*Cushing Terrell*  
*Day & Zimmermann*  
*EXP*  
*Fluor*  
*Gensler*  
*Geosyntec Consultants*  
*HDR*  
*HEAPY*  
*HKS*  
*Jacobs*  
*Jensen Hughes*  
*KPF Consulting Engineers*  
*KZF Design*  
*Kohn Pedersen Fox Associates PC*  
*MBH Architects*  
*Michael Baker International*  
*Mott MacDonald*  
*Parsons Corp.*  
*Perkins&Will*  
*Pond*  
*Robert A.M. Stern Architects*  
*STUDIOS architecture*  
*Sargent & Lundy*  
*Simpson Gumpertz & Heger*  
*Skidmore Owings & Merrill*  
*SmithGroup*

# Where the 2022 Top 500 Design Firms Worked

## Region Country Company

*Stanley Consultants*  
*Thornton Tomasetti*  
*WATG*  
*Wiss Janney Elstner Associates*  
*ZGF Architects*  
*Zachry Group*

## Kyrgyzstan

*HOK*

## Laos

*Black & Veatch*  
*Otak Inc.*  
*Perkins Eastman*

## Malaysia

*AO Architects*  
*Arcadis North America/Callison RTKL*  
*Black & Veatch*  
*Corgan*  
*Fluor*  
*Gensler*  
*Geosyntec Consultants*  
*HDR*  
*HOK*  
*Haskell*  
*Jacobs*  
*Jensen Hughes*  
*Kohn Pedersen Fox Associates PC*  
*LANGAN*  
*Landrum & Brown Inc.*  
*MBH Architects*  
*Moody Nolan*  
*NV5 Global Inc.*  
*Newcomb & Boyd*  
*Perkins Eastman*  
*Sargent & Lundy*  
*Sasaki*  
*Skidmore Owings & Merrill*  
*T.Y. Lin International*  
*TRC Cos. Inc.*  
*Thornton Tomasetti*  
*WATG*

## Region Country Company

*WSP USA*  
*Wood*

## Mongolia

*Black & Veatch*  
*Jensen Hughes*  
*Perkins&Will*  
*Sargent & Lundy*  
*Wiss Janney Elstner Associates*

## Myanmar (Burma)

*HOK*  
*LANGAN*  
*Thornton Tomasetti*

## Nepal

*CDM Smith*  
*Jensen Hughes*  
*LANGAN*  
*Magnusson Klemencic Associates*  
*Otak Inc.*  
*Simpson Gumpertz & Heger*

## Philippines

*AO Architects*  
*Arcadis North America/Callison RTKL*  
*Black & Veatch*  
*Burns & McDonnell*  
*Fluor*  
*Gensler*  
*Ghafari Associates LLC*  
*HOK*  
*Haskell*  
*Jacobs*  
*Jensen Hughes*  
*KPF Consulting Engineers*  
*LANGAN*  
*Landrum & Brown Inc.*  
*Leidos*  
*Magnusson Klemencic Associates*  
*Moffatt & Nichol*  
*Populous*  
*Ross & Baruzzini Inc.*

# Where the 2022 Top 500 Design Firms Worked

## Region Country Company

*SB Architects*  
*Sargent & Lundy*  
*Simpson Gumpertz & Heger*  
*Skidmore Owings & Merrill*  
*SmithGroup*  
*Stanley Consultants*  
*Syska Hennessy Group*  
*T.Y. Lin International*  
*TRC Cos. Inc.*  
*Thornton Tomasetti*  
*WATG*  
*WSP USA*  
*Wiss Janney Elstner Associates*

## Singapore

*Arcadis North America/Callison RTKL*  
*Black & Veatch*  
*Burns & McDonnell*  
*Coffman Engineers Inc.*  
*Fugro USA*  
*Gensler*  
*HDR*  
*HKS*  
*HOK*  
*Haskell*  
*IPS-Integrated Project Services LLC*  
*Jacobs*  
*Jensen Hughes*  
*Kahler Slater*  
*Kimley-Horn*  
*Kohn Pedersen Fox Associates PC*  
*Landrum & Brown Inc.*  
*MBH Architects*  
*McLaren Engineering Group*  
*Merrick & Co.*  
*Moffatt & Nichol*  
*Moody Nolan*  
*Mott MacDonald*  
*NV5 Global Inc.*  
*Parsons Corp.*  
*Perkins Eastman*  
*Perkins&Will*

## Region Country Company

*Populous*  
*Skidmore Owings & Merrill*  
*T.Y. Lin International*  
*TRC Cos. Inc.*  
*Terracon Consultants Inc.*  
*Thornton Tomasetti*  
*Vanderweil Engineers*  
*WATG*  
*WSP USA*  
*Waldemar S. Nelson and Co. Inc.*  
*Wood*  
*Worley*

## Sri Lanka

*Arcadis North America/Callison RTKL*  
*Black & Veatch*  
*CHA Consulting Inc. (CHA)*  
*Coffman Engineers Inc.*  
*Gensler*  
*Hanson Professional Services Inc.*  
*Jacobs*  
*Jensen Hughes*  
*LANGAN*  
*Perkins Eastman*  
*Skidmore Owings & Merrill*  
*WATG*  
*ZGF Architects*

## Taiwan (R.O.C)

*Affiliated Engineers Inc.*  
*Arcadis North America/Callison RTKL*  
*Bechtel*  
*Black & Veatch*  
*Burns & McDonnell*  
*Gensler*  
*HOK*  
*Jacobs*  
*Jensen Hughes*  
*Kohn Pedersen Fox Associates PC*  
*Landrum & Brown Inc.*  
*MBH Architects*  
*Merrick & Co.*  
*Newcomb & Boyd*

# Where the 2022 Top 500 Design Firms Worked

## Region Country Company

*Page*

*Parsons Corp.*

*Skidmore Owings & Merrill*

*Stanley Consultants*

*T.Y. Lin International*

*WATG*

*WSP USA*

*Wood*

## Tajikistan

*Sasaki*

## Thailand

*AO Architects*

*BRPH Cos. Inc.*

*Bechtel*

*Black & Veatch*

*CHA Consulting Inc. (CHA)*

*Fluor*

*Gensler*

*HOK*

*Hart Howerton*

*Jacobs*

*Jensen Hughes*

*KPF Consulting Engineers*

*Kohn Pedersen Fox Associates PC*

*LANGAN*

*Leidos*

*MBH Architects*

*Moffatt & Nichol*

*Moody Nolan*

*Page*

*Perkins Eastman*

*Populous*

*Rebel Design+Group*

*Simpson Gumpertz & Heger*

*Skidmore Owings & Merrill*

*Stanley Consultants*

*TRC Cos. Inc.*

*Thornton Tomasetti*

*WATG*

## Region Country Company

### Uzbekistan

*Bechtel*

*Black & Veatch*

*Day & Zimmermann*

*Fluor*

*Jensen Hughes*

*Otak Inc.*

*Sargent & Lundy*

### Vietnam

*Arcadis North America/Callison RTKL*

*Bechtel*

*Black & Veatch*

*CDM Smith*

*Cardno Inc.*

*Day & Zimmermann*

*EYP Architecture & Engineering*

*Gensler*

*HOK*

*Jensen Hughes*

*KPF Consulting Engineers*

*Kohn Pedersen Fox Associates PC*

*LANGAN*

*MBH Architects*

*Moffatt & Nichol*

*Page*

*Perkins Eastman*

*SB Architects*

*Sasaki*

*Skidmore Owings & Merrill*

*T.Y. Lin International*

*TRC Cos. Inc.*

*Thornton Tomasetti*

*WATG*

## G. AUSTRALIA/OCEANIA

### Australia

*Arcadis North America/Callison RTKL*

*BRPH Cos. Inc.*

*Bechtel*

## Where the 2022 Top 500 Design Firms Worked

### Region Country Company

*Black & Veatch*  
*CDM Smith*  
*CRB*  
*Cardno Inc.*  
*Coffman Engineers Inc.*  
*Corgan*  
*Flad Architects*  
*Fluor*  
*Fugro USA*  
*GEI Consultants Inc.*  
*Gensler*  
*Geosyntec Consultants*  
*HDR*  
*HKS*  
*HOK*  
*Hazen and Sawyer*  
*Integral Group*  
*Jacobs*  
*Jensen Hughes*  
*KPFF Consulting Engineers*  
*Kimley-Horn*  
*Kleinfelder*  
*Kohn Pedersen Fox Associates PC*  
*Landrum & Brown Inc.*  
*Moffatt & Nichol*  
*Mott MacDonald*  
*Newcomb & Boyd*  
*Perkins Eastman*  
*Perkins&Will*  
*Populous*  
*Rebel Design+Group*  
*SSOE Group*  
*STUDIOS architecture*  
*Simpson Gumpertz & Heger*  
*Skidmore Owings & Merrill*  
*Syska Hennessy Group*  
*TEECOM*  
*TLC Engineering Solutions Inc.*  
*TRC Cos. Inc.*  
*Tetra Tech Inc.*  
*Thornton Tomasetti*  
*WSP USA*

### Region Country Company

*Wiss Janney Elstner Associates*  
*Wood*  
*Woolpert Inc.*  
*Worley*  
*ZGF Architects*

### New Zealand

*Black & Veatch*  
*Fugro USA*  
*Gensler*  
*Geosyntec Consultants*  
*HDR*  
*Integral Group*  
*Jacobs*  
*Jensen Hughes*  
*KPFF Consulting Engineers*  
*Magnusson Klemencic Associates*  
*Merrick & Co.*  
*Mott MacDonald*  
*Populous*  
*Simpson Gumpertz & Heger*  
*TRC Cos. Inc.*  
*Terracon Consultants Inc.*  
*Tetra Tech Inc.*  
*Thornton Tomasetti*  
*WSP USA*  
*Walter P Moore*  
*Woolpert Inc.*

### Pacific Islands

*BRPH Cos. Inc.*  
*Black & Veatch*  
*CTL/Thompson Inc.*  
*Clark Nexsen*  
*Coffman Engineers Inc.*  
*Gensler*  
*Geosyntec Consultants*  
*Group 70 International Inc. dba G70*  
*Jensen Hughes*  
*Kleinfelder*  
*Landrum & Brown Inc.*  
*Martin/Martin Inc.*  
*Otak Inc.*



# Where the 2022 Top 500 Design Firms Worked

## Region Country Company

*Parsons Corp.*  
*The Vertex Cos. Inc.*  
*WATG*  
*Wiss Janney Elstner Associates*  
*Woolpert Inc.*

## Papua New Guinea

*Burns & McDonnell*  
*Day & Zimmermann*  
*Jensen Hughes*  
*Magnusson Klemencic Associates*  
*Otak Inc.*  
*Thornton Tomasetti*

## H. NORTH AFRICA

### Algeria

*Arcadis North America/Callison RTKL*  
*HOK*  
*Perkins Eastman*

### Egypt

*Ayers Saint Gross*  
*Bechtel*  
*Black & Veatch*  
*Burns & McDonnell*  
*CDM Smith*  
*Fluor*  
*Gensler*  
*HKS*  
*HOK*  
*Jacobs*  
*Jensen Hughes*  
*LANGAN*  
*Magnusson Klemencic Associates*  
*NORR*  
*Parsons Corp.*  
*Perkins Eastman*  
*Perkins&Will*  
*SB Architects*  
*Sargent & Lundy*  
*Sasaki*

## Region Country Company

*Simpson Gumpertz & Heger*  
*Skidmore Owings & Merrill*  
*SmithGroup*  
*T.Y. Lin International*  
*Thornton Tomasetti*  
*WATG*  
*Walker Consultants*  
*Wood*

## Ethiopia

*Arcadis North America/Callison RTKL*  
*Black & Veatch*  
*HDR*  
*Jensen Hughes*  
*Sasaki*  
*T.Y. Lin International*

## Libya

*Perkins Eastman*

## Morocco

*Arcadis North America/Callison RTKL*  
*Barr Engineering Co.*  
*Black & Veatch*  
*Day & Zimmermann*  
*Gensler*  
*HKS*  
*IPS-Integrated Project Services LLC*  
*Jacobs*  
*Jensen Hughes*  
*LANGAN*  
*Magnusson Klemencic Associates*  
*Moffatt & Nichol*  
*Perkins Eastman*  
*Rebel Design+Group*  
*STUDIOS architecture*  
*Sargent & Lundy*  
*Tetra Tech Inc.*  
*Thornton Tomasetti*  
*WATG*  
*Wiss Janney Elstner Associates*  
*Worley*

# Where the 2022 Top 500 Design Firms Worked

## Region Country Company

### Niger

*CHA Consulting Inc. (CHA)*  
*Corgan*  
*Day & Zimmermann*  
*Day & Zimmermann*  
*EN Engineering LLC*  
*EYP Architecture & Engineering*  
*Gensler*  
*GeoEngineers Inc.*  
*HOK*  
*Jensen Hughes*  
*KPF Consulting Engineers*  
*LANGAN*  
*Moffatt & Nichol*  
*Page*  
*Perkins Eastman*  
*Perkins&Will*  
*SmithGroup*  
*T.Y. Lin International*  
*T.Y. Lin International*  
*TRC Cos. Inc.*  
*Thornton Tomasetti*  
*WSP USA*  
*Walter P Moore*  
*Wiss Janney Elstner Associates*  
*Woolpert Inc.*

### Sub Sahara

*Barr Engineering Co.*  
*Clark Nexsen*  
*Day & Zimmermann*  
*HGA*  
*Jensen Hughes*  
*KPF Consulting Engineers*  
*Page*  
*Perkins&Will*  
*T.Y. Lin International*  
*Terracon Consultants Inc.*  
*Thornton Tomasetti*

### Sudan

*LEO A DALY*

## Region Country Company

*Magnusson Klemencic Associates*  
*Thornton Tomasetti*

### Tunisia

*Gensler*  
*Jensen Hughes*  
*KPF Consulting Engineers*  
*LANGAN*  
*Sargent & Lundy*  
*WATG*

## I. CENTRAL AND SOUTHERN AFRICA

### Angola

*Bechtel*  
*Flad Architects*  
*Perkins&Will*  
*T.Y. Lin International*  
*Wiss Janney Elstner Associates*  
*Wood*

### Benin

*WATG*

### Botswana

*Black & Veatch*  
*Fluor*  
*Jensen Hughes*

### Burkina Faso

*Fluor*  
*LANGAN*  
*Page*  
*Thornton Tomasetti*

### Cameroon

*Arcadis North America/Callison RTKL*  
*Black & Veatch*  
*HKS*  
*Jensen Hughes*  
*Page*

# Where the 2022 Top 500 Design Firms Worked

## Region Country Company

*Sargent & Lundy*  
*Waldemar S. Nelson and Co. Inc.*

## Cape Verde Islands

*Jensen Hughes*

## Congo

*CHA Consulting Inc. (CHA)*  
*Coffman Engineers Inc.*  
*Day & Zimmermann*  
*Jensen Hughes*  
*LANGAN*  
*Thornton Tomasetti*  
*Wiss Janney Elstner Associates*

## D.R. Congo (Zaire)

*Page*  
*Thornton Tomasetti*

## Gabon

*Bechtel*  
*HDR*

## Ghana

*Gensler*  
*Ghafari Associates LLC*  
*Jensen Hughes*  
*Mott MacDonald*  
*Terracon Consultants Inc.*

## Guinea

*Fluor*  
*KPF Consulting Engineers*  
*Sargent & Lundy*  
*Waldemar S. Nelson and Co. Inc.*

## Ivory Coast

*Jensen Hughes*  
*NORR*

## Kenya

*Black & Veatch*  
*CHA Consulting Inc. (CHA)*

## Region Country Company

*COWI North America*  
*Day & Zimmermann*  
*Jensen Hughes*  
*LANGAN*  
*Merrick & Co.*  
*Robert A.M. Stern Architects*  
*Thornton Tomasetti*  
*Vanderweil Engineers*

## Lesotho

*CDM Smith*

## Liberia

*Geo-Logic Associates Inc.*  
*Moffatt & Nichol*

## Malawi

*Day & Zimmermann*  
*Magnusson Klemencic Associates*  
*Page*

## Mozambique

*CHA Consulting Inc. (CHA)*  
*Fluor*  
*Geosyntec Consultants*  
*HDR*  
*HOK*  
*Jensen Hughes*  
*KPF Consulting Engineers*  
*Moffatt & Nichol*  
*Page*  
*Perkins&Will*  
*TRC Cos. Inc.*

## Rwanda

*Black & Veatch*  
*Ghafari Associates LLC*  
*Jensen Hughes*  
*Landrum & Brown Inc.*  
*Ross & Baruzzini Inc.*  
*T.Y. Lin International*

# Where the 2022 Top 500 Design Firms Worked

## Region Country Company

### Senegal

*AO Architects*  
*Black & Veatch*  
*Jensen Hughes*  
*Perkins Eastman*  
*Sargent & Lundy*

### Sierra Leone

*KPFF Consulting Engineers*  
*Wiss Janney Elstner Associates*

### South Africa

*Arcadis North America/Callison RTKL*  
*Black & Veatch*  
*Burns & McDonnell*  
*CDM Smith*  
*Fluor*  
*Gensler*  
*Geosyntec Consultants*  
*HDR*  
*HOK*  
*Haskell*  
*Jacobs*  
*Jensen Hughes*  
*KPFF Consulting Engineers*  
*LANGAN*  
*MBH Architects*  
*Sargent & Lundy*  
*TRC Cos. Inc.*  
*WSP USA*  
*Wiss Janney Elstner Associates*  
*Wood*  
*Woolpert Inc.*

### Tanzania

*Bechtel*  
*CDM Smith*  
*CHA Consulting Inc. (CHA)*  
*HOK*  
*Perkins Eastman*  
*T.Y. Lin International*

## Region Country Company

### Uganda

*Black & Veatch*  
*Jensen Hughes*  
*KPFF Consulting Engineers*  
*Perkins Eastman*  
*Ross & Baruzzini Inc.*  
*Wiss Janney Elstner Associates*

### Zambia

*Day & Zimmermann*  
*Fluor*  
*Jensen Hughes*  
*WSP USA*

### Zimbabwe

*Gensler*  
*LANGAN*  
*Page*  
*TLC Engineering Solutions Inc.*

## J. ANTARCTIC/ARCTIC

### Antarctic/Artic

*Coffman Engineers Inc.*  
*GeoEngineers Inc.*  
*HDR*  
*Leidos*  
*Martin/Martin Inc.*  
*Merrick & Co.*  
*NORR*  
*R&M Consultants Inc.*  
*Ross & Baruzzini Inc.*  
*Simpson Gumpertz & Heger*